

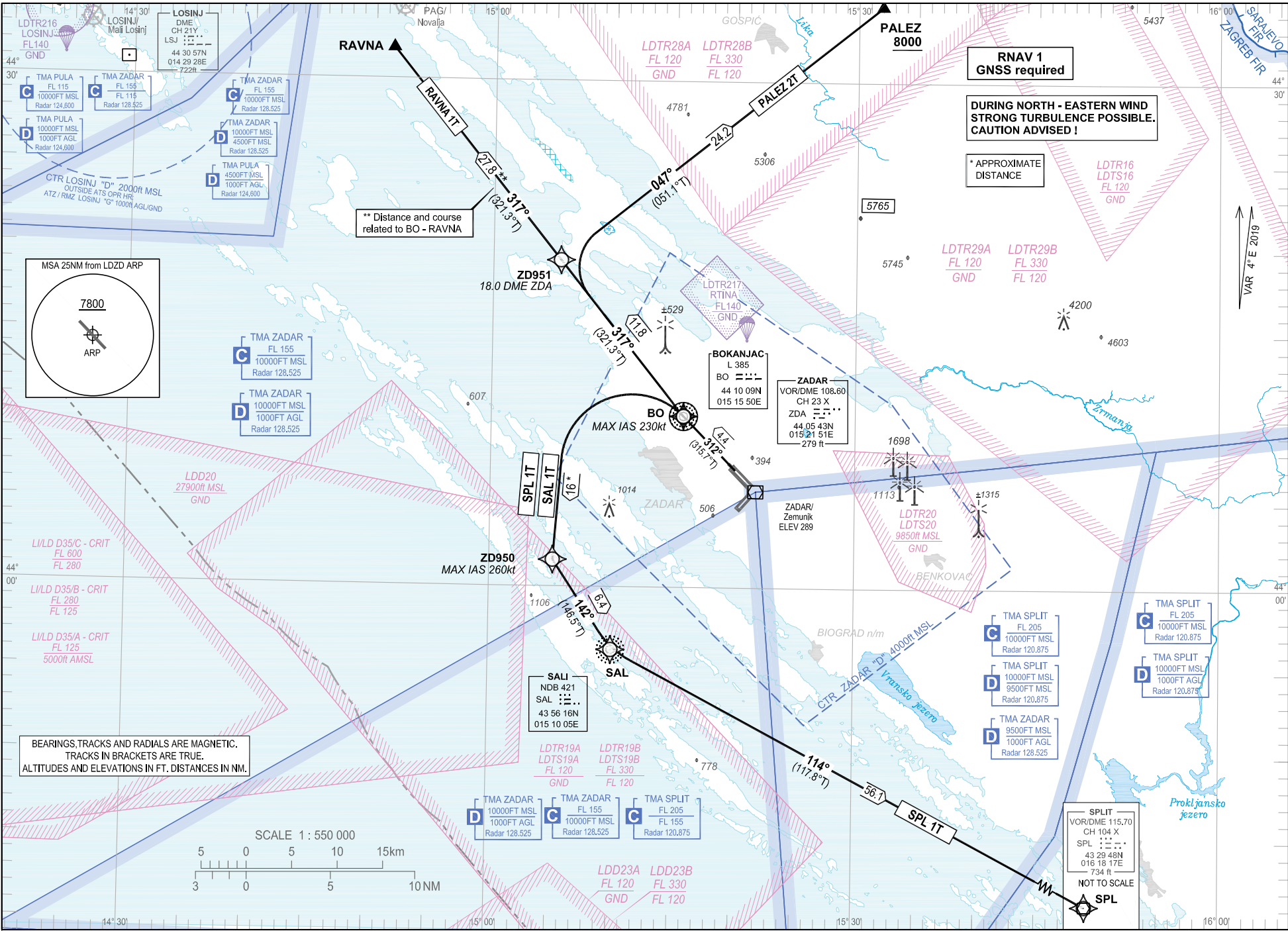
STANDARD DEPARTURE CHART  
INSTRUMENT (SID) - ICAO

TRANSITION ALTITUDE  
10 000

ZADAR TOWER 123 700  
ZADAR DELIVERY 132 975  
ZADAR RADAR 128 525

ZADAR / Zemunik (LDZD)  
RNAV 1T PALEZ 2T SPL 1T SAL 1T RNAV Rwy 31

CHANGE: TMA classification vertical limits; Parachuting zones added; PBN box updated; Editorial.



## ZADAR / Zemunik (LDZD)

RNAV RWY 31 RAVNA 1T PALEZ 2T SPL 1T SAL 1T

## GENERAL INFORMATION AND REQUIREMENTS FOR ALL SIDs

- Calculation of the SIDs is based on an all-engines operative minimum net climb gradient of 3.3 per cent (201 ft/NM). Where a greater climb gradient for a specific SID (or part of SID) is necessary, this is indicated in the tabular description of the route.

- After take-off climb initially 8000 ft and contact Zadar Radar on 128.525 MHz.

**WARNING: Back-up conventional (NON-RNAV) procedure, in case of loss of RNAV 1 capability or RNAV system failure, below minimum radar vectoring altitude for RNAV SID RAVNA 1T only:**

Climb straight ahead to BO L. At BO L proceed on bearing QDR 317° BO to RAVNA. On passing 6000 ft AMSL proceed via RNAV SID RAVNA 1T or according to ATC instruction.

**LDZD RNAV STANDARD INSTRUMENT DEPARTURE RWY 31**

## Proposed tabular description for navigation database coding

Serial number	Route	Path descriptor	Waypoint name	Flyover	Course °M (°T)	Magnetic variation	Distance (NM)	Turn direction	Altitude (ft)	Speed (kt)	Remarks	NAV SPEC
010	RAVNA 1T	CF	BO	Y	312° (315.7°T)	4°E	4.4	-	-	-	-	RNAV 1
020		TF	RAVNA	-	317° (321.3°T)	4°E	27.8	-	-	-		

**WARNING: Back-up conventional (NON-RNAV) procedure, in case of loss of RNAV 1 capability or RNAV system failure, below minimum radar vectoring altitude for RNAV SID PALEZ 2T only:**

Climb straight ahead to BO L. MAX IAS 230 kt. At BO L proceed on bearing QDR 317° BO to 18.0 DME ZDA. At 18.0 DME ZDA turn RIGHT on track 047° to PALEZ. On passing 7800 ft AMSL proceed via RNAV SID PALEZ 2T or according to ATC instruction. MNM PDG 6.1% (371 ft/NM) to 7800 ft AMSL. Cross PALEZ at or above 8000 ft AMSL.

**LDZD RNAV STANDARD INSTRUMENT DEPARTURE RWY 31**

## Proposed tabular description for navigation database coding

Serial number	Route	Path descriptor	Waypoint name	Flyover	Course °M (°T)	Magnetic variation	Distance (NM)	Turn direction	Altitude (ft)	Speed (kt)	Remarks	NAV SPEC
010	PALEZ 2T	CF	BO	Y	312° (315.7°T)	4°E	4.4	-	-	-230	MNM PDG 6.1% (371 ft/NM) to 7800 ft AMSL	RNAV 1
020		TF	ZD951	-	317° (321.3°T)	4°E	11.8	-	-	-		
030		TF	PALEZ	-	047° (051.1°T)	4°E	24.2	-	+8000	-		

**WARNING: Back-up conventional (NON-RNAV) procedure, in case of loss of RNAV 1 capability or RNAV system failure, below minimum radar vectoring altitude for RNAV SID SPL 1T only:**

Climb straight ahead to BO L. MAX IAS 230 kt. At BO L turn LEFT climbing direct to SAL NDB. MAX IAS 260 kt. After crossing SAL NDB, proceed via RNAV SID SPL 1T or according to ATC instruction.

**LDZD RNAV STANDARD INSTRUMENT DEPARTURE RWY 31**

## Proposed tabular description for navigation database coding

Serial number	Route	Path descriptor	Waypoint name	Flyover	Course °M (°T)	Magnetic variation	Distance (NM)	Turn direction	Altitude (ft)	Speed (kt)	Remarks	NAV SPEC
010	SPL 1T	CF	BO	Y	312° (315.7°T)	4°E	4.4	-	-	-230	-	RNAV 1
020		DF	ZD950	-	-	4°E	-	L	-	-260		
030		TF	SAL	-	142° (146.5°T)	4°E	6.4	-	-	-		
040		TF	SPL	-	114° (117.8°T)	4°E	56.1	-	-	-		

CHANGE: TMA's classification vertical limits; Parachuting zones added; PBN box updated; Editorial.

**WARNING: Back-up conventional (NON-RNAV) procedure, in case of loss of RNAV 1 capability or RNAV system failure, below minimum radar vectoring altitude for RNAV SID SAL 1T only:**  
Climb straight ahead to BO L. MAX IAS 230 kt. At BO L turn LEFT climbing direct to SAL NDB. MAX IAS 260 kt.

**LDZD RNAV STANDARD INSTRUMENT DEPARTURE RWY 31**

Proposed tabular description for navigation database coding

Serial number	Route	Path descriptor	Waypoint name	Flyover	Course °M (°T)	Magnetic variation	Distance (NM)	Turn direction	Altitude (ft)	Speed (kt)	Remarks	NAV SPEC
010	SAL 1T	CF	BO	Y	312° (315.7°T)	4°E	4.4	-	-	-230	-	RNAV 1
020		DF	ZD950	-	-	4°E	-	L	-	-260		
030		TF	SAL	-	142° (146.5°T)	4°E	6.4	-	-	-		

Waypoint coordinates

Waypoint name	WGS-84 latitude	WGS-84 longitude
BO	441009.29N	0151550.41E
SAL	435616.30N	0151005.20E
SPL	432947.69N	0161817.00E
RAVNA	443149N	0145130E
PALEZ	443430N	0153159E
ZD950	440134.5N	0150513.7E
ZD951	441920.2N	0150534.2E

CHANGE: TMAs classification vertical limits; Parachuting zones added; PBN box updated; Editorial.

OVA STRANICA JE NAMJERNO OSTAVLJENA PRAZNA  
THIS PAGE INTENTIONALLY LEFT BLANK