

LOM UI <b>293</b>	APP CRS <b>038°</b>	Rwy Idg TDZE Apt Elev	<b>7098</b> <b>763</b> <b>768</b>
----------------------	------------------------	-----------------------------	---

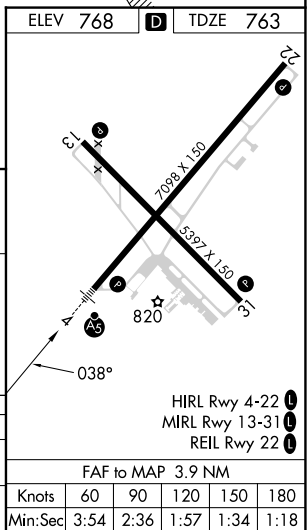
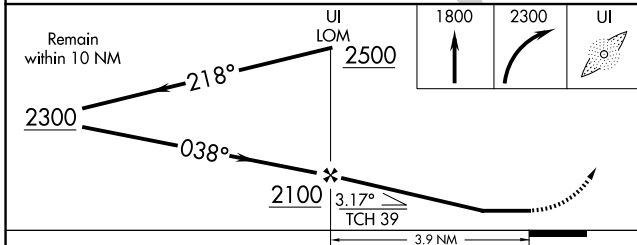
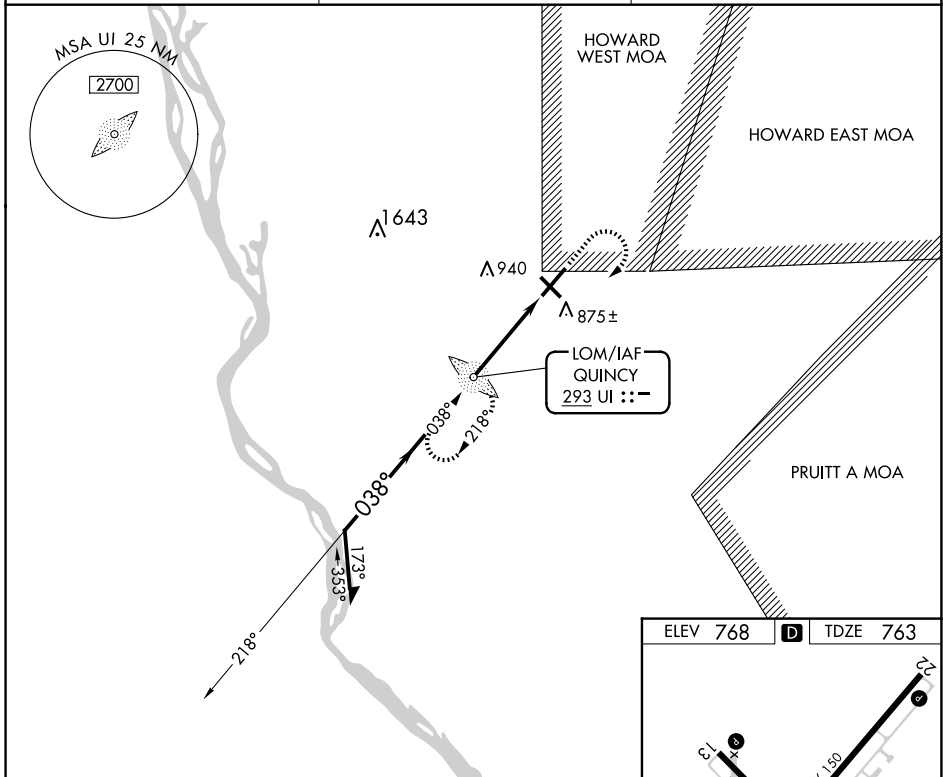
# NDB RWY 4

QUINCY RGNL-BALDWIN FLD (UIN)

**NA** For inop ALS, increase S-04 Cat A and B visibility to 1 SM and Cat C and D visibility to 1 1/2 SM. When local altimeter setting not received, use Pittsfield altimeter setting and increase all MDAs 80 feet and S-04 visibility Cat C/D 1/4 SM. For inop ALS when local altimeter setting not received increase S-04 Cat A/B visibility to 1 SM and Cat C/D visibility to 1 1/2 SM.

**MALSR** MISSED APPROACH: Climb to 1800 then climbing right turn to 2300 direct UI LOM and hold.

ASOS <b>121.425</b>	KANSAS CITY CENTER <b>126.225 317.775</b>	UNICOM <b>123.0</b> (CTAF)
------------------------	--	-------------------------------



CATEGORY	A	B	C	D
S-4		1180-3/4	417 (500-3/4)	
CIRCLING	1180-1 412 (500-1)	1220-1 452 (500-1)	1240-1 1/2 472 (500-1 1/2)	1320-2 552 (600-2)

EC-3, 20 MAR 2025 to 17 APR 2025

EC-3, 20 MAR 2025 to 17 APR 2025