

VORTAC ACT 115.3 Chan 100	APP CRS 141°	Rwy Idg 5103 TDZE 513 Apt Elev 516
---	------------------------	---

VOR RWY 14

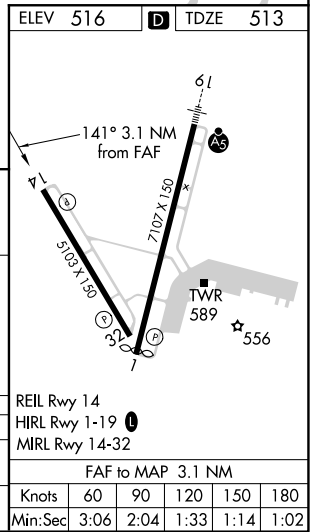
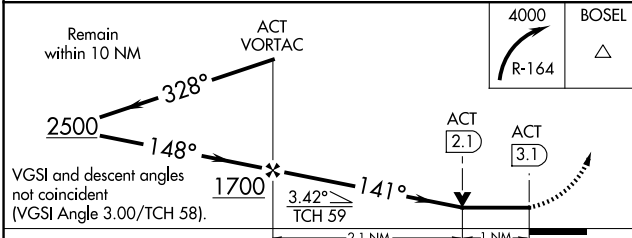
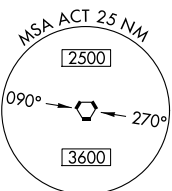
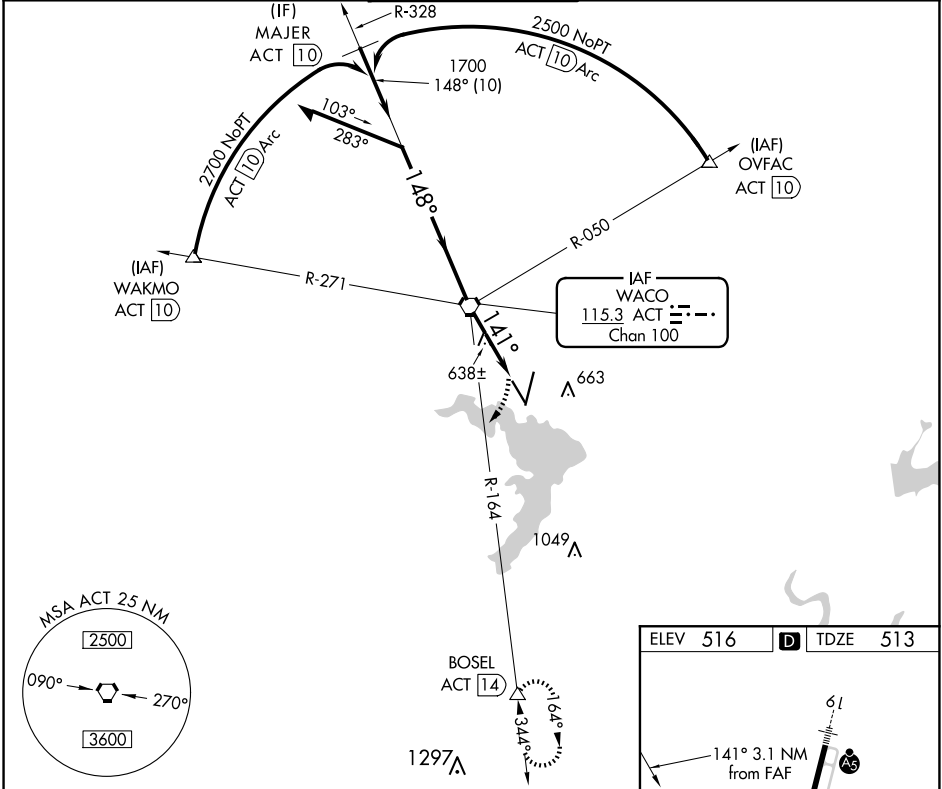
WACO RGNL (ACT)

DME required.

ASR Rwy 14 helicopter visibility reduction below 3/4 SM NA. VDP NA with Mc Gregor Exec altimeter setting. When local altimeter setting not received, use Mc Gregor Exec altimeter setting and increase all MDAs 40 feet; and increase S-14 Cat C/D visibility 1/2 SM and Circling Cat D visibility 1/4 SM.

MISSED APPROACH: Climbing right turn to 4000 on ACT VORTAC R-164 to BOSEL/ACT 14.00 DME and hold, Continue climb-in-hold to 4000.

ATIS 123.85	WACO APP CON * 127.65 227.125	WACO TOWER * 119.3(CTAF) 257.8	GND CON 121.9	UNICOM 122.95
-----------------------	---	--	-------------------------	-------------------------



CATEGORY	A	B	C	D
S-14	900-1	387 (400-1)	900-1 1/2	387 (400-1 1/2)
CIRCLING	940-1 424 (500-1)	980-1 464 (500-1)	1020-1 1/2 504 (600-1 1/2)	1160-2 644 (700-2)

SC-3, 20 MAR 2025 to 17 APR 2025

SC-3, 20 MAR 2025 to 17 APR 2025