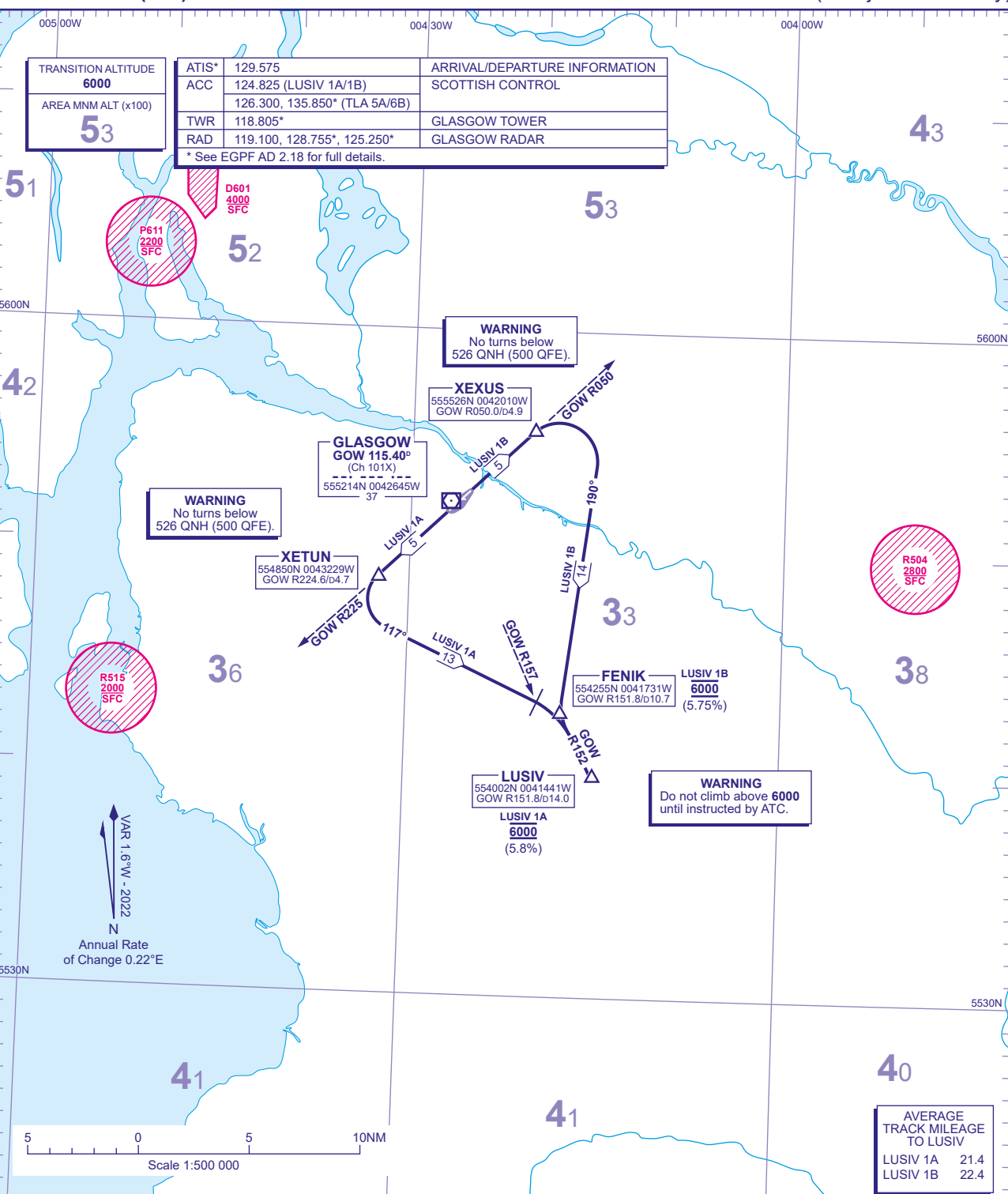


STANDARD CHART - INSTRUMENT (SID) - ICAO

DISTANCES IN NAUTICAL MILES
BEARINGS, TRACKS AND RADIALS ARE MAGNETIC
ALTITUDES AND ELEVATIONS ARE IN FEET

GLASGOW LUSIV (Non-jet aircraft only)

TRANSITION ALTITUDE 6000	ATIS* 129.575	ARRIVAL/DEPARTURE INFORMATION
AREA MNM ALT (x100) 53	ACC 124.825 (LUSIV 1A/1B) 126.300, 135.850* (TLA 5A/6B)	SCOTTISH CONTROL
	TWR 118.805*	GLASGOW TOWER
	RAD 119.100, 128.755*, 125.250*	GLASGOW RADAR
* See EGPF AD 2.18 for full details.		



LUSIV 1A RWY 23	Climb straight ahead to intercept GOW VOR R225 . At GOW D4.7 (XETUN) turn left onto track 117° towards FENIK . At GOW VOR R157 turn right towards LUSIV , crossing LUSIV at 6000 .	L612.
LUSIV 1B RWY 05	Climb straight ahead to intercept GOW VOR R050 . At GOW D4.9 (XEXUS) turn right onto track 190° towards FENIK at 6000 to intercept GOW VOR R152 towards LUSIV .	

OBSTACLE CLEARANCE - RWY 05: Maintain minimum 4.5% climb to **300**. **RWY 23:** Maintain minimum 3.8% climb to **1200**.

GENERAL INFORMATION

- SIDs reflect Noise Abatement Procedures. See EGPF AD 2.21 for Noise Abatement Procedures.
- Climb gradients greater than 3.3% are required for obstacle clearance purposes, as indicated. In addition climb gradients greater than those necessary for obstacle clearance are required for ATC and airspace requirements as indicated.
- En-route cruising levels will be issued after take-off by 'Scottish Control'. Report callsign, SID designator, current altitude and cleared altitude on first contact with 'Scottish Control'.
- Maximum 250KIAS below FL100 unless otherwise authorised.

CHANGE (7/23): VOR GOW RECALIBRATED. RADIALS.