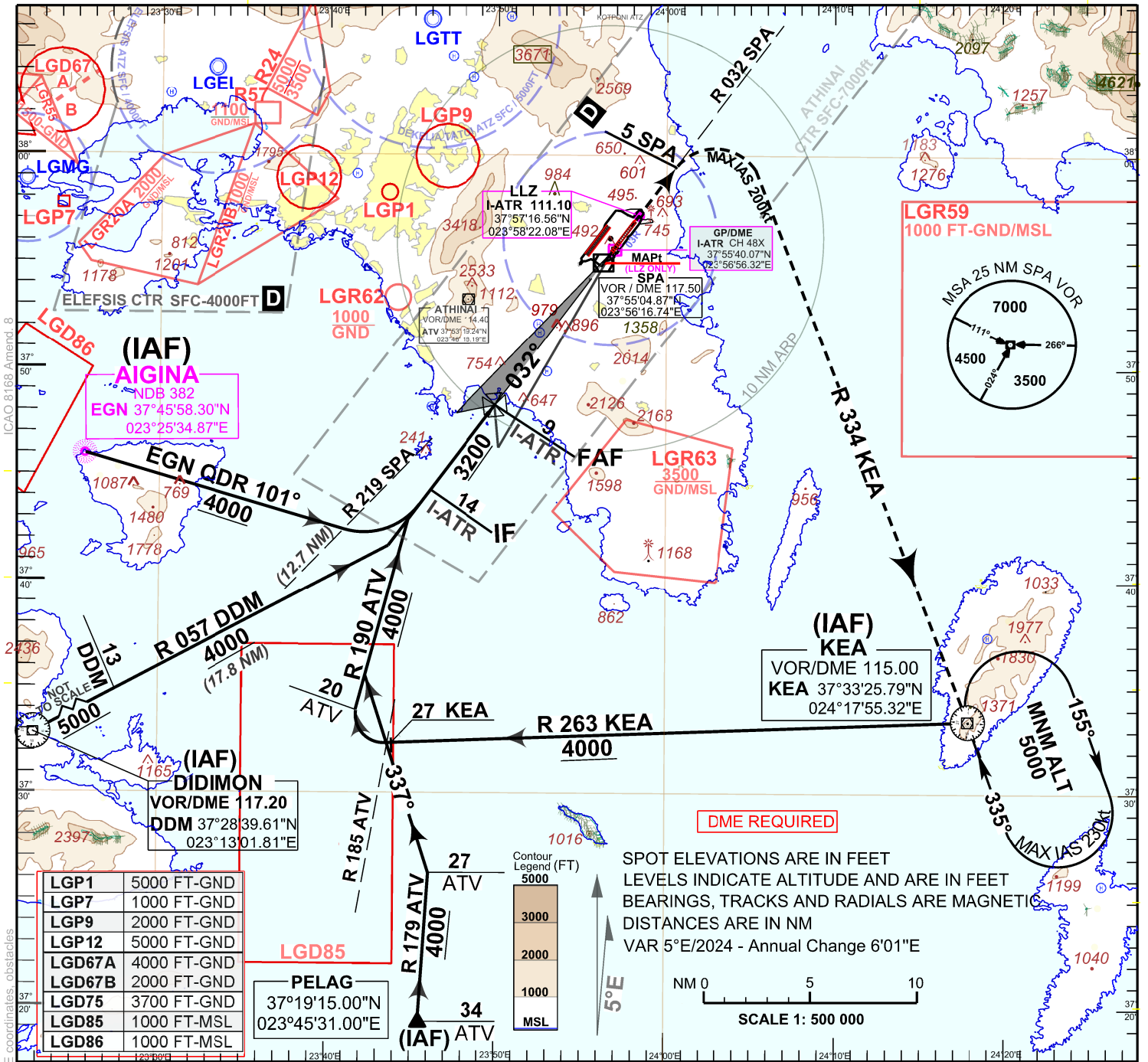


AERODROME ELEV 308 FT
THR RWY 03R ELEV 271 FT

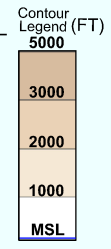
ATIS	ARRIVAL WEST 132.975	TOWER WEST 136.275
136.125	ARRIVAL EAST 126.575	TOWER EAST 118.625

ILS Z or LOC Z
RWY 03R

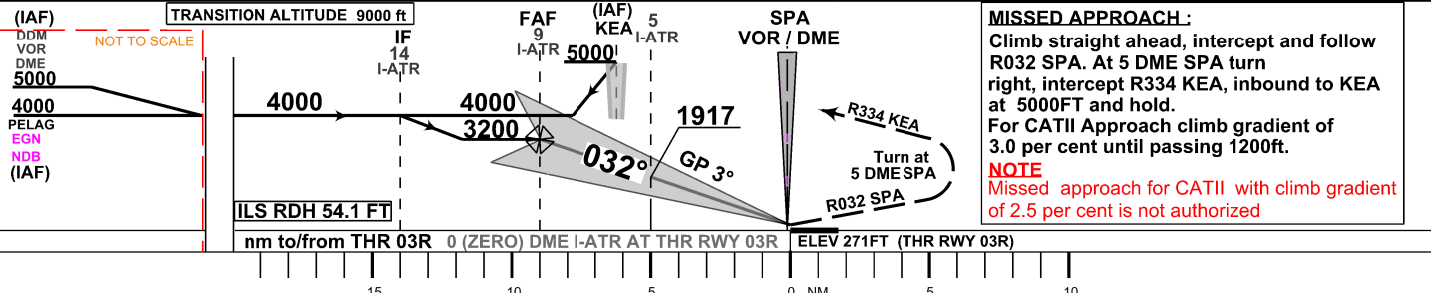
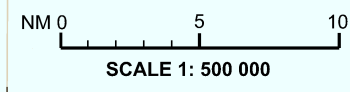


LGP1	5000 FT-GND
LGP7	1000 FT-GND
LGP9	2000 FT-GND
LGP12	5000 FT-GND
LGD67A	4000 FT-GND
LGD67B	2000 FT-GND
LGD75	3700 FT-GND
LGD85	1000 FT-MSL
LGD86	1000 FT-MSL

PELAG
37°19'15.00"N
023°45'31.00"E



SPOT ELEVATIONS ARE IN FEET
LEVELS INDICATE ALTITUDE AND ARE IN FEET
BEARINGS, TRACKS AND RADIALS ARE MAGNETIC
DISTANCES ARE IN NM
VAR 5°E/2024 - Annual Change 6'01"E



MISSED APPROACH:
Climb straight ahead, intercept and follow R032 SPA. At 5 DME SPA turn right, intercept R334 KEA, inbound to KEA at 5000FT and hold.
For CATII Approach climb gradient of 3.0 per cent until passing 1200ft.
NOTE
Missed approach for CATII with climb gradient of 2.5 per cent is not authorized

OCA / H	A	B	C	D	DL
STRAIGHT-IN APPROACH (ALT/HEIGHT W.R.T. THR RWY 03R ELEVATION)	CAT I FT		471 / 200		581 / 310
	CAT II FT	(SEE NOTE)	421 / 150		
	LOC ONLY FT		690 / 419		
CIRCLING (ALT/HEIGHT W.R.T. A/D ELEVATION)	1200/892	1300/992		N / A	

nm/h	100	135	160	185
ft/min	530	720	850	980

DISTANCE I-ATR DME	4	3	2
ALTITUDE 5.2% APPROACH	1610	1300	980