

STANDARD DEPARTURE CHART - INSTRUMENT

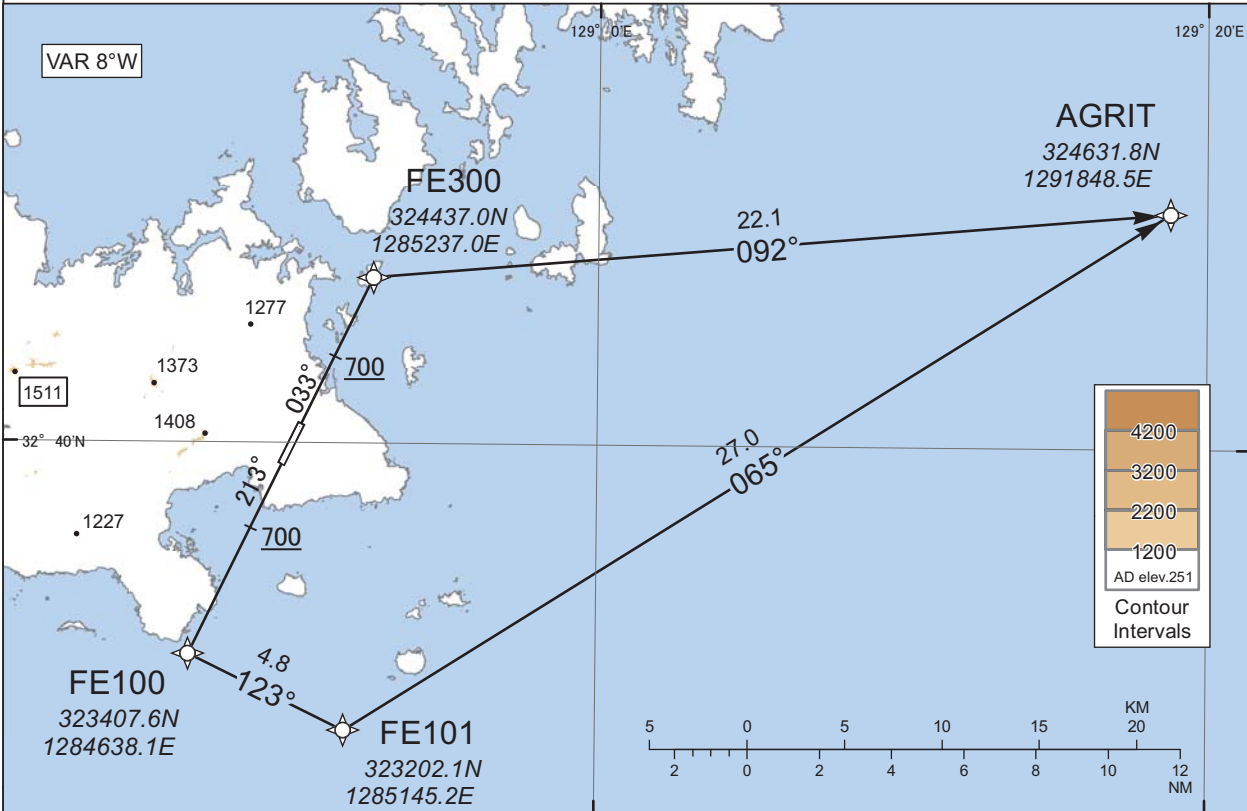
RJFE / FUKUE

RNAV SID

AGRIT ONE DEPARTURE

RNP1

Note GNSS required.



RWY03 : Climb on HDG033° at or above 700FT, direct to FE300, to AGRIT.

RWY21 : Climb on HDG213° at or above 700FT, direct to FE100, to FE101, to AGRIT.

RWY03

Serial Number	Path Descriptor	Waypoint Identifier	Fly Over	Course °M(°T)	Magnetic Variation	Distance (NM)	Turn Direction	Altitude (FT)	Speed (KIAS)	Vertical Angle	Navigation Specification
001	VA	-	-	033 (025.6)	-7.5	-	-	+700	-	-	RNP1
002	DF	FE300	-	-	-7.5	-	-	-	-	-	RNP1
003	TF	AGRIT	-	092 (084.9)	-7.5	22.1	-	-	-	-	RNP1

RWY21

Serial Number	Path Descriptor	Waypoint Identifier	Fly Over	Course °M(°T)	Magnetic Variation	Distance (NM)	Turn Direction	Altitude (FT)	Speed (KIAS)	Vertical Angle	Navigation Specification
001	VA	-	-	213 (205.7)	-7.5	-	-	+700	-	-	RNP1
002	DF	FE100	-	-	-7.5	-	-	-	-	-	RNP1
003	TF	FE101	-	123 (115.8)	-7.5	4.8	-	-	-	-	RNP1
004	TF	AGRIT	-	065 (057.4)	-7.5	27.0	-	-	-	-	RNP1

CHANGE : Navigation Specification(Basic RNP1 → RNP1).