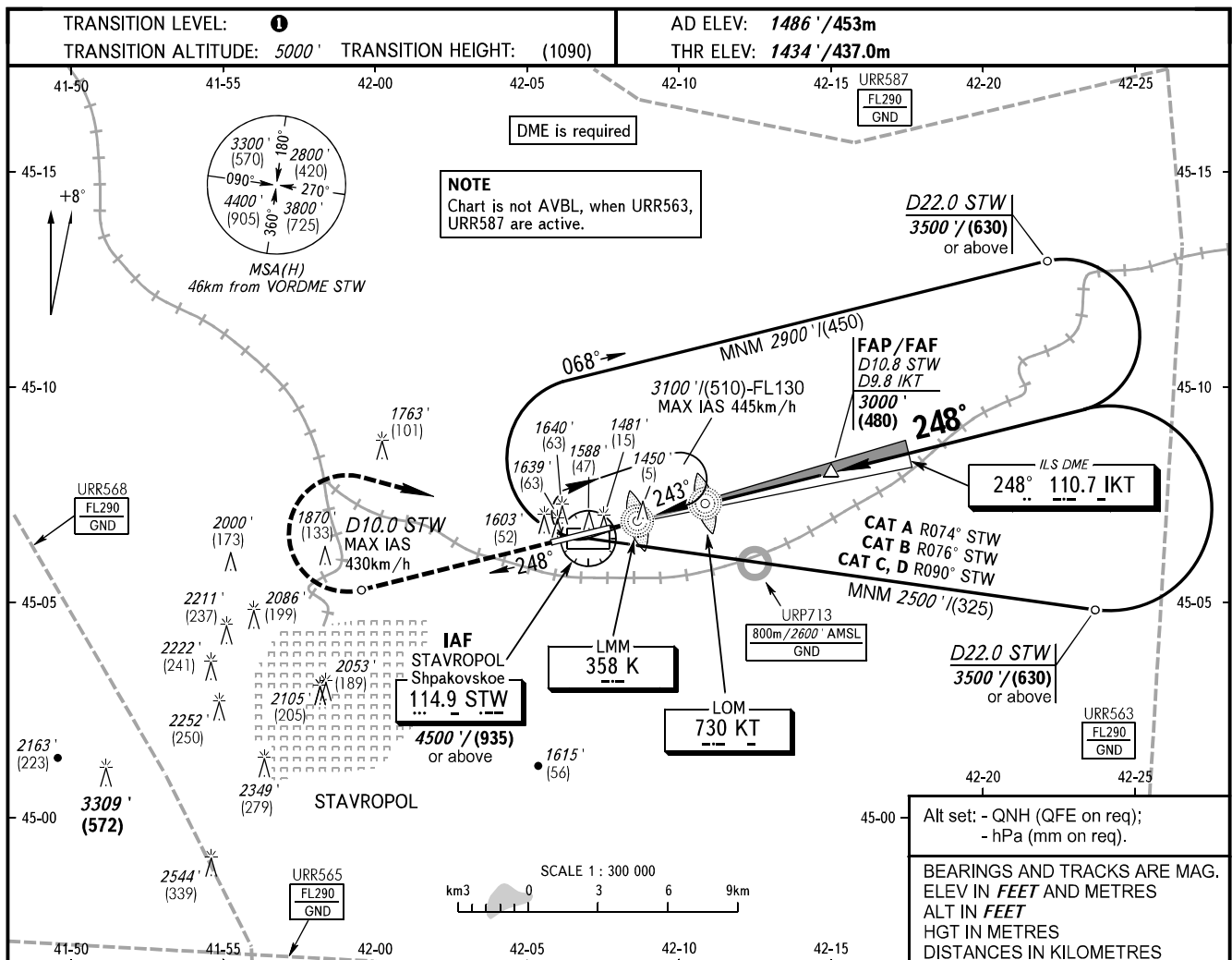


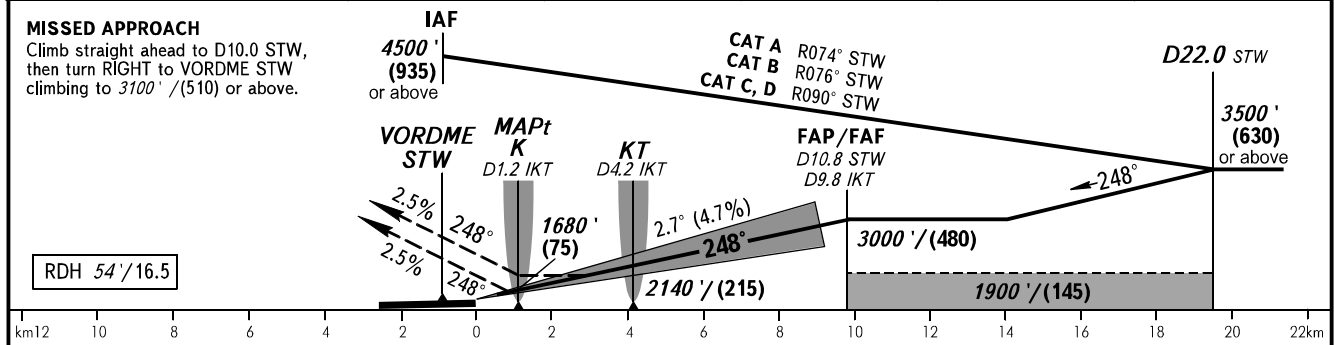
**INSTRUMENT
APPROACH
CHART - ICAO**

TOWER **120.900**

STAVROPOL, RUSSIA
SHPAKOVSKOYE
ILS U CAT I, LOC U RWY 25



DME IKT	2.0	4.0	6.0	8.0	9.8
ALTITUDE/HEIGHT	1800' / (115)	2110' / (210)	2420' / (305)	2730' / (395)	3000' / (480)



OCA(H)		A	B	C	D						
Straight-in Approach	CAT I	1587' (153') (47)	1599' (166') (51)	1612' (179') (54)	1623' (189') (58)						
	LOC	1700' (270') (85)	1700' (270') (85)	1700' (270') (85)	1700' (270') (85)						
Circling		1940' (450') (140)	1980' (500') (155)	2150' (670') (205)	2270' (780') (240)						
GROUND SPEED		km/h	150	180	210	240	270	300	330	360	390
RATE OF DESCENT		m/s	1.9	2.3	2.7	3.1	3.5	3.9	4.3	4.7	5.0
		ft/min	385	463	540	617	694	771	848	925	1002

TRANSITION LEVEL:
- FL060 when QNH is 1013 hPa (760mm mercury column) or above;
- FL070 when QNH is 977 hPa (733mm mercury column) or above, but less than 1013 hPa (760mm mercury column);
- FL080 when QNH is less than 977 hPa (733mm mercury column).

WARNING:
1. ILS DME IKT reads zero at RWY 25 THR.
2. MAPt at LMM K. Timing not authorized for defining MAPt.
3. STAR PARAT 1S, BEDAP 1S, NETMI 1S, LEGNA 1S - pass IAF at FL060 or above.

CHANGE: Limiting bearing line withdrawn, URP713