

STANDARD DEPARTURE CHART-INSTRUMENT

RJSN / NIIGATA

RNAV SID

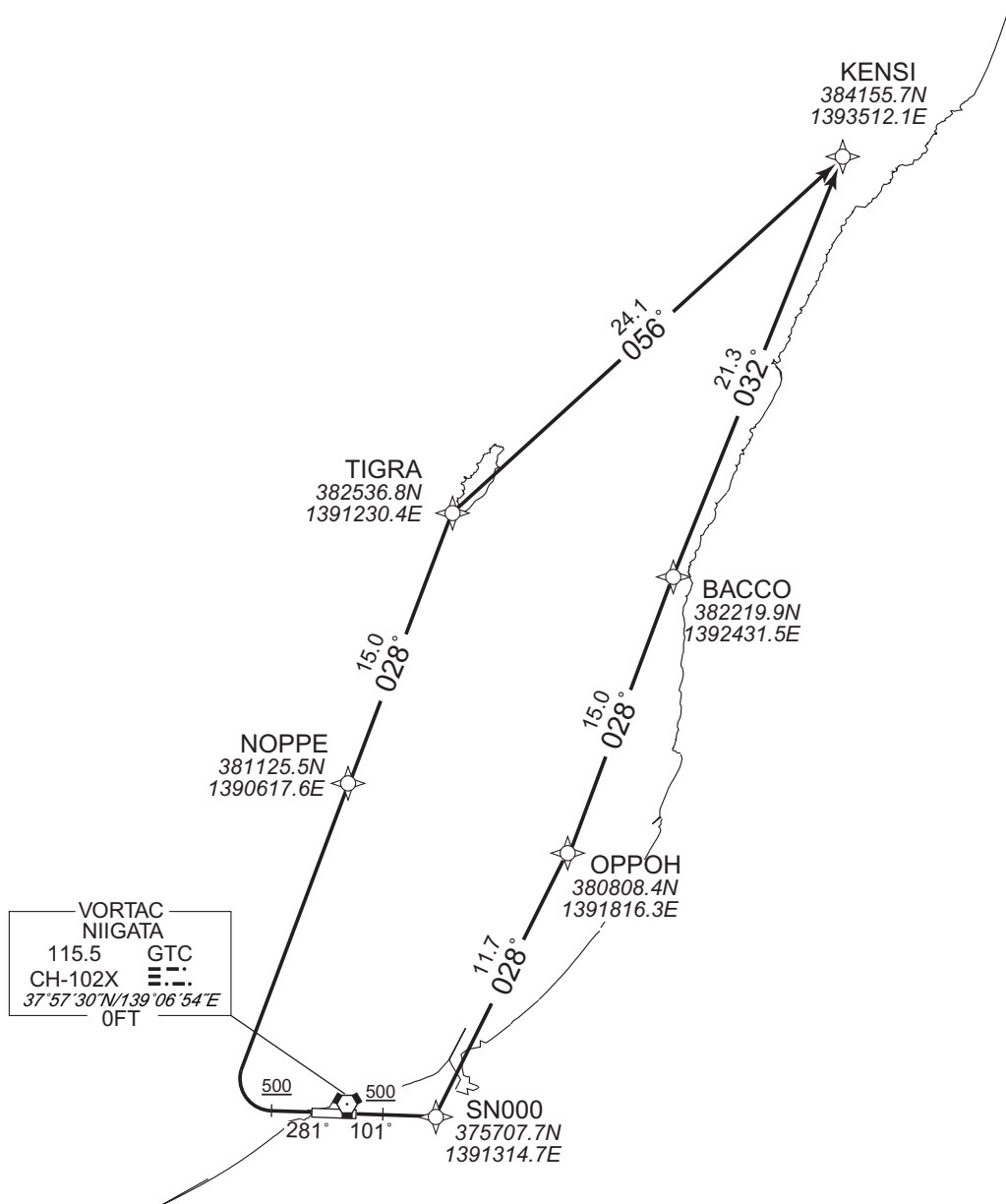
SASAGA THREE DEPARTURE

RNP1

Note GNSS required.

VAR 9°W

CHANGE : Navigation Specification(Basic RNP1 → RNP1).



RWY10 : Climb on HDG101° at or above 500FT, direct to SN000, to OPPOH, to BACCO, to KENSI.
 RWY28 : Climb on HDG281° at or above 500FT, turn right direct to NOPEN, to TIGRA, to KENSI.

NOTE RWY10 : 5.0% climb gradient required up to 500FT.

STANDARD DEPARTURE CHART-INSTRUMENT

RJSN / NIIGATA

RNAV SID

SASAGA THREE DEPARTURE

RWY10

Serial Number	Path Descriptor	Waypoint Identifier	Fly Over	Course °M(°T)	Magnetic Variation	Distance (NM)	Turn Direction	Altitude (FT)	Speed (KIAS)	Vertical Angle	Navigation Specification
001	VA	-	-	101 (092.7)	-8.6	-	-	+500	-	-	RNP1
002	DF	SN000	-	-	-8.6	-	-	-	-	-	RNP1
003	TF	OPPOH	-	028 (019.7)	-8.6	11.7	-	-	-	-	RNP1
004	TF	BACCO	-	028 (019.1)	-8.6	15.0	-	-	-	-	RNP1
005	TF	KENSI	-	032 (023.0)	-8.6	21.3	-	-	-	-	RNP1

RWY28

Serial Number	Path Descriptor	Waypoint Identifier	Fly Over	Course °M(°T)	Magnetic Variation	Distance (NM)	Turn Direction	Altitude (FT)	Speed (KIAS)	Vertical Angle	Navigation Specification
001	VA	-	-	281 (272.7)	-8.6	-	-	+500	-	-	RNP1
002	DF	NOPPE	-	-	-8.6	-	R	-	-	-	RNP1
003	TF	TIGRA	-	028 (018.9)	-8.6	15.0	-	-	-	-	RNP1
004	TF	KENSI	-	056 (047.3)	-8.6	24.1	-	-	-	-	RNP1

CHANGE : Navigation Specification(Basic RNP1 → RNP1).