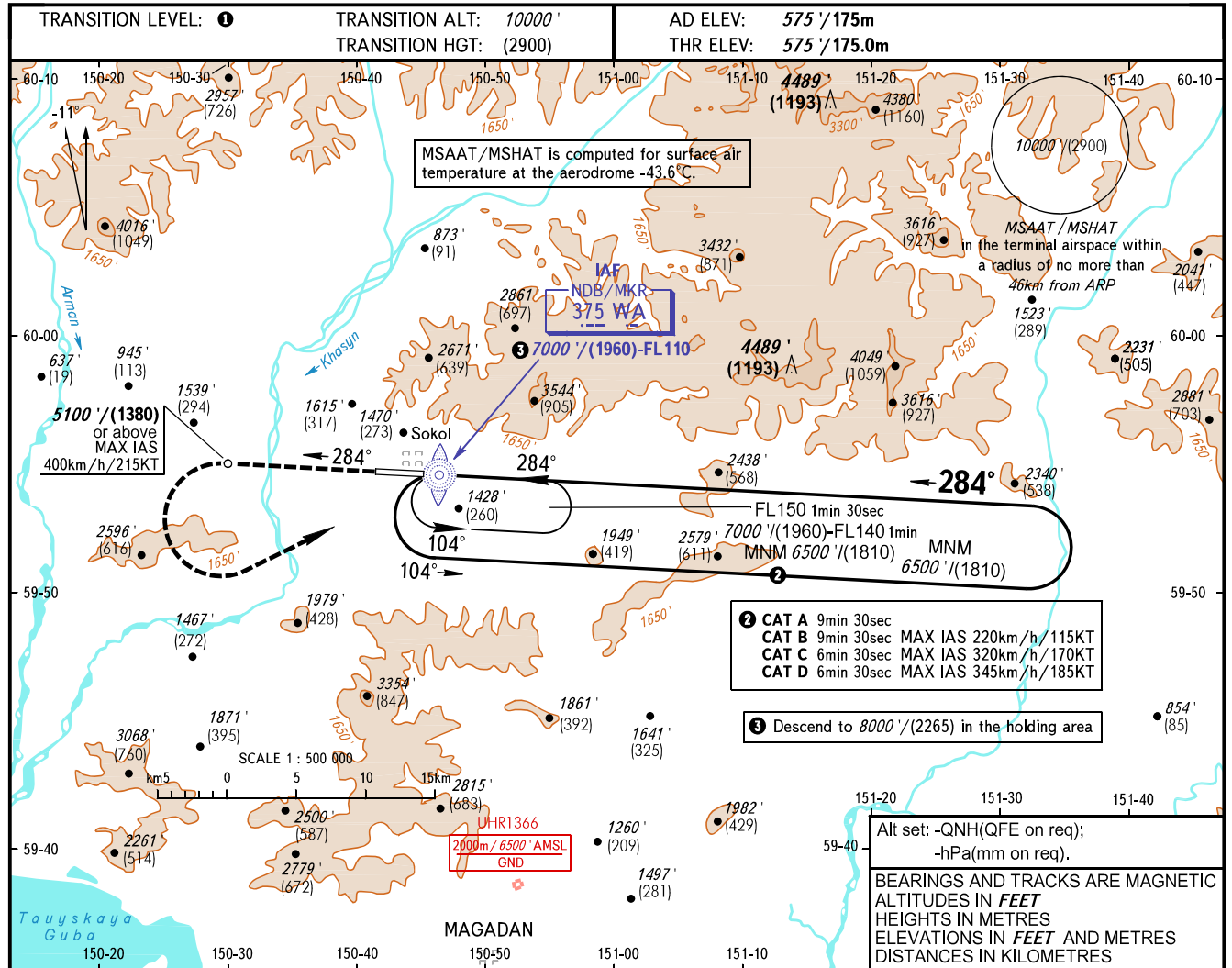


**INSTRUMENT
APPROACH
CHART - ICAO**

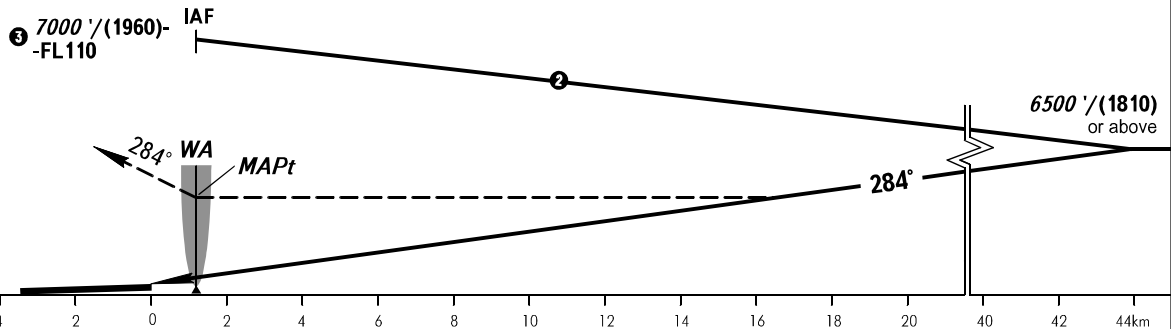
**MAGADAN, RUSSIA
SOKOL
NDB Y RWY 28**

APPROACH **119.300**
TOWER **120.800**



MISSED APPROACH

Climb straight ahead to 5100' / (1380) or above, turn LEFT to NDB / MKR WA climbing to 6500' / (1810) or above, then proceed according to the chart or to the holding area.



OCA(H)	A	B	C	D
Straight-in Approach	3770' (3200') (975)	4350' (3780') (1155)	3770' (3200') (975)	4570' (4000') (1220)
Circling	3770' (3200') (975)	4350' (3780') (1155)	3770' (3200') (975)	4570' (4000') (1220)

1 TRANSITION LEVEL:
- FL 110 when QNH is 1013 hPa (760mm mercury column) or above;
- FL 120 when QNH is 977 hPa (733mm mercury column) or above, but less than 1013 hPa (760mm mercury column);
- FL 130 when QNH is less than 977 hPa (733mm mercury column).

WARNING:
1. Turn before passing MAPt is PROHIBITED.
2. MAPt at NDB / MKR WA.
Timing not authorized for defining MAPt.

Visual manoeuvring to the North of AD is PROHIBITED.