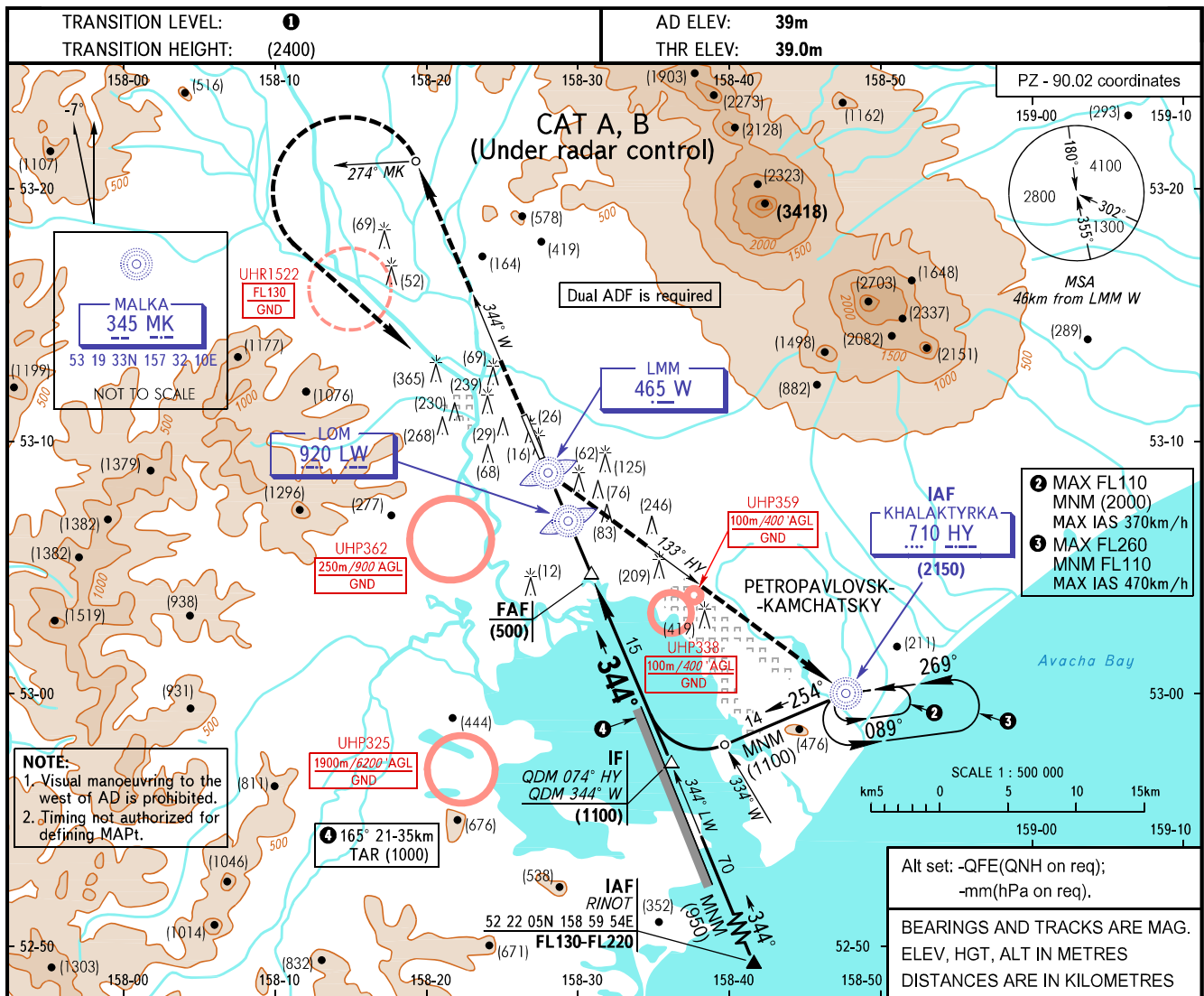


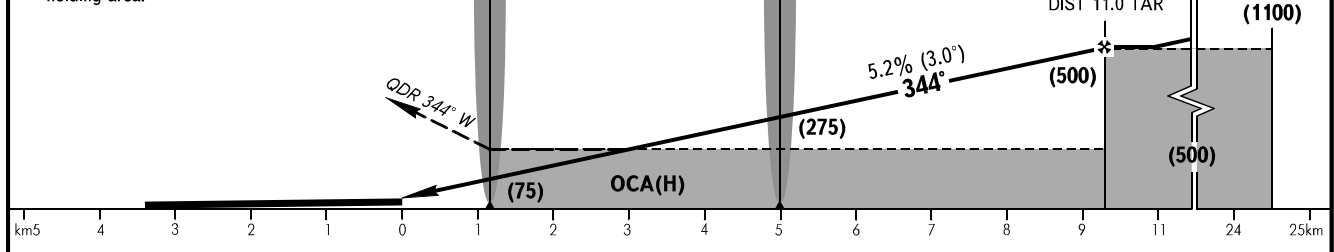
**INSTRUMENT
APPROACH
CHART - ICAO**

START **118.100**
RADAR **119.400**

PETROPAVLOVSK-KAMCHATSKY, RUSSIA
YELIZOVO
NDB Y RWY 34L



MISSED APPROACH
Climb on QDR 344° W to QDM 274° MK, turn LEFT to LMM W, then proceed on QDM 133° HY to NDB HY climbing to (2150) or above, then proceed to holding area.



OCA(H)		A	B	C	D						
Straight-in	MNM climb gradient for missed APCH	2.5%	320(285)	320(285)							
		2.9%	230(195)	230(195)							
Circling		460(420)	460(420)								
GROUND SPEED		km/h	150	180	210	240	270	300	330	360	390
RATE OF DESCENT		m/s	2.2	2.6	3.0	3.5	3.9	4.3	4.8	5.2	5.6

1 TRANSITION LEVEL:
- FL090 when QFE is 756mm mercury column or above;
- FL100 when QFE is 729mm mercury column or above, but less than 756mm mercury column;
- FL110 when QFE is less than 729mm mercury column.

WARNING
During missed approach maintain climb gradient of 2.9% up to (900).