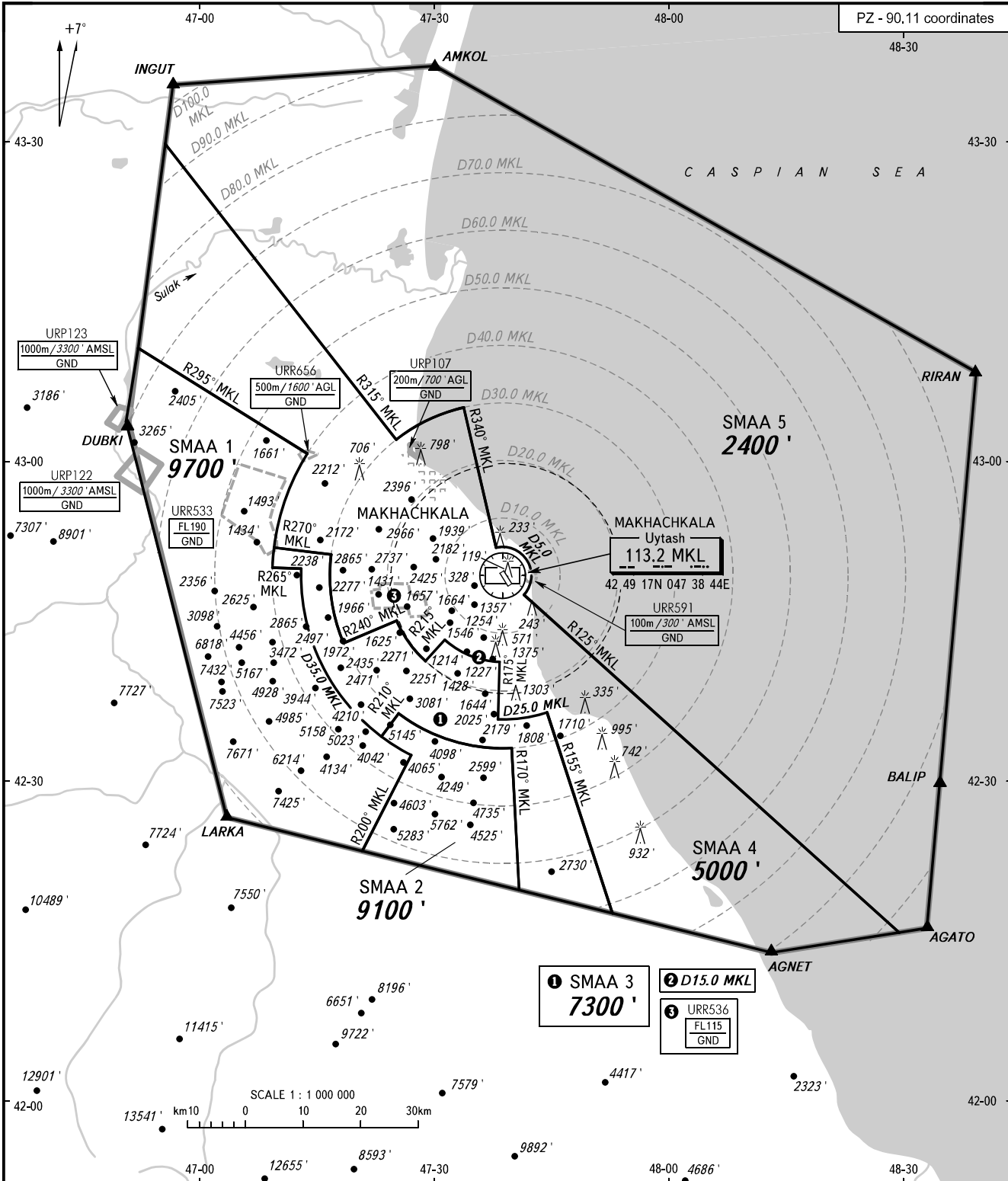


ATC SURVEILLANCE MINIMUM  
ALTITUDE CHART - ICAO

ELEV  
16' / 5m  
TRANSITION ALTITUDE: 10000'

MAKHACHKALA, RUSSIA

UYTASH



APPROACH 119.700  
RADAR 121.300  
START 121.300

**WARNING**  
The altitude value of SMAA is calculated for ISA conditions (+15°C). When vectoring is executed at a temperature of 0°C or below, the minimum vectoring altitude must be corrected by altimeter temperature correction.

**NOTE**  
The chart may only be used for cross-checking of altitudes assigned while the aircraft is identified under radar control.

BEARINGS AND TRACKS ARE MAGNETIC  
ALTITUDES AND ELEVATIONS IN FEET  
DISTANCES IN KILOMETRES

CHANGE: WPT, CTR, CTA

SURVEILLANCE MINIMUM ALTITUDE AREAS		
IDENT	MNM ALT	LATERAL LIMITS (PZ-90.11 coordinates)
SMAA 1	9700 ft	431028.3N 0465202.2E – 430040.6N 0471346.0E, then anticlockwise by arc of a circle radius of 40 KM centred at 424916.6N 0473843.9E to 424957.9N 0470923.9E – 424953.1N 0471303.9E, then anticlockwise by arc of a circle radius of 35 KM centred at 424916.6N 0473843.9E to 423225.4N 0472708.0E – 422324.4N 0472058.6E – 422630.0N 0470348.1E – 430333.1N 0465053.0E – 431028.3N 0465202.2E.
SMAA 2	9100 ft	422324.4N 0472058.6E – 423225.4N 0472708.0E, then clockwise by arc of a circle radius of 35 KM centred at 424916.6N 0473843.9E to 423409.7N 0472320.8E – 423619.4N 0472532.2E, then anticlockwise by arc of a circle radius of 30 KM centred at 424916.6N 0473843.9E to 423305.9N 0473953.0E – 421946.2N 0474049.7E – 422324.4N 0472058.6E.
SMAA 3	7300 ft	424957.9N 0470923.9E – 425150.7N 0470935.0E – 425112.9N 0471652.5E, then anticlockwise by arc of a circle radius of 30 KM centred at 424916.6N 0473843.9E to 424254.8N 0471830.5E – 424502.5N 0472514.5E, then anticlockwise by arc of a circle radius of 20 KM centred at 424916.6N 0473843.9E to 424114.5N 0472856.2E – 424315.1N 0473122.9E, then anticlockwise by arc of a circle radius of 15 km centred at 424916.6N 0473843.9E to 424110.9N 0473821.0E – 423547.1N 0473805.9E, then anticlockwise by arc of a circle radius of 25 KM centred at 424916.6N 0473843.9E to 423626.2N 0474423.0E – 421734.9N 0475236.7E – 421946.2N 0474049.7E – 423305.9N 0473953.0E, then clockwise by arc of a circle radius of 30 KM centred at 424916.6N 0473843.9E to 423619.4N 0472532.2E – 423409.7N 0472320.8E, then clockwise by arc of a circle radius of 35 KM centred at 424916.6N 0473843.9E to 424953.1N 0471303.9E – 424957.9N 0470923.9E.
SMAA 4	5000 ft	421734.9N 0475236.7E – 423626.2N 0474423.0E, then clockwise by arc of a circle radius of 25 KM centred at 424916.6N 0473843.9E to 423547.0N 0473809.6E – 424110.9N 0473821.0E, then clockwise by arc of a circle radius of 15 KM centred at 424916.6N 0473843.9E to 424315.1N 0473122.9E – 424114.5N 0472856.2E, then clockwise by arc of a circle radius of 20 KM centred at 424916.6N 0473843.9E to 424502.5N 0472514.5E – 424254.8N 0471830.5E, then clockwise by arc of a circle radius of 30 KM centred at 424916.6N 0473843.9E to 425112.9N 0471652.5E – 425150.7N 0470935.0E, then clockwise by arc of a circle radius of 40 KM centred at 424916.6N 0473843.9E to 430040.6N 0471346.0E – 431028.3N 0465202.2E – 432939.1N 0465515.6E – 430201.7N 0472508.0E, then clockwise by arc of a circle radius of 30 KM centred at 424916.6N 0473843.9E to 430503.6N 0473345.5E – 425154.5N 0473754.3E, then clockwise by arc of a circle radius of 5 KM centred at 424916.6N 0473843.9E to 424728.2N 0474127.4E – 421536.1N 0482850.5E – 421348.1N 0481242.0E – 421734.9N 0475236.7E.
SMAA 5	2400 ft	432939.1N 0465515.6E – 433511.9N 0465612.0E – 433705.9N 0473000.0E – 430806.0N 0483923.9E – 421559.1N 0483219.0E – 421536.1N 0482850.5E – 424728.2N 0474127.4E, then anticlockwise by arc of a circle radius of 5 KM centred at 424916.6N 0473843.9E to 425154.5N 0473754.3E – 430503.6N 0473345.5E, then anticlockwise by arc of a circle radius of 30 KM centred at 424916.6N 0473843.9E to 430201.7N 0472508.0E – 432939.1N 0465515.6E.