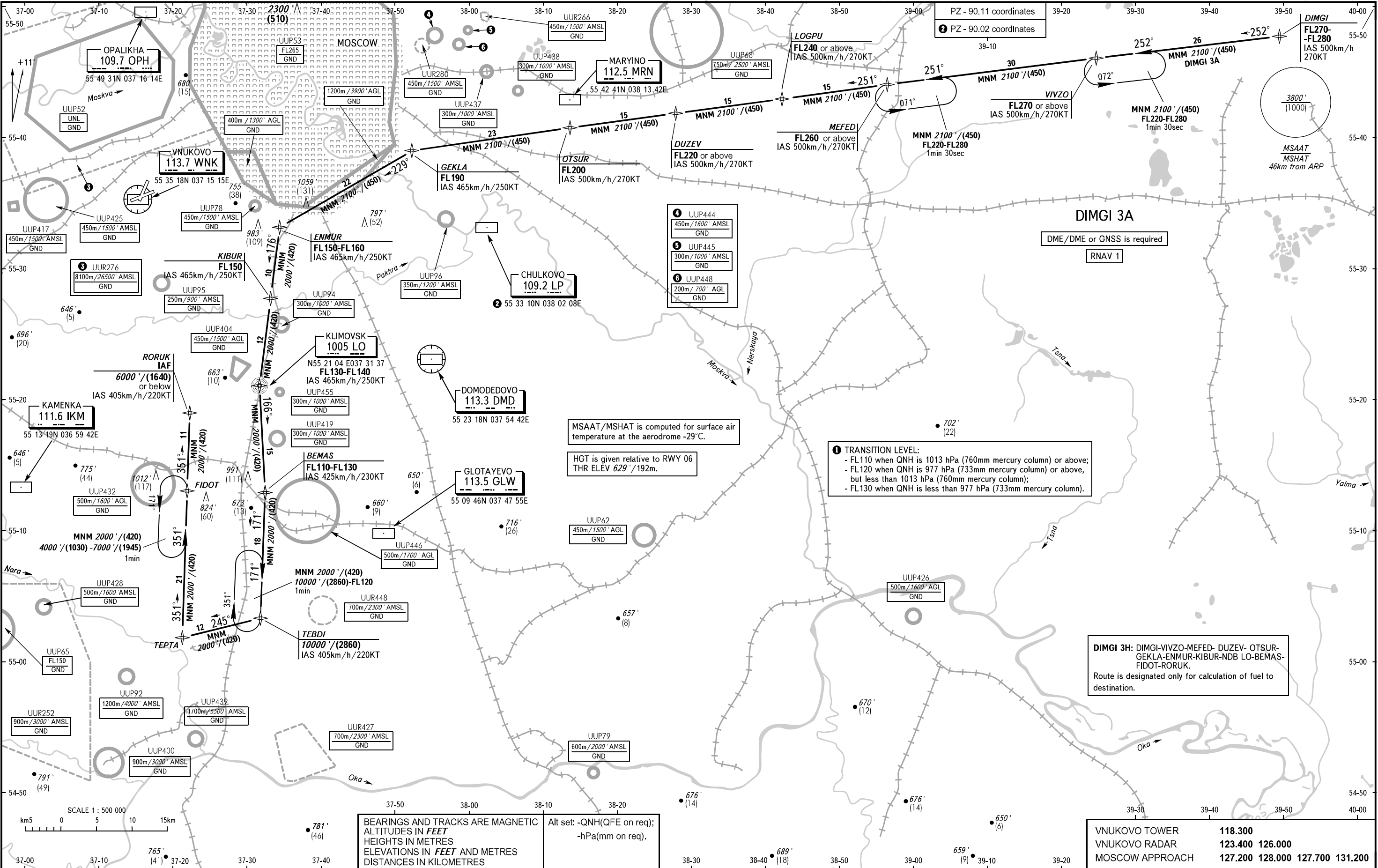


STANDARD ARRIVAL CHART
INSTRUMENT (STAR) - ICAO

MOSCOW, RUSSIA
VNUKOVO
RNAV RWY 01/19, 06/24

TRANSITION
LEVEL: 1



- 4 UUP444
450m/1600' AMSL
GND
- 5 UUP445
300m/1000' AMSL
GND
- 6 UUP448
200m/700' AGL
GND

1 TRANSITION LEVEL:
 - FL110 when QNH is 1013 hPa (760mm mercury column) or above;
 - FL120 when QNH is 977 hPa (733mm mercury column) or above,
 but less than 1013 hPa (760mm mercury column);
 - FL130 when QNH is less than 977 hPa (733mm mercury column).

MSAAT/MSHAT is computed for surface air temperature at the aerodrome -29°C.
 HGT is given relative to RWY 06
 THR ELEV 629' / 192m.

DIMGI 3H: DIMGI-VIVZO-MEFED- DUZEV- OTSUR- GEKLA-ENMUR-KIBUR-NDB LO-BEMAS-FIDOT-RORUK.
 Route is designated only for calculation of fuel to destination.

BEARINGS AND TRACKS ARE MAGNETIC
 ALTITUDES IN FEET
 HEIGHTS IN METRES
 ELEVATIONS IN FEET AND METRES
 DISTANCES IN KILOMETRES

Alt set: -QNH(QFE on req);
 -hPa(mm on req).

VNUKOVO TOWER	118.300
VNUKOVO RADAR	123.400 126.000
MOSCOW APPROACH	127.200 128.000 127.700 131.200