

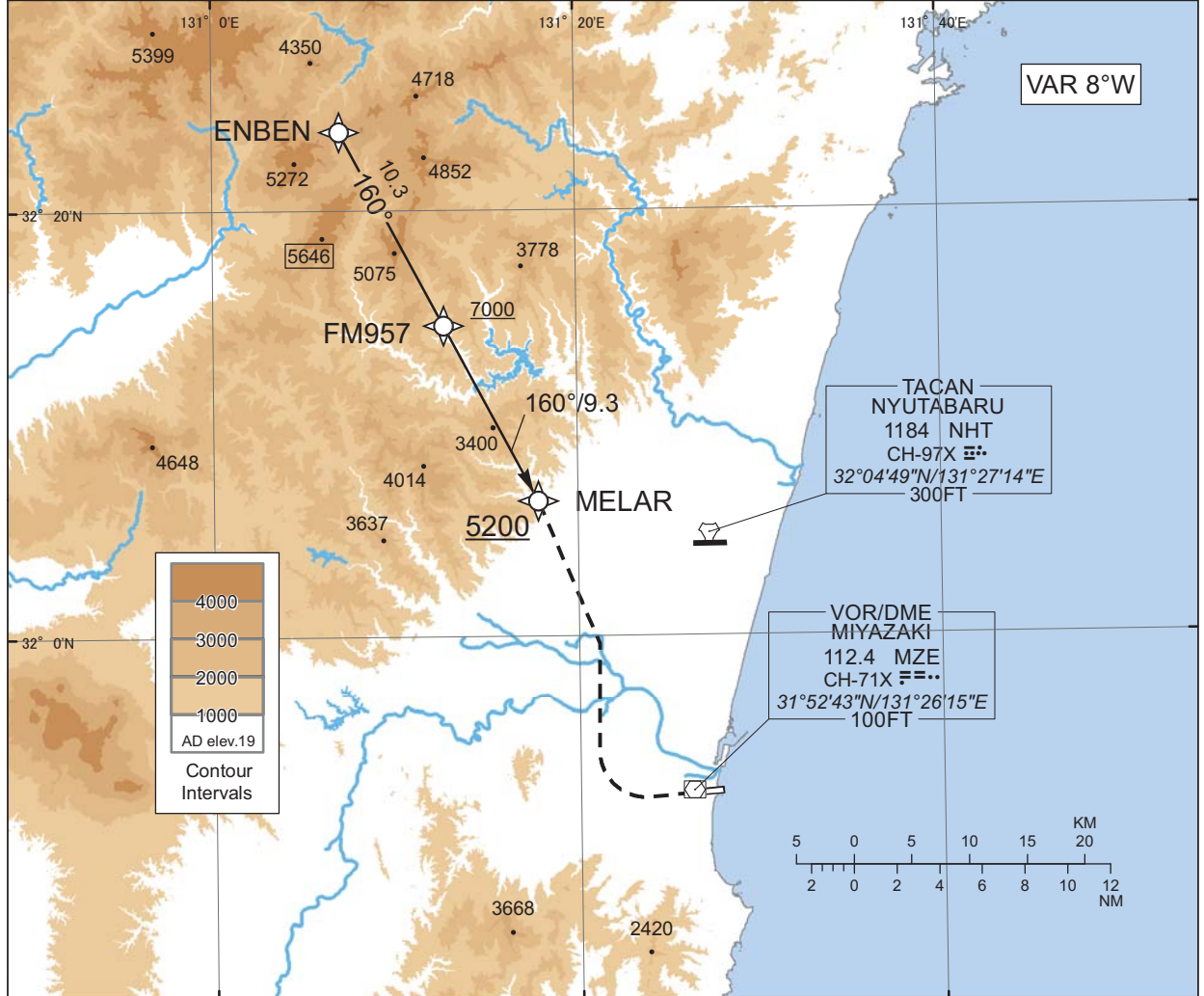
STANDARD ARRIVAL CHART - INSTRUMENT

RJFM / MIYAZAKI

RNAV STAR RWY09

MELAR ARRIVAL RNAV1

Note 1) DME/DME/IRU or GNSS required.  
2) RADAR service required.



CHANGE : PROC renamed. PROC course. VAR. Waypoint Coordinates added.

From ENBEN, to FM957 at or above 7000FT, to MELAR at or above 5200FT.

Critical DME	-
DME GAP	-
Inappropriate Nav aids	See AD1.1.6.10.3. Inappropriate NAVAIDs for RNAV1

Serial Number	Path Descriptor	Waypoint Identifier	Fly Over	Course °M(°T)	Magnetic Variation	Distance (NM)	Turn Direction	Altitude (FT)	Speed (KIAS)	Vertical Angle	Navigation Specification
001	IF	ENBEN	-	-	-7.5	-	-	-	-	-	RNAV1
002	TF	FM957	-	160 (152.2)	-7.5	10.3	-	+7000	-	-	RNAV1
003	TF	MELAR	-	160 (152.3)	-7.5	9.3	-	+5200	-	-	RNAV1

Waypoint Coordinates

Waypoint Identifier	Coordinates
ENBEN	322342.1N / 1310702.4E
FM957	321435.2N / 1311243.0E
MELAR	320620.1N / 1311750.2E