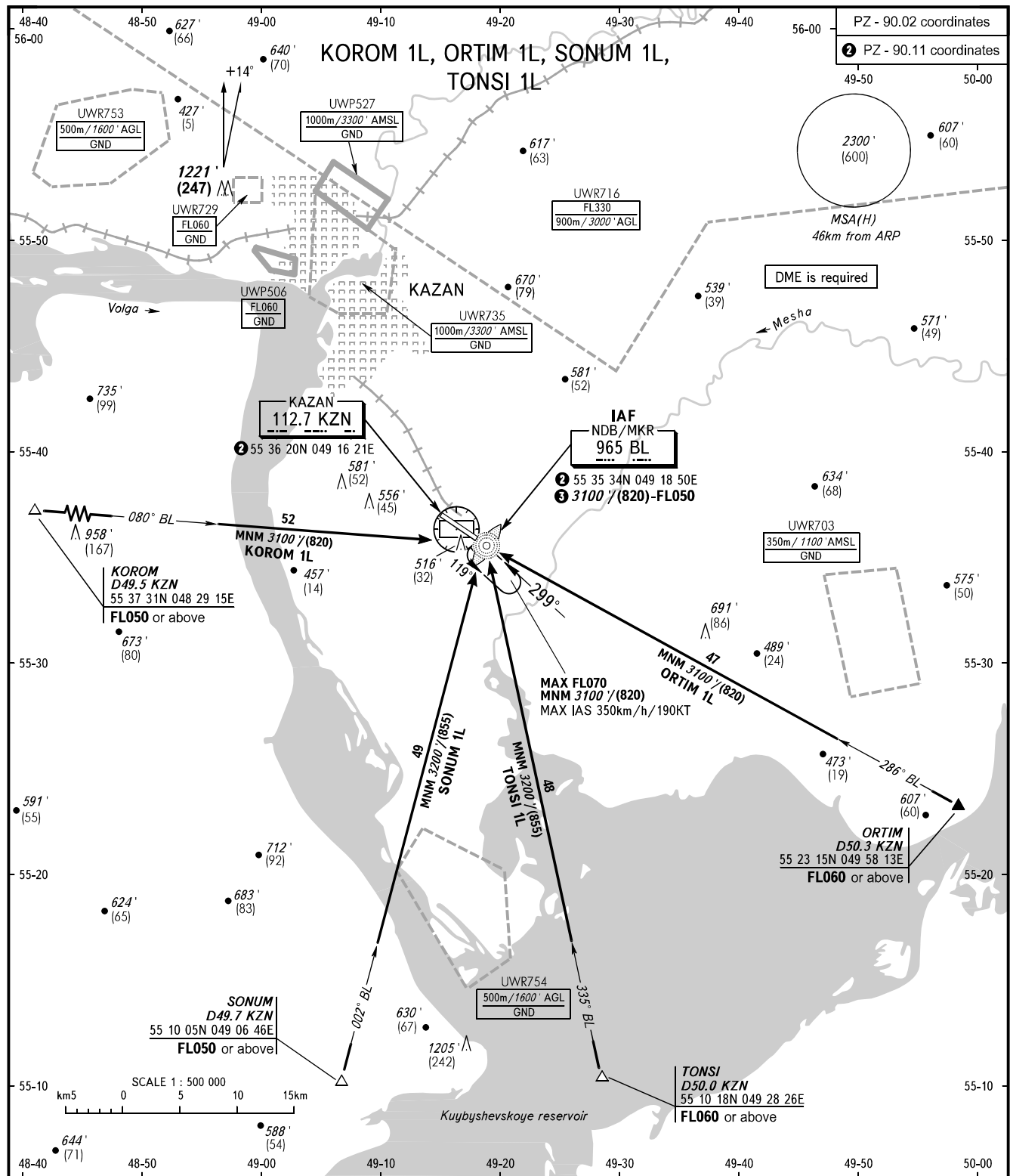


STANDARD ARRIVAL CHART
INSTRUMENT (STAR) - ICAO

KAZAN, RUSSIA
KAZAN
RWY 29

TRANSITION
LEVEL: ①



APPROACH Sector WEST	135.225	① TRANSITION LEVEL: - FL050 when QNH is 1013 hPa (760mm mercury column) or above; - FL060 when QNH is 977 hPa (733mm mercury column) or above, but less than 1013 hPa (760mm mercury column); - FL070 when QNH is less than 977 hPa (733mm mercury column).
APPROACH Sector EAST	128.625	
RADAR START	119.400	③ For STAR SONUM 1L and TONSI 1L - cross IAF at 3200' (885)-FL050. NOTE Holding area is not AVBL when UWR716 is active.
START	120.300	
BEARINGS AND TRACKS ARE MAGNETIC ALTITUDES IN FEET HEIGHTS IN METRES ELEVATIONS IN FEET AND METRES DISTANCES IN KILOMETRES		Alt set: -QNH(QFE on req); -hPa(mm on req).

CHANGE: UWP527