

STANDARD DEPARTURE CHART -INSTRUMENT

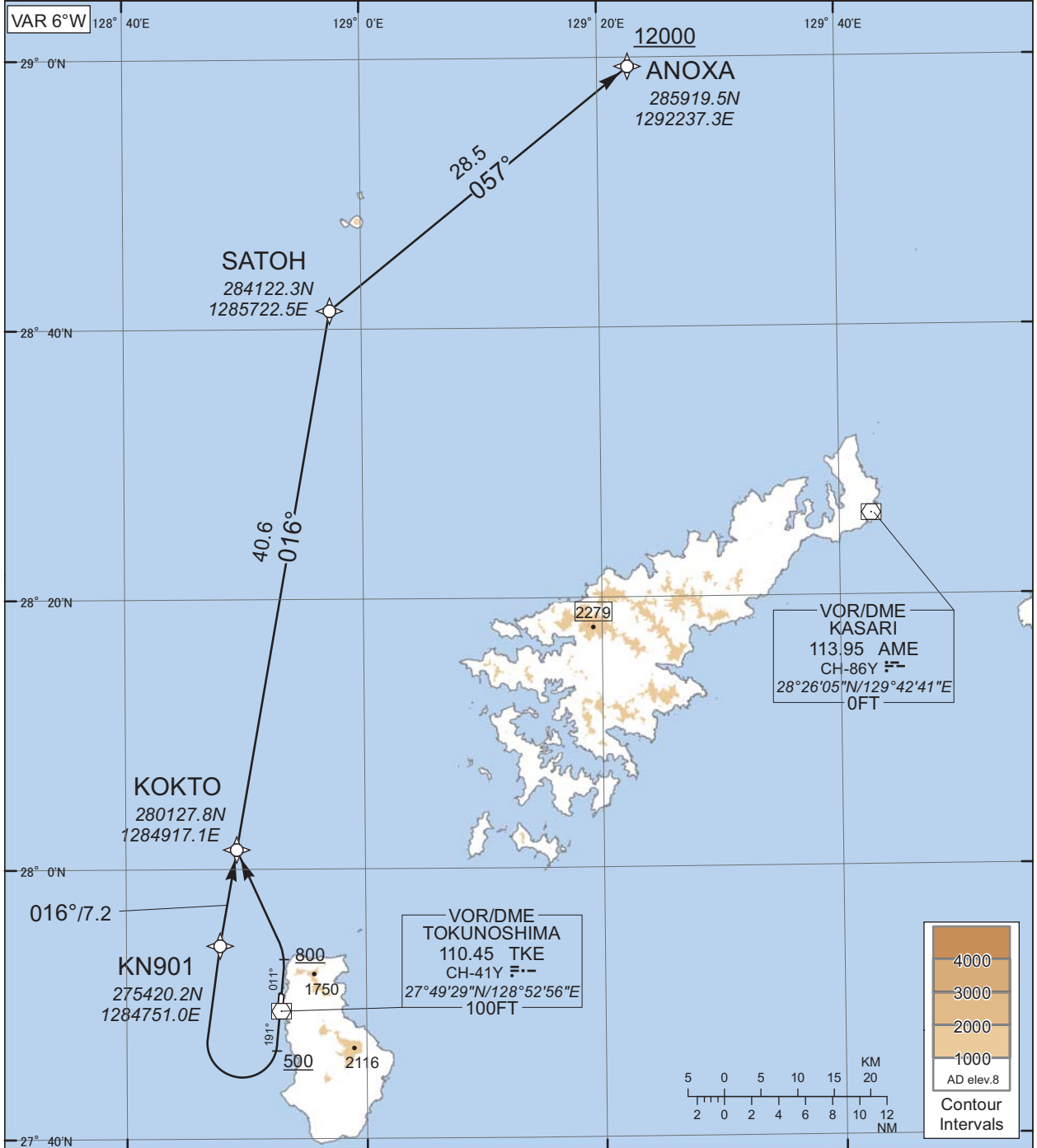
RJKN / TOKUNOSHIMA

RNAV SID

ANOXA TWO DEPARTURE

RNP1

Note GNSS required.



CHANGE : Navigation Specification(Basic RNP1 →RNP1).

RWY01 : Climb on HDG011° at or above 800FT, turn left direct to KOKTO, to SATOH, to ANOXA at or above 12000FT.

RWY19 : Climb on HDG191° at or above 500FT, turn right direct to KN901, to KOKTO, to SATOH, to ANOXA at or above 12000FT.

Note RWY01 : 6.1% climb gradient required up to 800FT.
OBST ALT 460FT located at 1.4NM 029° FM end of RWY01.

STANDARD DEPARTURE CHART -INSTRUMENT

RJKN / TOKUNOSHIMA

RNAV SID

ANOXA TWO DEPARTURE

RWY01

Serial Number	Path Descriptor	Waypoint Identifier	Fly Over	Course °M(°T)	Magnetic Variation	Distance (NM)	Turn Direction	Altitude (FT)	Speed (KIAS)	Vertical Angle	Navigation Specification
001	VA	-	-	011 (005.1)	-6.1	-	-	+800	-	-	RNP1
002	DF	KOKTO	-	-	-6.1	-	L	-	-	-	RNP1
003	TF	SATOH	-	016 (010.1)	-6.1	40.6	-	-	-	-	RNP1
004	TF	ANOXA	-	057 (050.8)	-6.1	28.5	-	+12000	-	-	RNP1

RWY19

Serial Number	Path Descriptor	Waypoint Identifier	Fly Over	Course °M(°T)	Magnetic Variation	Distance (NM)	Turn Direction	Altitude (FT)	Speed (KIAS)	Vertical Angle	Navigation Specification
001	VA	-	-	191 (185.1)	-6.1	-	-	+500	-	-	RNP1
002	DF	KN901	-	-	-6.1	-	R	-	-	-	RNP1
003	TF	KOKTO	-	016 (010.1)	-6.1	7.2	-	-	-	-	RNP1
004	TF	SATOH	-	016 (010.1)	-6.1	40.6	-	-	-	-	RNP1
005	TF	ANOXA	-	057 (050.8)	-6.1	28.5	-	+12000	-	-	RNP1

CHANGE : Navigation Specification(Basic RNP1 → RNP1).