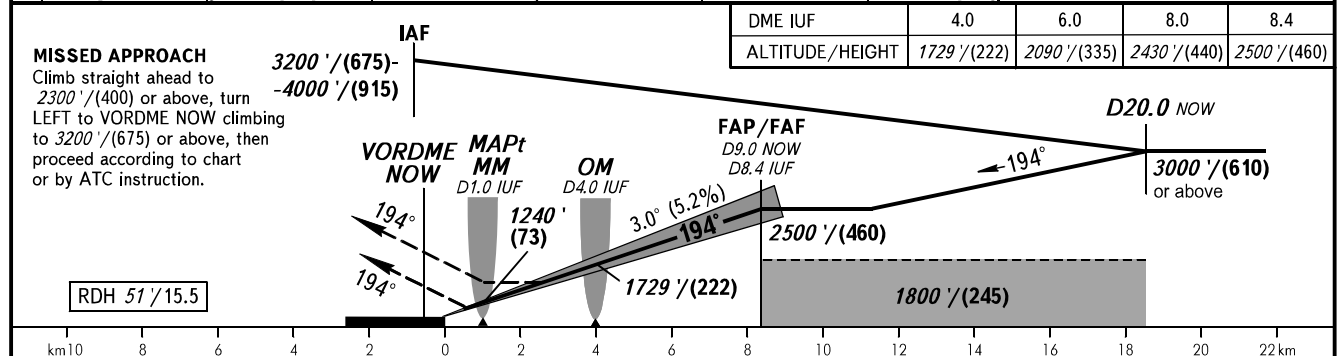
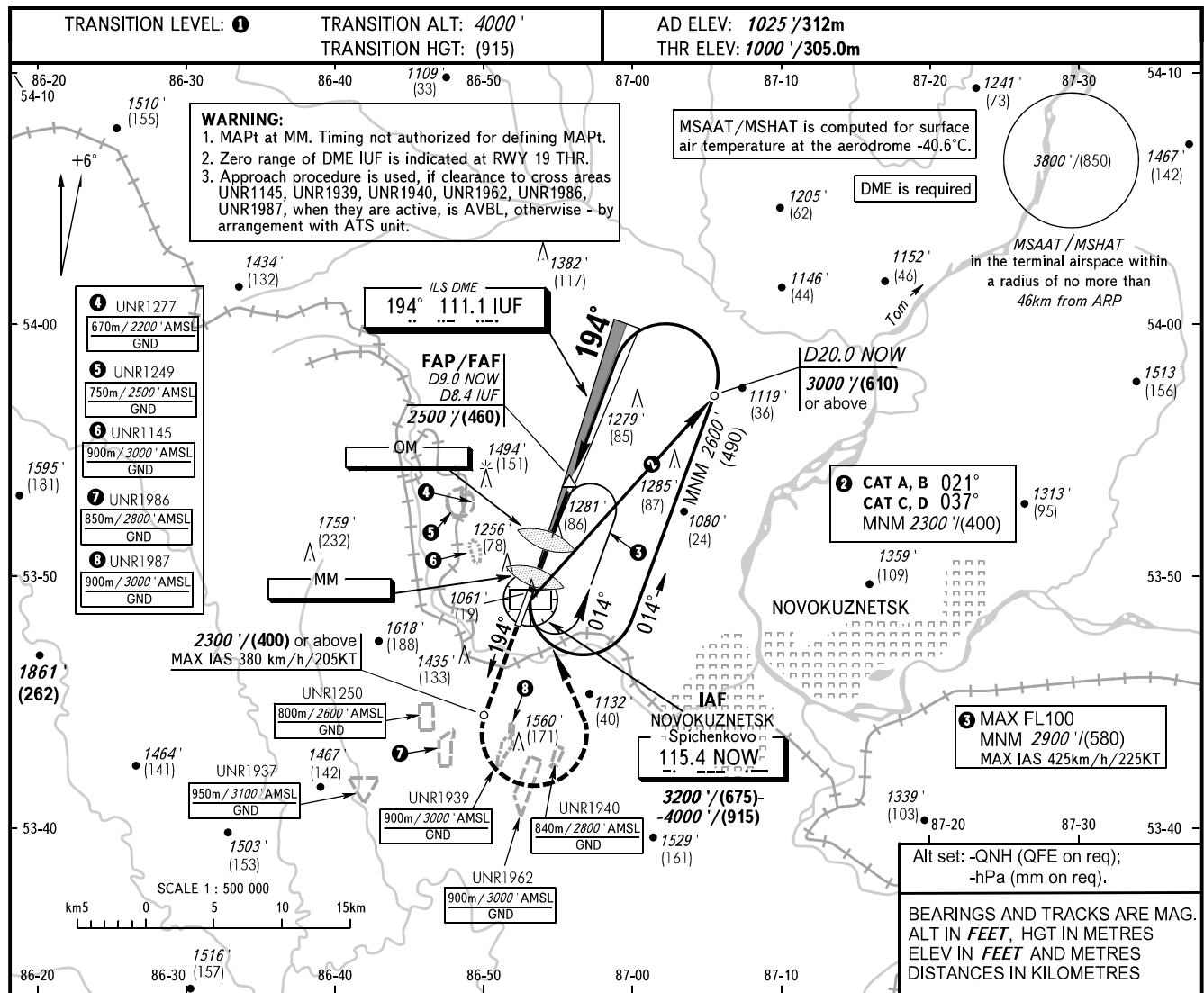


**INSTRUMENT
APPROACH
CHART - ICAO**

APPROACH **118.600**
START **121.200**

**NOVOKUZNETSK, RUSSIA
SPICHENKOVO
ILS W CAT I, LOC W RWY 19**



DME IUF	4.0	6.0	8.0	8.4
ALTITUDE/HEIGHT	1729'/(222)	2090'/(335)	2430'/(440)	2500'/(460)

OCA(H)		A	B	C	D	1 TRANSITION LEVEL: - FL050 when QNH is 1013 hPa (760mm mercury column) or above; - FL060 when QNH is 977 hPa (733mm mercury column) or above, but less than 1013 hPa (760mm mercury column); - FL070 when QNH is less than 977 hPa (733mm mercury column).			
Straight-in Approach	CAT I	1200' (200') (60)	1203' (203') (62)	1211' (211') (65)	1222' (222') (68)				
	LOC	1530' (530') (165)	1530' (530') (165)	1530' (530') (165)	1530' (530') (165)				
Circling		1560' (530') (165)	1730' (710') (220)	1830' (810') (255)	1960' (940') (295)				
GROUND SPEED	km/h	150	180	210	240	270	300	330	360
	kt	81	97	113	130	146	162	178	195
RATE OF DESCENT	m/s	2.2	2.6	3.1	3.5	3.9	4.4	4.8	5.2
	ft/min	433	512	610	689	768	866	945	1024