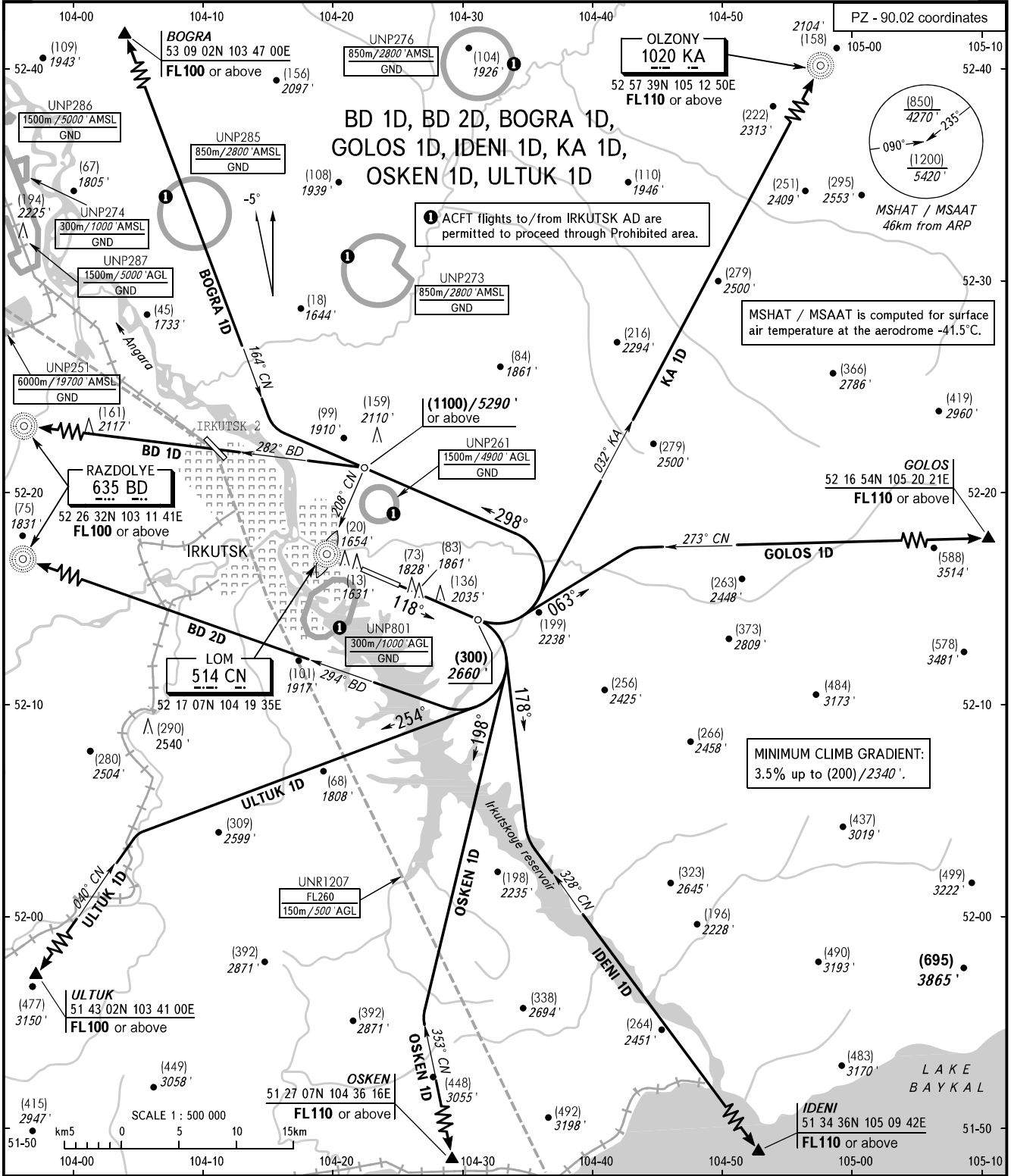


STANDARD DEPARTURE CHART
INSTRUMENT (SID) - ICAO

IRKUTSK, RUSSIA
IRKUTSK
RWY 12

TRANSITION HEIGHT: (1200)
TRANSITION ALTITUDE: 5420'



① ACFT flights to/from IRKUTSK AD are permitted to proceed through Prohibited area.

MSHAT / MSAAT is computed for surface air temperature at the aerodrome -41.5°C.

MINIMUM CLIMB GRADIENT:
3.5% up to (200)/2340'.

TOWER 118.100
RADAR 119.300
APPROACH 125.200

- WARNING:**
- When restricted area UNR1207 is active, BD 1D, BD 2D, OSKEN 1D, ULTUK 1D are AVBL after coordination with ATC.
 - When UNP251 is active SID BD 1D, BD 2D are AVBL after coordination with ATC.

BEARINGS AND TRACKS ARE MAG.
ALTITUDES IN FEET, HEIGHTS IN METRES
ELEVATIONS IN METRES AND FEET
DISTANCES IN KILOMETRES

Alt set: -QFE(QNH on req);
-mm(hPa on req).

CHANGE: VAR, UNP801, TR, MAG