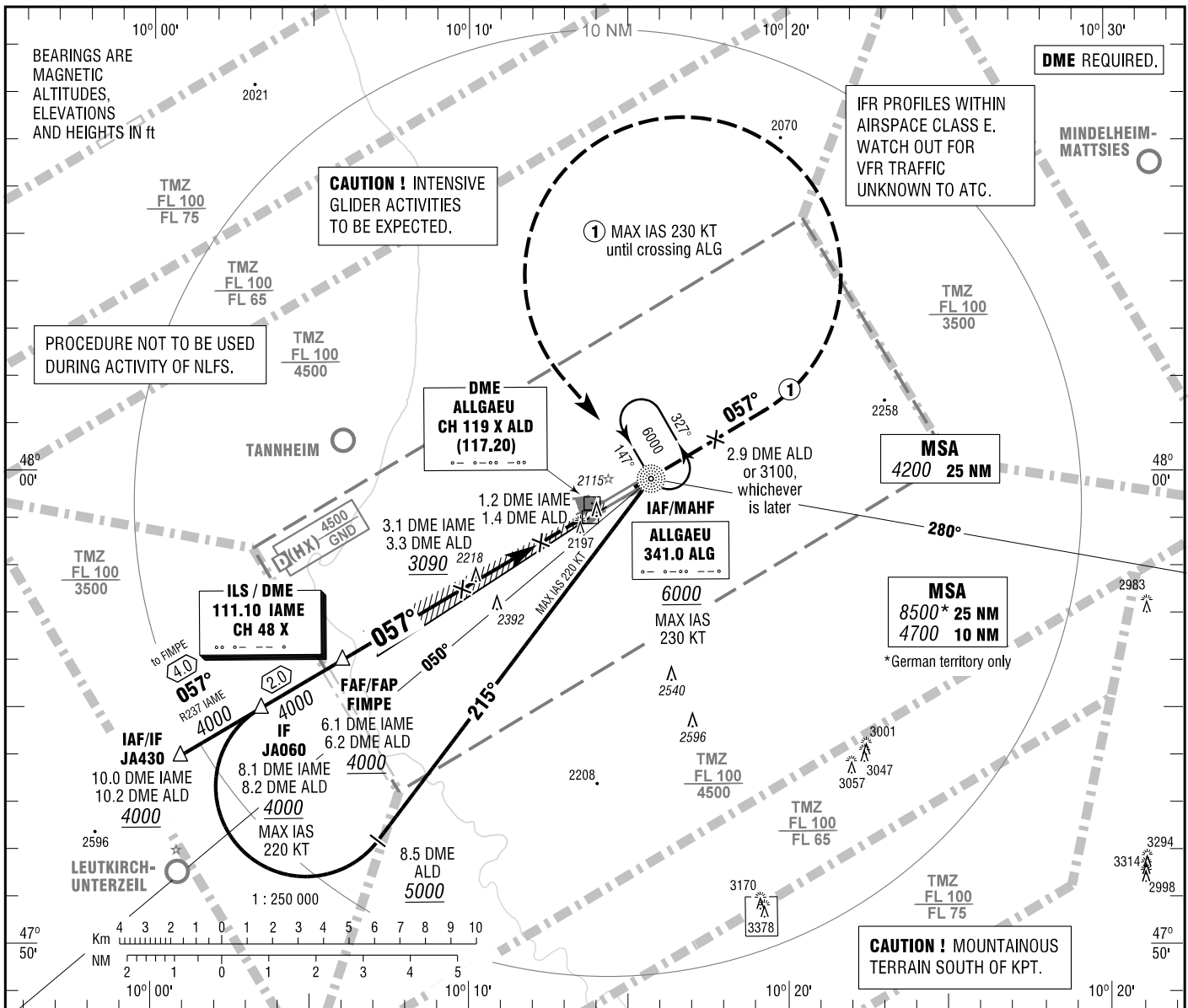


INSTRUMENT
APPROACH
CHART - ICAO

VAR 2° E
ELEV 2079
OCH RELATED TO
THR 06 ELEV 2079

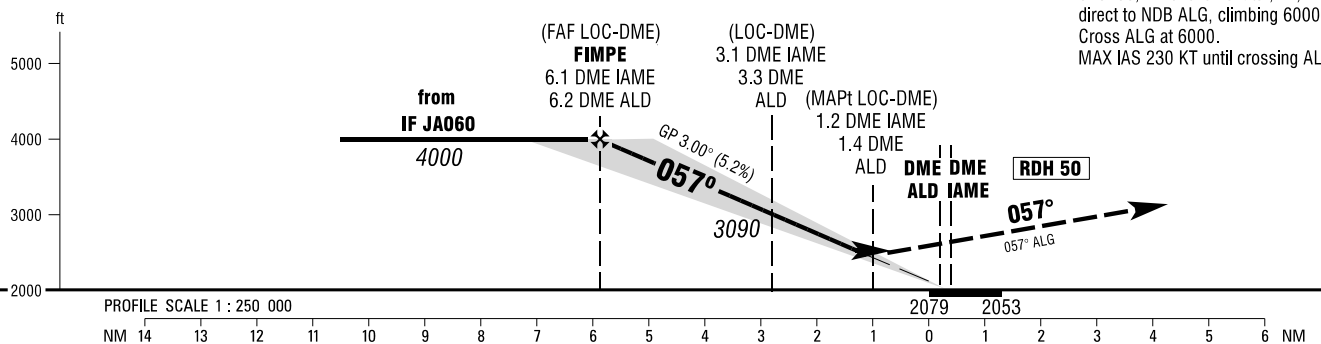
MEMMINGEN ATIS	118.855
MUENCHEN RADAR	129.450
MEMMINGEN TOWER	126.855
MEMMINGEN GROUND	121.680

MEMMINGEN
ILS or LOC
RWY 06



MISSED APPROACH PROCEDURE

On heading 057° to 2.9 DME ALD or 3100, whichever is later; LT, direct to NDB ALG, climbing 6000. Cross ALG at 6000. MAX IAS 230 KT until crossing ALG.



OCA (OCH)	A	B	C	D
ILS/DME CAT I	2247 (168)	2257 (178)	2267 (188)	2276 (197)
LOC-DME	2470 (390)	2470 (390)	2470 (390)	2470 (390)
CIRCLING * OCH RELATED TO AD ELEV	2640 (560)	2690 (610)	2940 (860)	2990 (920)

DME IAME	6	5	4	3	2	1
DIST THR	5.8	4.8	3.8	2.8	1.8	0.8
ALTITUDE	3980	3660	3350	3030	2710	2390

LOC-DME: Timing not authorized for defining the MAPt.

GS	kt	80	100	120	140	160	180
FIMPE - THR (5.9 NM)	MIN:SEC	4:24	3:32	2:56	2:31	2:12	1:58
Rate of descent (5.2%)	ft / MIN	420	530	640	740	850	950

* SOUTHEAST OF AERODROME ONLY

Correction: Communications.