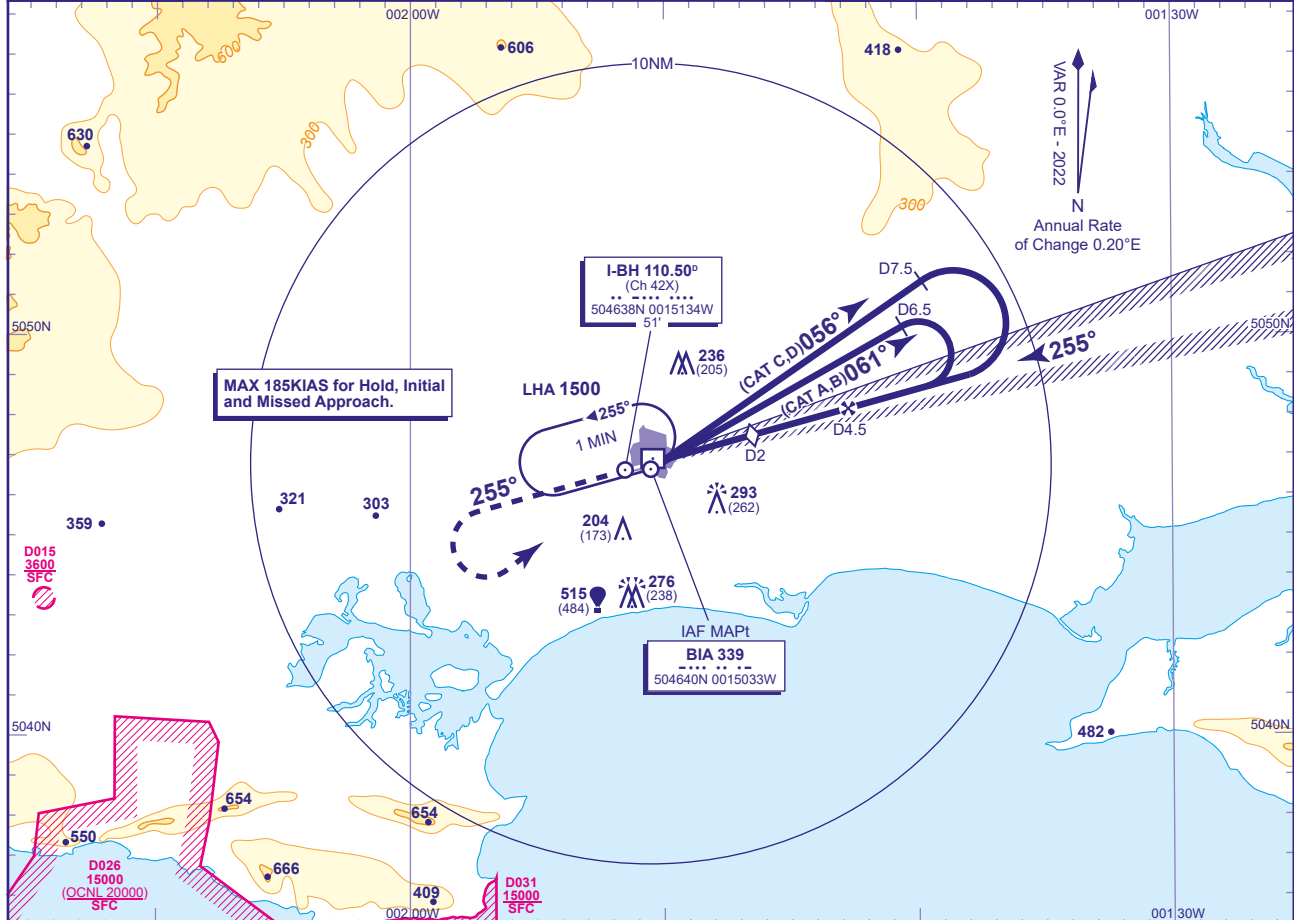


INSTRUMENT APPROACH CHART - ICAO

**BOURNEMOUTH**  
**LOC/DME/NDB(L)**  
**RWY 26**  
(ACFT CAT A,B,C,D)



APP	119.480 (120.230 SOLENT)	BOURNEMOUTH APPROACH	AD ELEVATION	38
TWR	125.605	BOURNEMOUTH TOWER	THR ELEVATION	31
	121.705	BOURNEMOUTH GROUND	OBSTACLE ELEVATION	293 AMSL (262) (ABOVE THR)
RAD	119.480 (118.655 DIRECTOR)	BOURNEMOUTH RADAR		
ATIS	133.730	BOURNEMOUTH INFORMATION	BEARINGS ARE MAGNETIC	TRANSITION ALTITUDE 6000 (See Note 3)

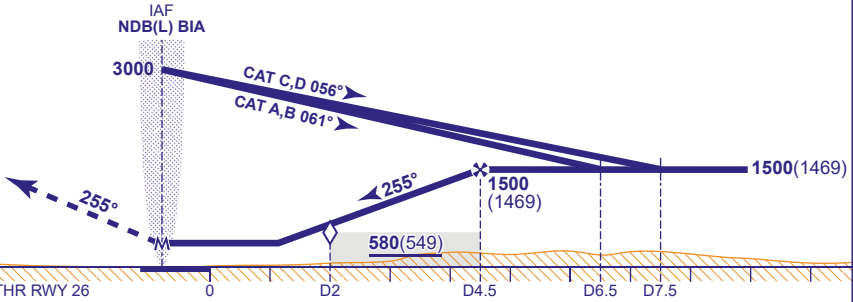


MAX 185KIAS for Hold, Initial and Missed Approach.

**RECOMMENDED PROFILE** Gradient 5.24%, 318FT/NM

DME I-BH	4	3	2 (SDF)	1
ALT(HGT)	1350(1319)	1040(1009)	720(689)	400(369)

**MAPt NDB(L) BIA**  
Continuous climb to 3000. Initially straight ahead to I-BH DME 4 (1500 if no DME) then climbing left turn to NDB(L) BIA to hold at 3000 or as directed.



Aircraft Category	Aircraft Category				Rate of descent	G/S KT FT/MIN	160	140	120	100	80
	A	B	C	D			850	740	640	540	420
OCA (OCH)	WITH DME	380(349)	380(349)	380(349)	380(349)						
	NO DME	630(599)	630(599)	630(599)	630(599)						
VM(C)OCA (OCH AAL)	Total Area	600(562)	600(562)	1000(962)	1000(962)						

**AIRCRAFT UNABLE TO RECEIVE DME I-BH**  
Advise ATC. Fly outbound for 3MIN (CAT A,B) and 2MIN (CAT C,D) prior to base turn right to establish on the LOC. Once established on LOC descend to MDH.  
ATC will provide a radar range equivalent to DME 4 if missed approach is required.

- NOTE**
- 1 Aircraft will normally be required to hold not lower than 3000.
  - 2 This procedure and its associated protection areas are not totally contained within Controlled Airspace.
  - 3 Outside hours of operation of Solent CTA the transition altitude is 3000.

CHANGE (14/20): FREQUENCIES.