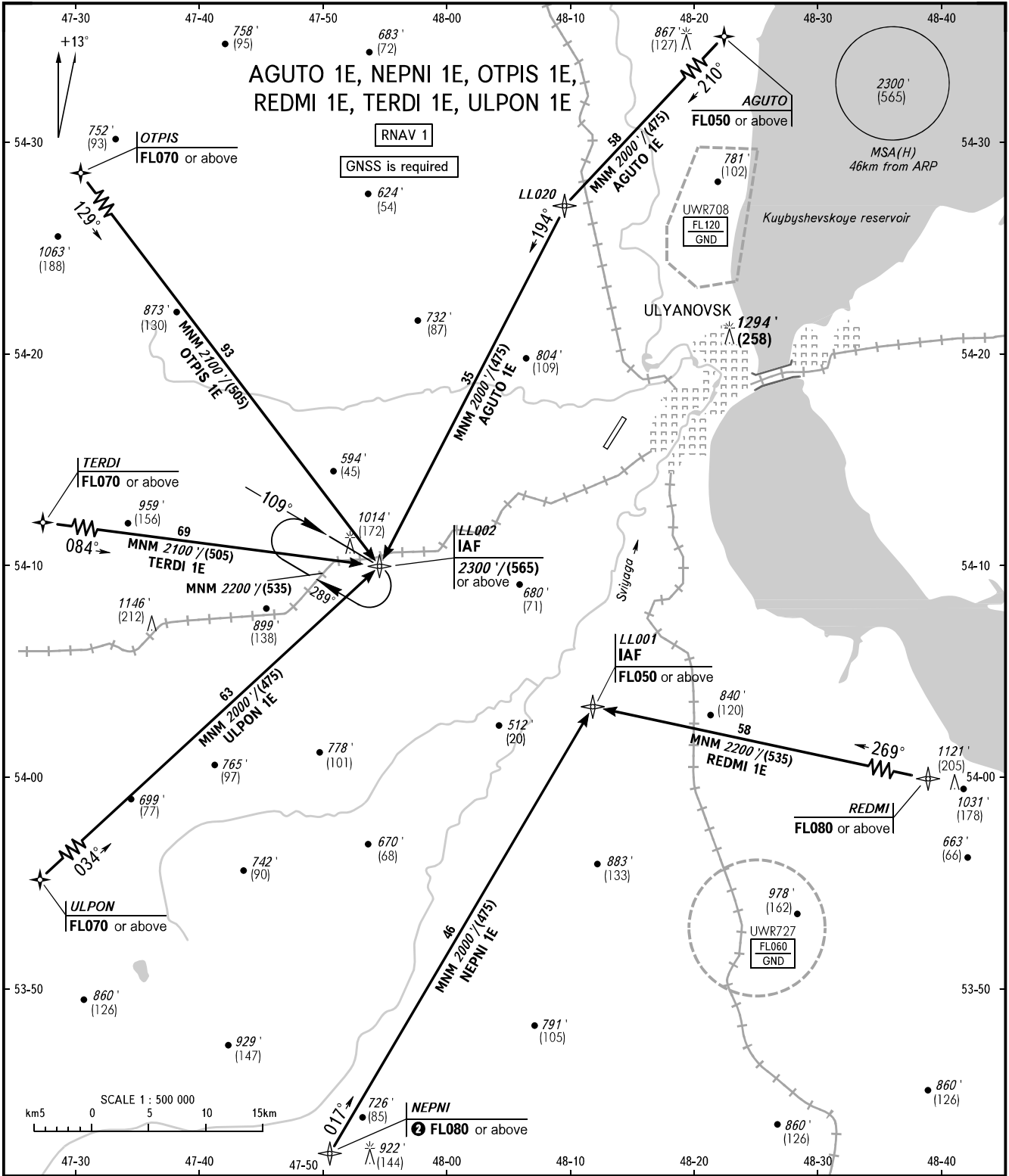


STANDARD ARRIVAL CHART
INSTRUMENT (STAR) - ICAO

ULYANOVSK, RUSSIA
BARATAYEVKA
RNAV RWY 02

TRANSITION
LEVEL: **1**



APPROACH 127.300
RADAR 120.800
START 120.400

- 1** TRANSITION LEVEL:
 - FL050 when QNH is 1013 hPa (760mm mercury column) or above;
 - FL060 when QNH is 977 hPa (733mm mercury column) or above, but less than 1013 hPa (760mm mercury column);
 - FL070 when QNH is less than 977 hPa (733mm mercury column).
- 2** FL070 - by ATC.

BEARINGS AND TRACKS ARE MAGNETIC
ALTITUDES IN FEET
HEIGHTS IN METRES
ELEVATIONS IN FEET AND METRES
DISTANCES IN KILOMETRES

Alt set: -QNH(QFE on req);
-hPa(mm on req).

CHANGE: Heading, HGT