

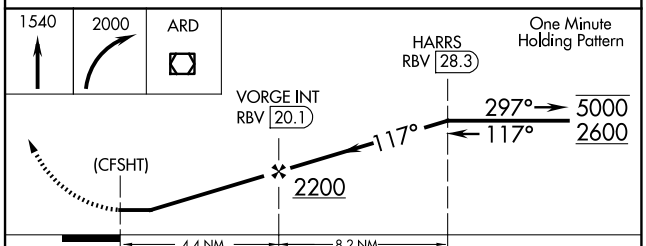
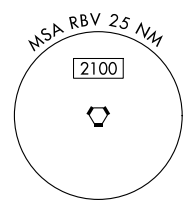
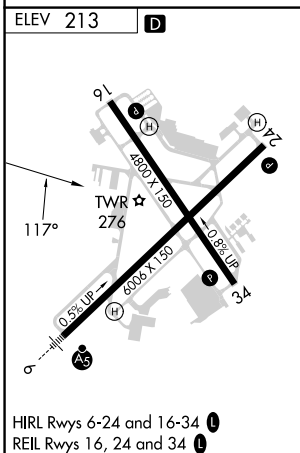
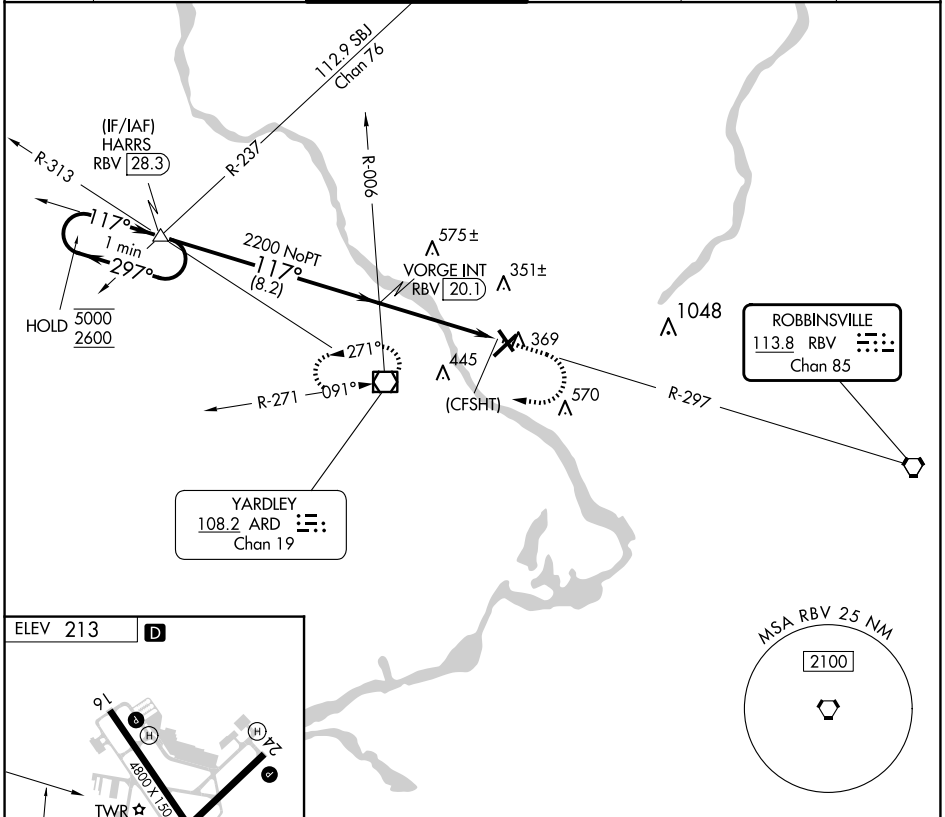
VORTAC RBV 113.8 Chan 85	APP CRS 117°	Rwy Idg TDZE Apt Elev	N/A N/A 213
--	------------------------	-----------------------------	--

VOR-A
TRENTON MERCER (TTN)

▼ Rwy 34 helicopter visibility reduction below 1 SM NA. When Circling to Rwy 34 at night, operational VGSJ required, remain at or above VGSJ glidepath until threshold. When local altimeter setting not received, use PNE altimeter setting and increase all MDAs 60 feet and visibility Cat C/D ¼ SM.

MISSED APPROACH: Climb to 1540 then climbing right turn to 2000 direct ARD VOR/DME and hold.

ATIS 126.775	PHILADELPHIA APP CON 123.8 291.7	TRENTON TOWER ★ 120.7 (CTAF) 257.8	GND CON 121.9 257.8	CLNC DEL 121.9 257.8	UNICOM 122.95
------------------------	--	--	-------------------------------	--------------------------------	-------------------------



FAF to MAP 4.4 NM					
Knots	60	90	120	150	180
Min:Sec	4:24	2:56	2:12	1:46	1:28
CATEGORY	A	B	C	D	
☑ CIRCLING	940-1	727 (800-1)	940-2 727 (800-2)	980-2½ 767 (800-2½)	

NE-2, 20 MAR 2025 to 17 APR 2025

NE-2, 20 MAR 2025 to 17 APR 2025