

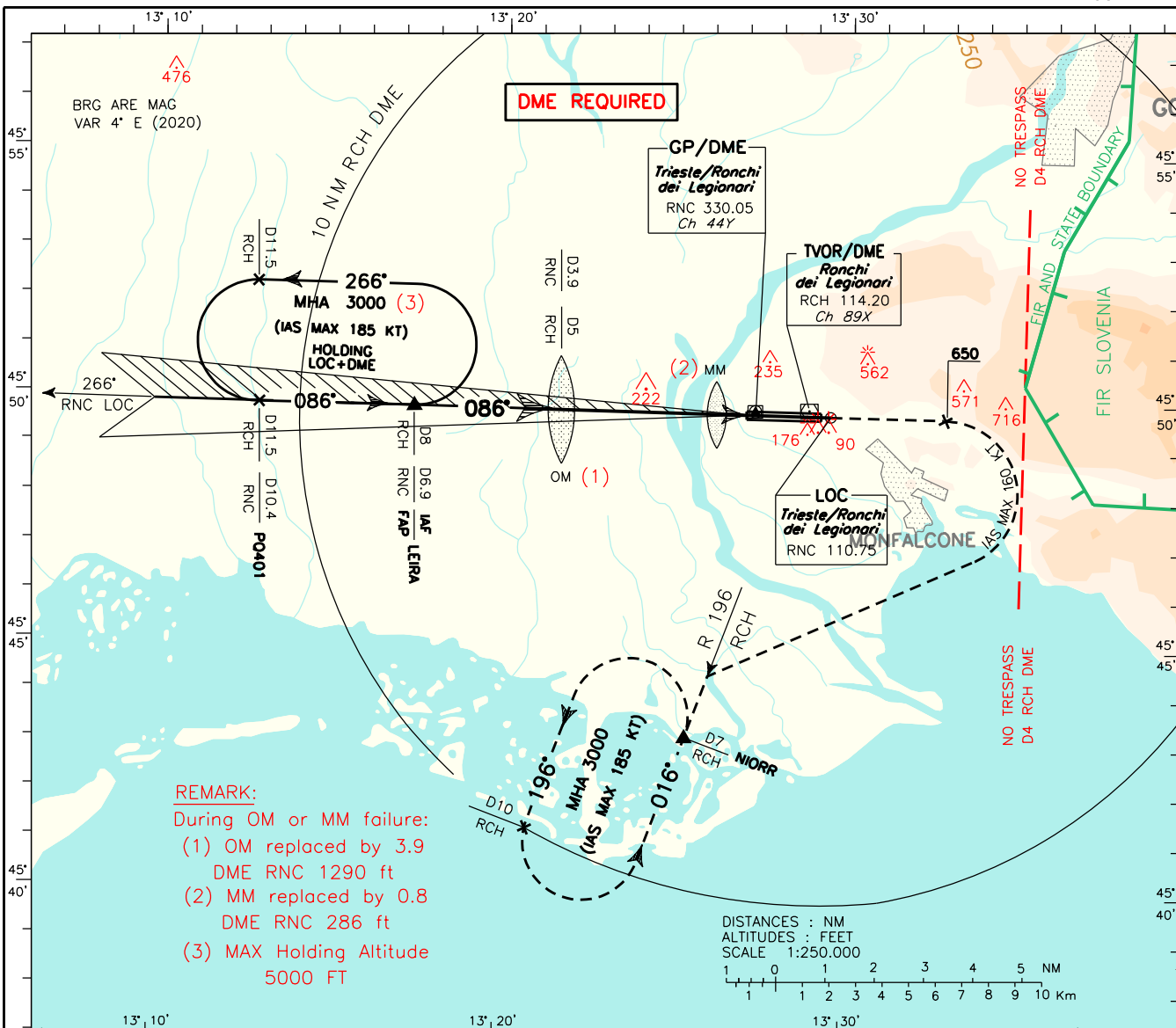
CHANGE: MINIMA OCA (OCH) FOR ILS CAT 2 WITH MNM M.A. CLIMB GRADIENT 3% UPDATED DOC.8168 ED.7 - 2020 - AMDT 10

INSTRUMENT APPROACH CHART - ICAO

AERODROME ELEV **40**

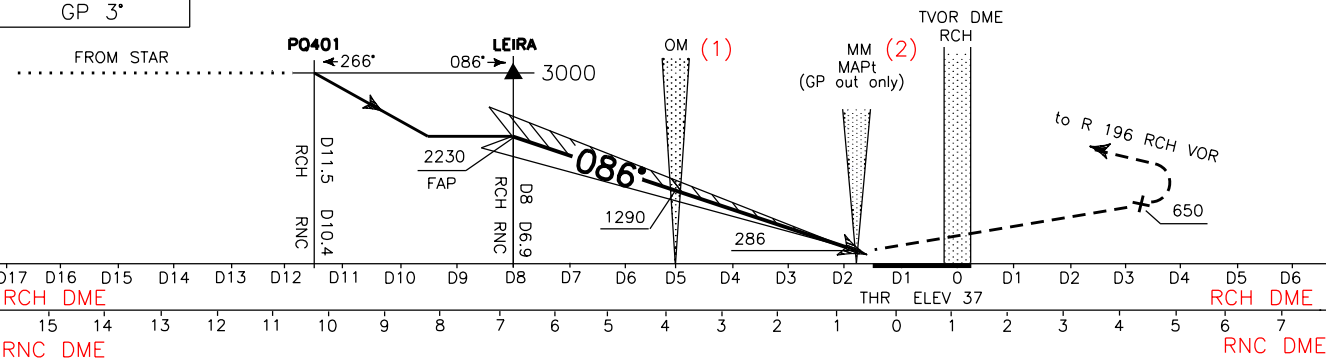
APP Padova Radar **119.175**
TWR Ronchi TWR **130.205**

TRIESTE RONCHI DEI LEGIONARI LIPO
ILS Z RWY 09



TRANSITION ALT 6000
RDH 17 M
GP 3'

MISSED APPROACH: Proceed on track 086° climbing to 3000 ft. Leaving 650 ft turn right (IAS MAX 160 kt during turn) to join and follow RDL 196 RCH VOR bound to NIORR holding pattern. Due to State boundary remain within 4 NM RCH DME during turn. Hold between D7 and D10 RCH DME.



OCA (OCH)		A	B	C	D
STRAIGHT IN APPROACH	M.A. 2.5%	ILS CAT.1 280 (243)	290 (253)	300 (263)	310 (273)
		ILS CAT.2 174 (137)	186 (149)	203 (166)	225 (188)
	M.A. 3%	ILS CAT.1 217 (180)	227 (190)	237 (200)	247 (210)
		ILS CAT.2 103 (66)	115 (78)	132 (95)	154 (117)
GP INOP		480 (440)			
CIRCLING (*)		800 (760)		1170 (1130)	1360 (1320)

(*) CIRCLING SECTOR:
Only South of RWY:
NOT ALLOWED

for CAT C/D ACFT remain within 4 NM RCH DME/ 5.1 NM RNC DME.

FT	GS	OM-MM	MM-THR
PER		3.16 NM	0.60 NM
MIN			
425	80	2 : 22	0 : 27
530	100	1 : 54	0 : 22
635	120	1 : 35	0 : 18
740	140	1 : 21	0 : 15
850	160	1 : 11	0 : 14

