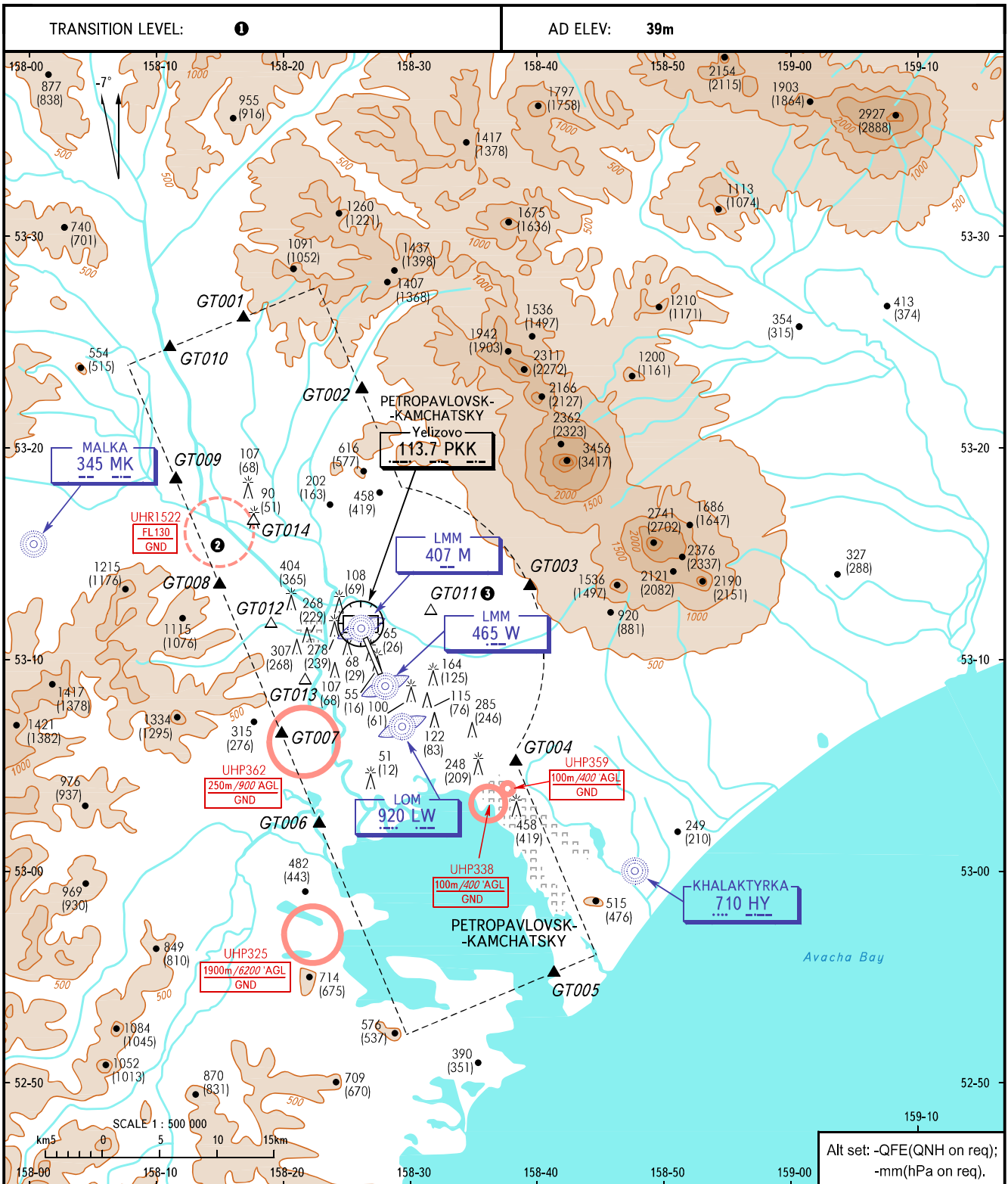


VISUAL
APPROACH
CHART - ICAO

START	118.100
RADAR	119.400

PETROPAVLOVSK-KAMCHATSKY, RUSSIA
YELIZOVO
RWY 16R/34L



WARNING:

② Flights from/to Petropavlovsk-Kamchatsky/Yelizovo AD are permitted at ALT 1500m AMSL or above, except for the periods of blasting operations notified by NOTAM.

③ GT011 - holding point, while expecting clearance to proceed towards ARP. Holding procedure - by ATS unit instructions.

① TRANSITION LEVEL:
- FL090 when QFE is 756mm mercury column or above;
- FL100 when QFE is 729mm mercury column or above, but less than 756mm mercury column;
- FL110 when QFE is less than 729mm mercury column.

CHANGE: UHP359, UHP362