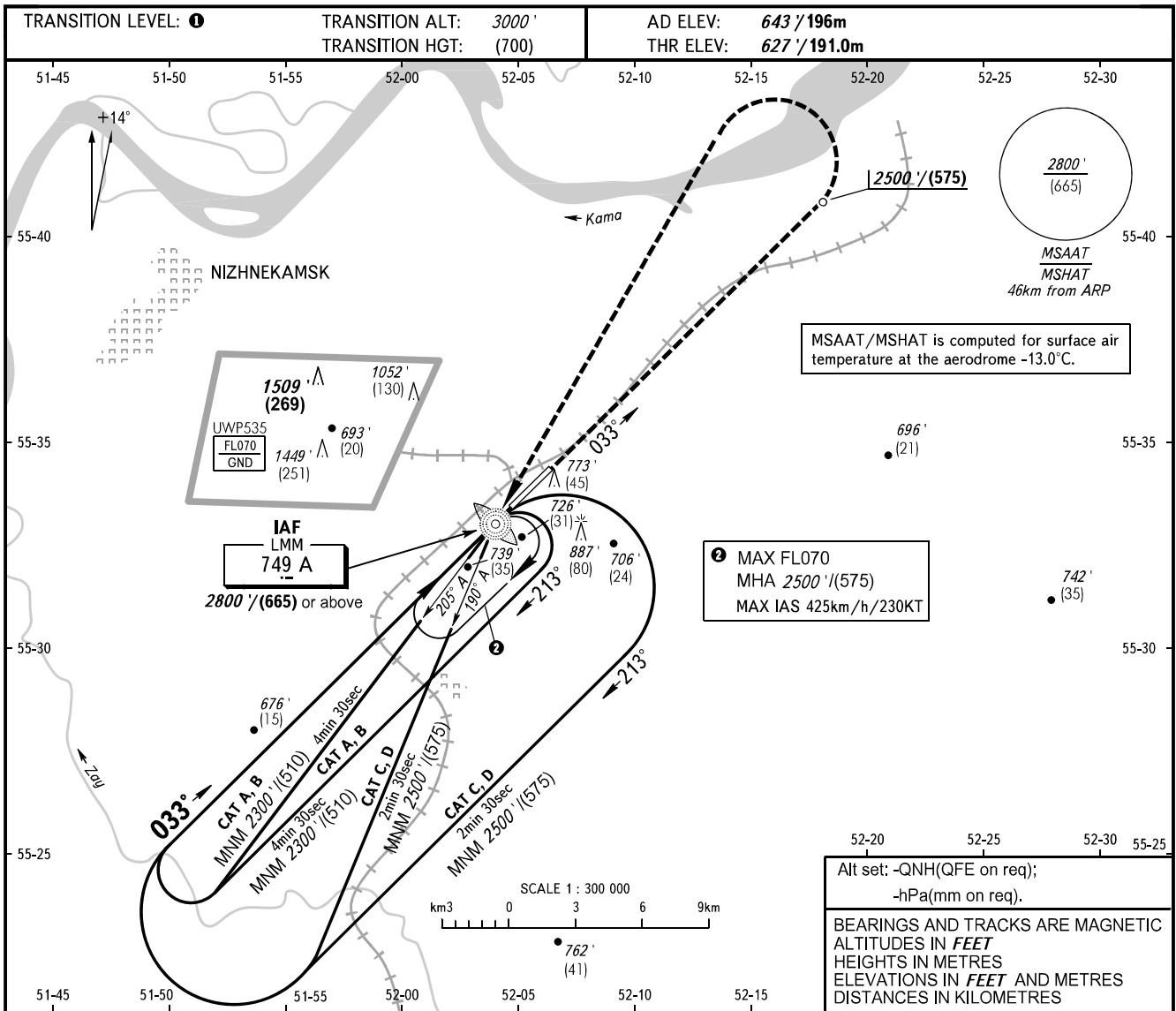


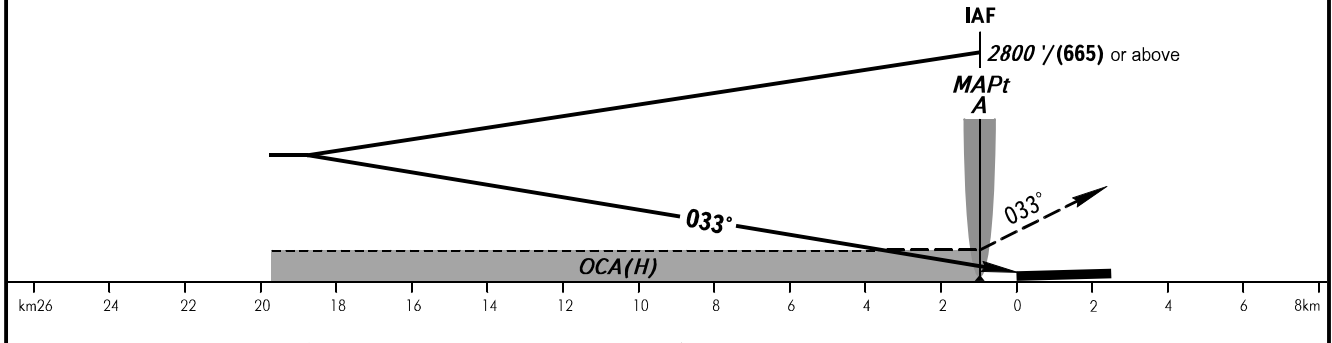
**INSTRUMENT
APPROACH
CHART - ICAO**

RADAR	127.900
TOWER	127.900
START	121.200

NIZHNEKAMSK, RUSSIA
BEGISHEVO
NDB Y RWY 03



MISSED APPROACH
 Climb to 2500' / (575), turn LEFT to IAF LMM A climbing to 2800' / (665) or above, then join holding area or according to chart.



OCA(H)		A	B	C	D
Straight-in Approach		1040' (410') 315 (125)	1040' (410') 315 (125)	1040' (410') 315 (125)	1040' (410') 315 (125)
Circling		1070' (430') 330 (130)	1190' (540') 365 (165)	1290' (640') 395 (195)	1340' (690') 410 (210)

- 1** TRANSITION LEVEL:
 - FL040 when QNH is 1013 hPa (760mm mercury column) or above;
 - FL050 when QNH is 977 hPa (733mm mercury column) or above, but less than 1013 hPa (760mm mercury column);
 - FL060 when QNH is less than 977 hPa (733mm mercury column).
1. MAPt at LMM A.
 2. Visual manoeuvring in sector 228° - 018° is PROHIBITED.

CHANGE: New chart