

HI-TACAN Y RWY 28

TACAN NGU Chan 86Y	APCH CRS 290°	Rwy ldg TDZE Arprt Elev	7375 14 15
------------------------------	-------------------------	-------------------------------	---------------------------------------

[USN]

NORFOLK NS (CHAMBERS FLD) (KNGU)

RADAR required

SSALF

MISSED APPROACH: Climb to 2300 on NGU
TACAN R-277 then as directed by ATC.

▼ * When ALS inop, increase CAT CDE vis to 1 3/8 miles.
** Circling not authorized S of Rwy 10-28.

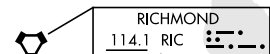
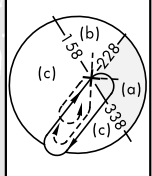


ATIS 118.425 338.225	APP CON 118.9 273.475	CHAMBERS TOWER 124.3 379.15	GND CON 121.8 370.85	ASR/PAR
--------------------------------	---------------------------------	---------------------------------------	--------------------------------	---------

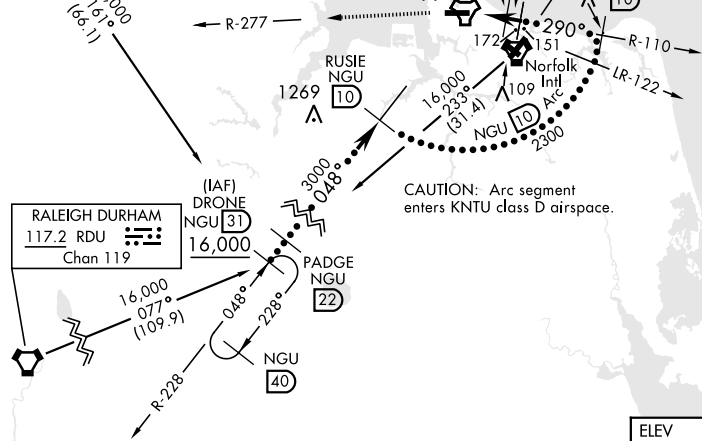
CAUTION:
Do not mistake Norfolk Intl 5 NM SE for
Chambers Fld. Chambers Fld has a single rwy,
Norfolk Intl has int runways.

NORFOLK NS HELIPORT 1 NM NW
Use caution in circling approach.

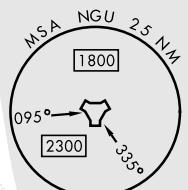
FAC 464 ft from rwy CL
at 3000 ft from thld.



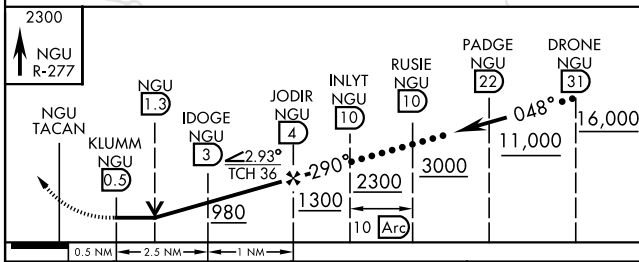
ORF Feeder requires
procedure turn.



CAUTION: Arc segment
enters KNTU class D airspace.



EMERG SAFE ALT 100 NM 4100



CATEGORY	C	D	E
S-28 *	460-1	446	(500-1)
CIRCLING **	540-1 1/2 525 (600-1 1/2)	580-2	565 (600-2)

ELEV	15	TDZE	14
------	----	------	----

Rwy 10 ldg 8071'
Rwy 28 ldg 7375'

HIRL Rwy 10-28
REIL Rwy 10-28
TDZL/CL Rwy 10-28

HI-TACAN Y RWY 28

NE-3, 20 MAR 2025 to 17 APR 2025

NE-3, 20 MAR 2025 to 17 APR 2025