

STANDARD ARRIVAL CHART - INSTRUMENT

ZGGG GUANGZHOU/Baiyun

D-ATIS(Chinese) 127.0 RNAV RWY01L/01R/02L/02R/19L/19R/20L/20R (IDUMA)
 VAR3.0°W D-ATIS(English) 128.6

BEARINGS ARE MAGNETIC.
 ALTITUDES, ELEVATIONS
 AND HEIGHTS IN METERS.
 DME DISTANCES IN
 NAUTICAL MILES.
 DISTANCES IN KM.

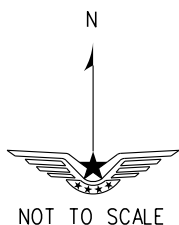
TL 3300(QNH ≥ 980hPa)
 3600(QNH < 980hPa)
 TA 2700

TWR(01L/19R) 118.325(118.875)
 TWR(01R/19L) 118.8(118.875)
 TWR(02L/20R) 118.1(118.875)
 TWR(02R/20L) 118.25(118.875)

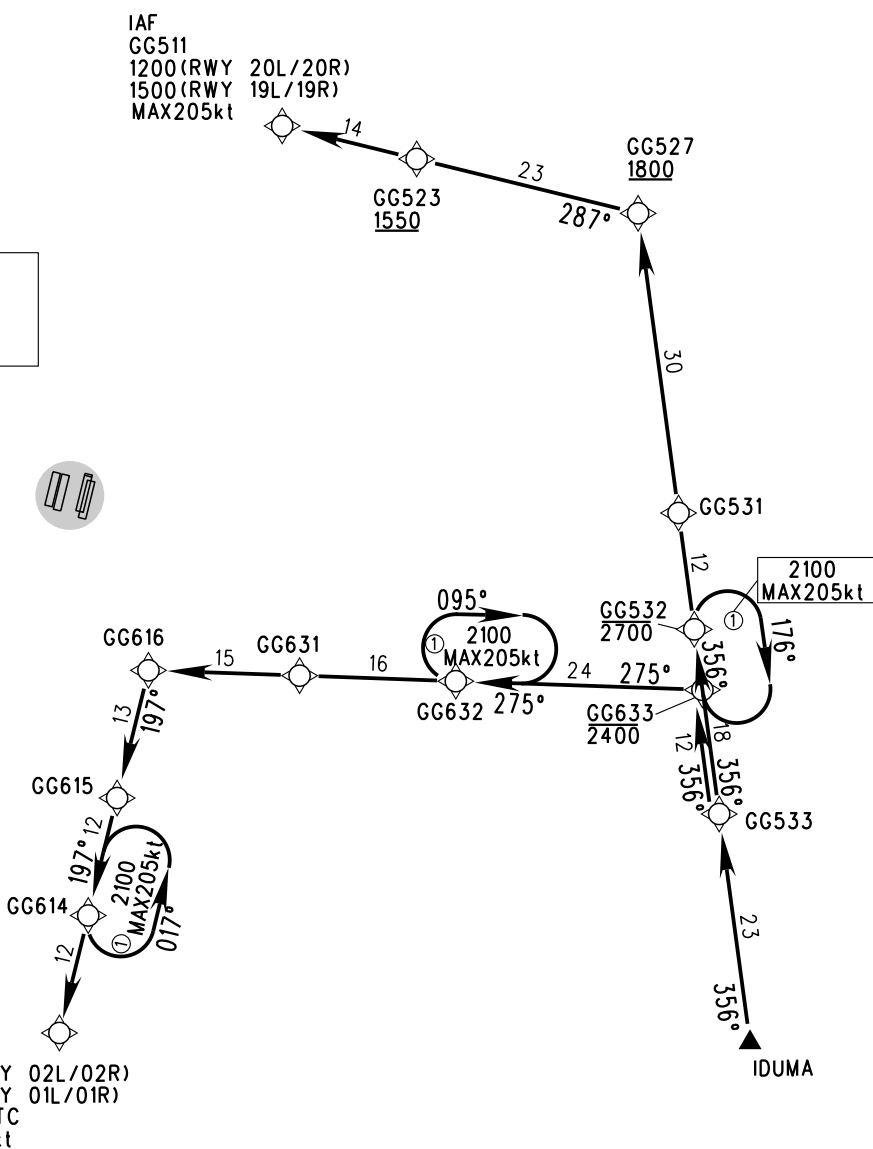
IDUMA-1

APP01 126.55(127.75)
 APP02 119.7(127.75)
 APP03 126.35(119.6)
 APP04 121.05(124.2)
 APP05 120.4(124.2)
 APP06 121.175(127.75)

Note:
 While independent operation implemented, actual flight ALT instructed by ATC.



RNAV1	or
GNSS	RNP1
or DME/DME/IRU	GNSS
RADAR REQUIRED	



RWY	STAR	ROUTING
01R,01L	IDUMA-1	IDUMA-GG533-GG633-GG632-GG631-GG616-GG615-GG614-GG611
02L,02R		
19R,19L		
20R,20L		IDUMA-GG533-GG532-GG531-GG527-GG523-GG511

Changes: New chart.