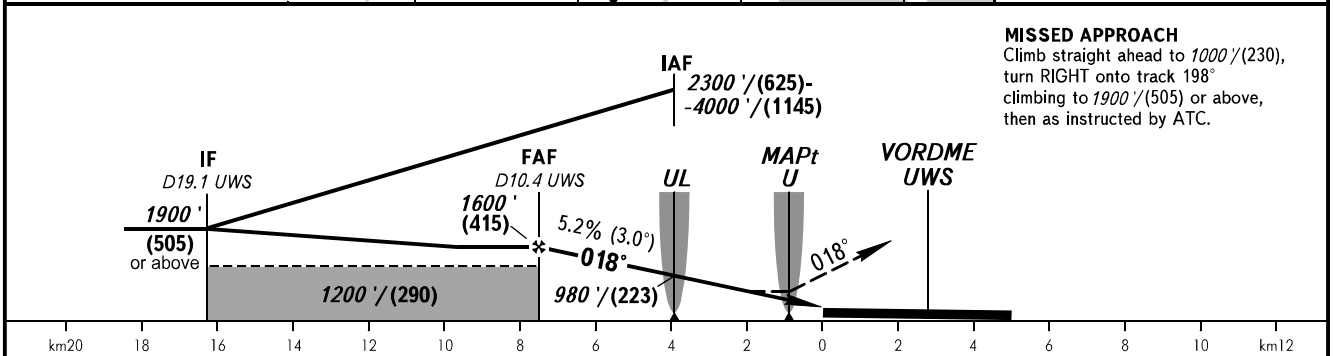
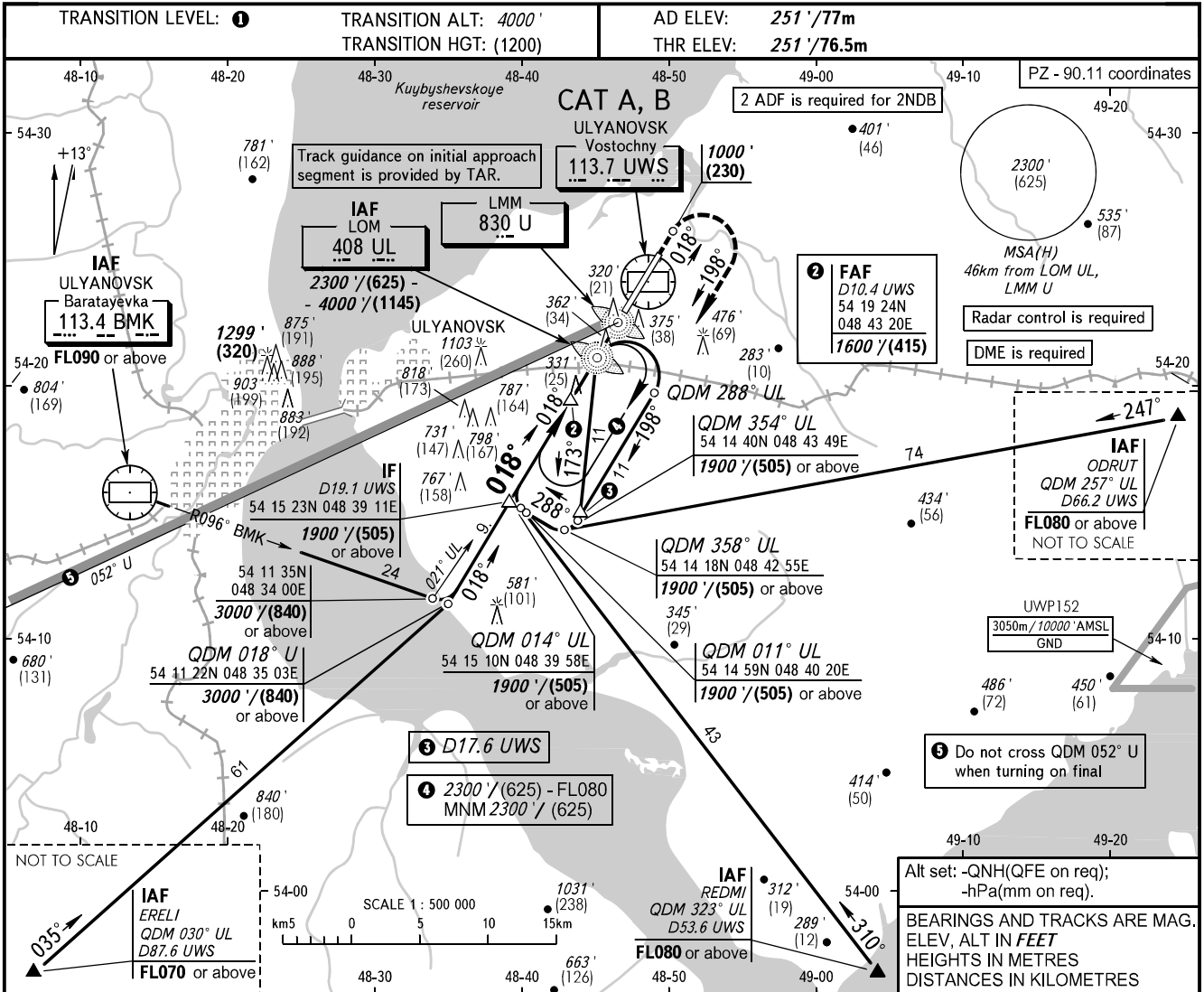


**INSTRUMENT
APPROACH
CHART - ICAO**

**ULYANOVSK, RUSSIA
VOSTOCHNY
2 NDB Y, NDB Y RWY 02**

VOSTOCHNY TOWER 124.200



OCA(H)		A	B							
Straight-in Approach	2 NDB	with FAF	610' (360') / (110)	610' (360') / (110)						
		WO FAF	1260' (1010') / (310)	1260' (1010') / (310)						
	NDB	with FAF	630' (380') / (120)	630' (380') / (120)						
		WO FAF	970' (720') / (220)	970' (720') / (220)						
Circling		680' (420') / (135)	750' (500') / (155)							
GROUND SPEED	km/h	150	180	210	240	270	300	330	360	390
	kt	81	97	113	130	146	162	178	194	211
RATE OF DESCENT	m/s	2.2	2.6	3.0	3.5	3.9	4.3	4.8	5.2	5.6
	ft/min	427	512	597	682	768	853	938	1024	1109

MISSED APPROACH
Climb straight ahead to 1000' / (230), turn RIGHT onto track 198° climbing to 1900' / (505) or above, then as instructed by ATC.

Alt set: -QNH(QFE on req);
-hPa(mm on req).
BEARINGS AND TRACKS ARE MAG.
ELEV, ALT IN FEET
HEIGHTS IN METRES
DISTANCES IN KILOMETRES

1 TRANSITION LEVEL:
- FL050 when QNH is 977 hPa (733mm mercury column) or above;
- FL060 when QNH is less than 977 hPa (733mm mercury column).
WARNING
Visual manoeuvring north-west of the aerodrome is PROHIBITED.