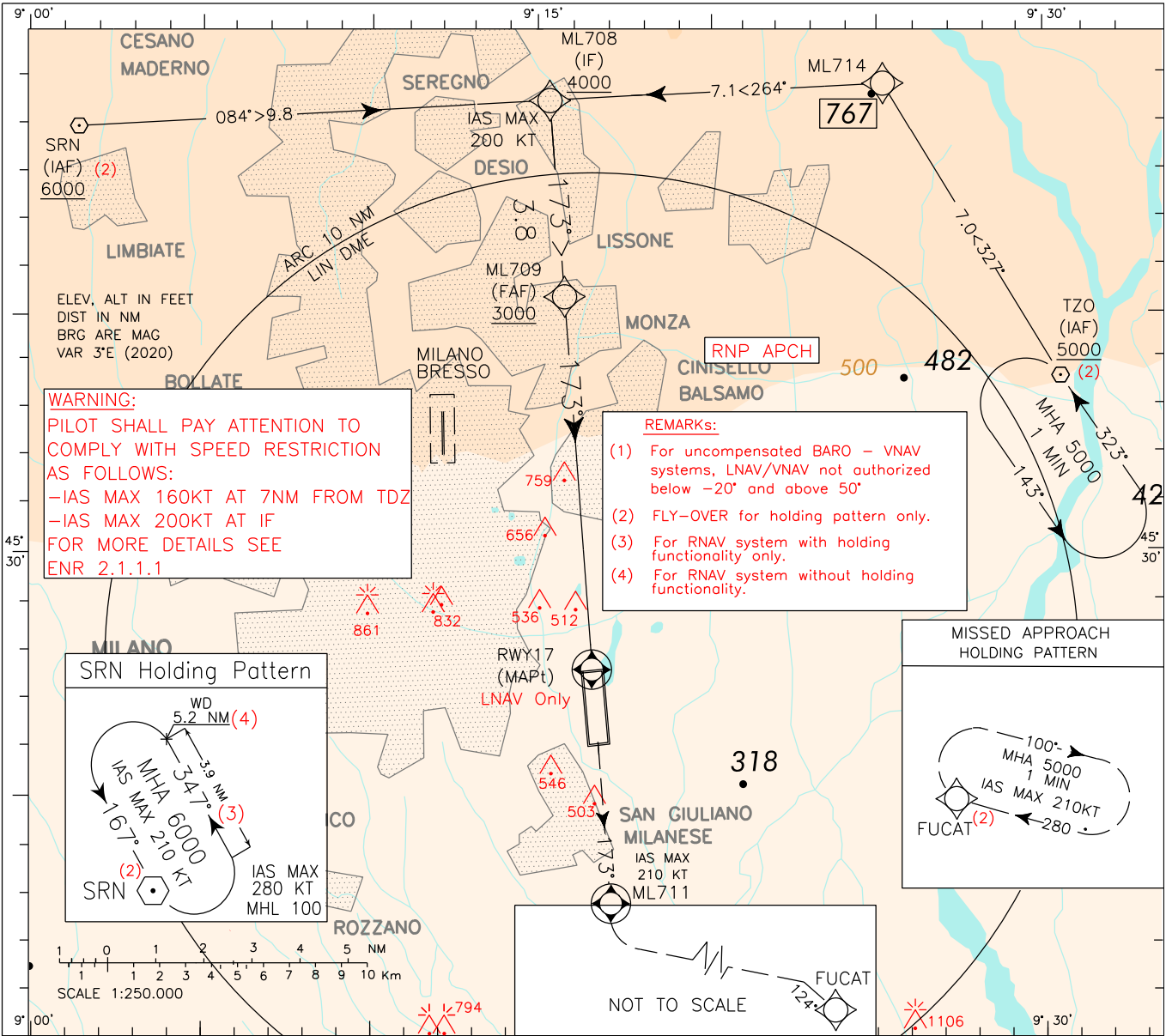


INSTRUMENT APPROACH CHART - ICAO EGNOS CH 46177 AERODROME ELEV 353 APP Milano Radar MILANO/Linate (LIML) CH 133.180 TWR Linate TWR 118.100 (118.400) RNP RWY17 ATIS Linate Terminal Information 136.375

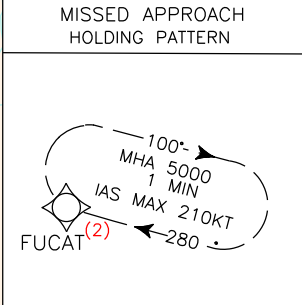
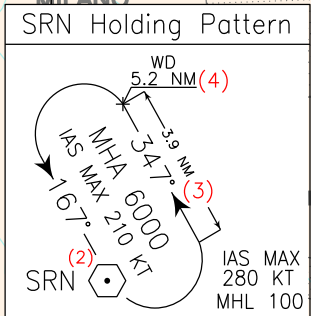
DOC. 8168 - ED.7 2020

CHANGE: RNAV HOLDING OVER FUCAT, SRN AND TZO IMPLEMENTED.

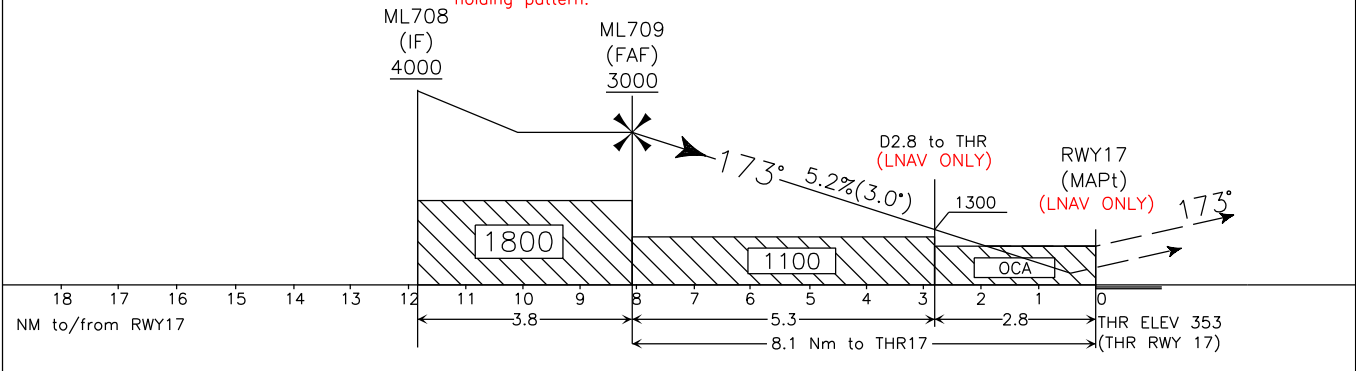


**WARNING:**  
 PILOT SHALL PAY ATTENTION TO COMPLY WITH SPEED RESTRICTION AS FOLLOWS:  
 -IAS MAX 160KT AT 7NM FROM TDZ  
 -IAS MAX 200KT AT IF  
 FOR MORE DETAILS SEE ENR 2.1.1.1

**REMARKS:**  
 (1) For uncompensated BARO - VNAV systems, LNAV/VNAV not authorized below -20° and above 50°  
 (2) FLY-OVER for holding pattern only.  
 (3) For RNAV system with holding functionality only.  
 (4) For RNAV system without holding functionality.



TRANSITION ALT 6000 MISSED APPROACH: Climbing to 5000 Ft continue on course 173° to ML711 then turn left (IAS MAX 210 kt) on course 124° inbound to FUCAT to join missed approach holding pattern.  
 TCH 15 M **REMARK:** (5) Missed approach obstacles clearance is provided by 2.5% gradient. 3.5% (213ft/NM) is required to remain inside vertical limits of controlled airspace while proceeding to missed approach holding pattern.



OCA (OCH)		A	B	C	D	CIRCLING SECTORS	GS	FT PER MIN	FAF-THR 8.1NM	DIST FROM THR	ALT (HGT)	MNM SECT ALT 25NM	ARP
STRAIGHT IN APPROACH	LPV	670 (317)	680 (327)	690 (337)	700 (347)								
	LNAV/VNAV	690 (337)	700 (347)	710 (357)	720 (367)		80	421	6:07	6NM	2310 (1957)		
	LNAV	800 (447)					100	527	4:53	5NM	1990 (1637)		
	CIRCLING (EAST OF RWY)	900 (547)		1200 (847)			120	632	4:05	4NM	1675 (1332)		
							140	737	3:30	3NM	1335 (1003)		
						160	842	3:03	2NM	1040 (685)			
						180	948	2:43	1NM	720 (367)			