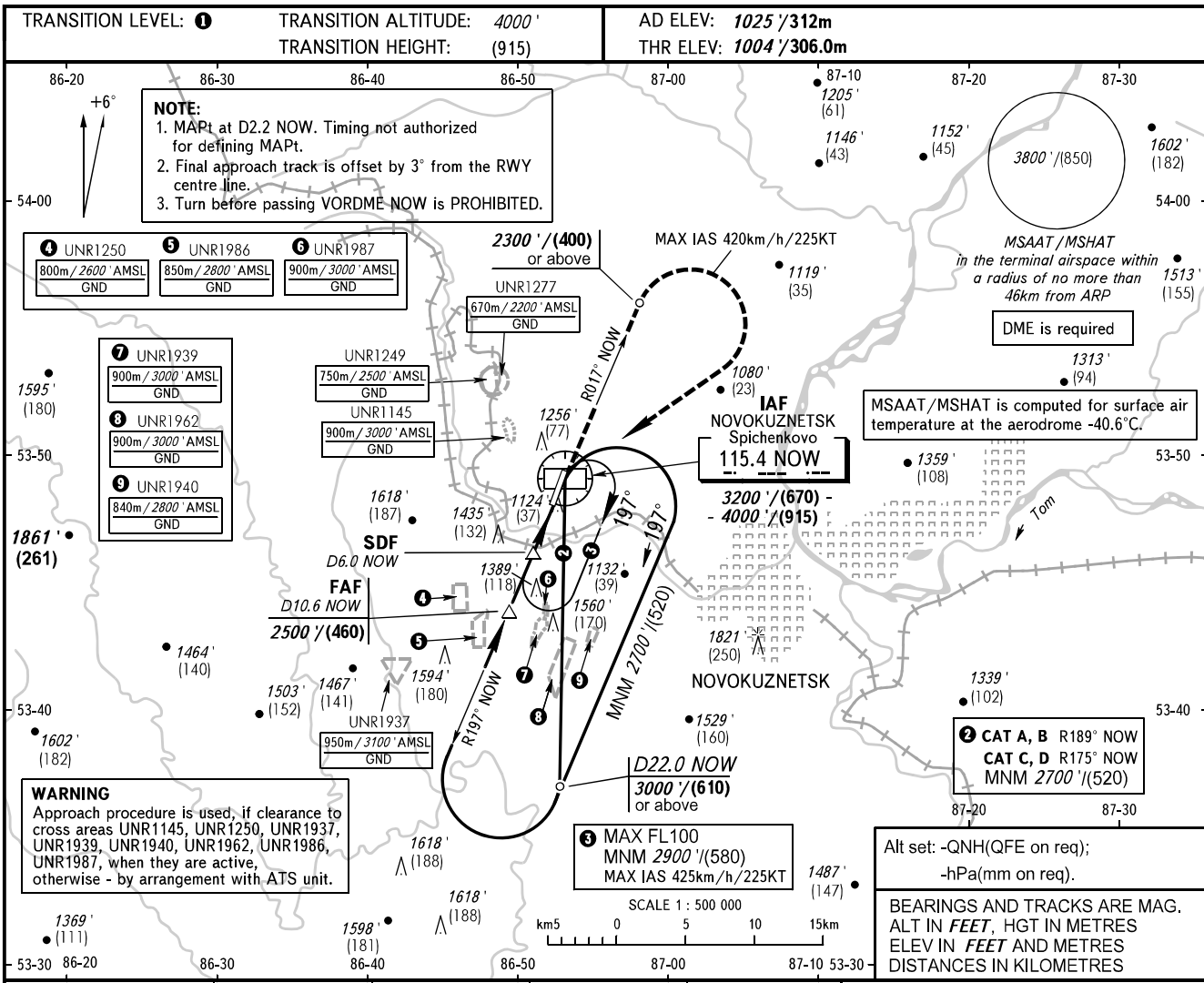


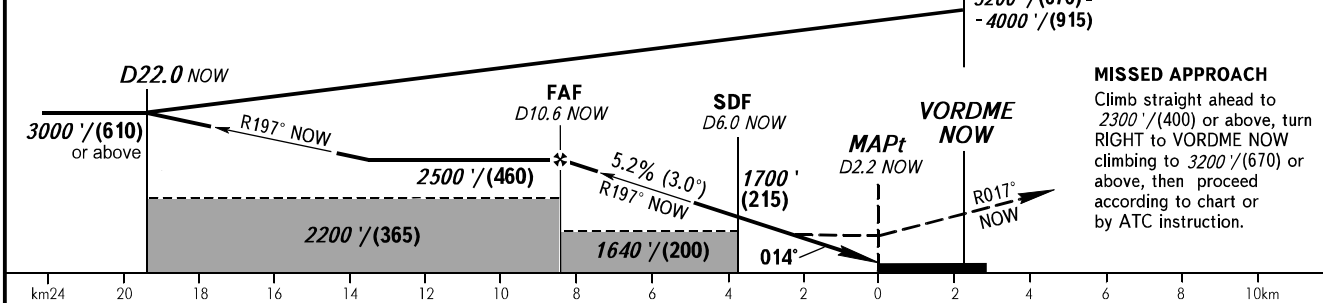
**INSTRUMENT  
APPROACH  
CHART - ICAO**

**NOVOKUZNETSK, RUSSIA  
SPICHENKOVO  
VOR RWY 01**

APPROACH **118.600**  
START **121.200**



DME NOW	10.6	8.0	6.0	4.0
ALTITUDE/HEIGHT	2500' / (460)	2060' / (325)	1700' / (215)	1370' / (115)



OCA(H)		A	B	C	D
Straight-in Approach	With SDF	1370' (370') (115)	1370' (370') (115)	1370' (370') (115)	1370' (370') (115)
	WO SDF	1640' (640') (200)	1640' (640') (200)	1640' (640') (200)	1640' (640') (200)
Circling		1640' (640') (200)	1740' (710') (220)	1830' (810') (255)	1960' (940') (295)

GROUND SPEED	km/h	150	180	210	240	270	300	330	360
	kt	81	97	113	130	146	162	178	195
RATE OF DESCENT	m/s	2.2	2.6	3.1	3.5	3.9	4.4	4.8	5.2
	ft/min	433	512	610	689	768	866	945	1024

CHANGE: New chart

**1** TRANSITION LEVEL:  
- FL050 when QNH is 1013 hPa (760mm mercury column) or above;  
- FL060 when QNH is 977 hPa (733mm mercury column) or above, but less than 1013 hPa (760mm mercury column);  
- FL070 when QNH is less than 977 hPa (733mm mercury column).