

INSTRUMENT APPROACH CHART - ICAO

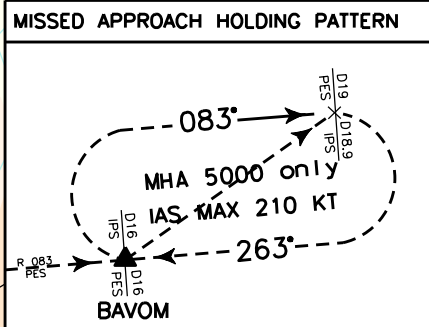
AERODROME ELEV 48

APP Pescara APP 120.050
TWR Pescara TWR 118.450

PESCARA (LIBP)
ILS or LOC Y RWY22

DOC. 8168 - ED.6 2014 - AMDT. 8

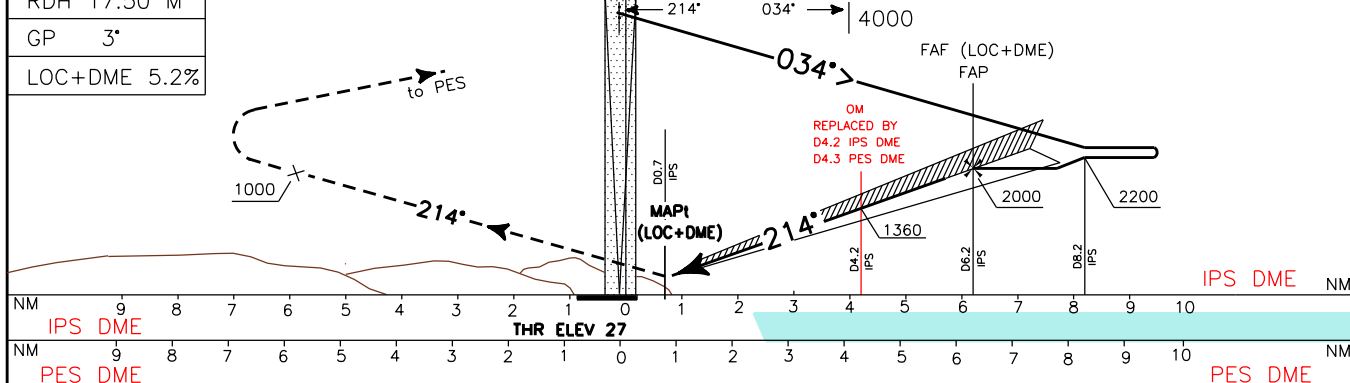
CHANGE: REPRINTING



TRANSITION ALT 6000

MISSED APPROACH: Proceed on TR 214° and climb to 5000 ft. Passing 1000 ft, not before 3.1 NM after IPS DME (or 3.0 NM after PES DME) turn right (IAS MAX 180kt) to PES VOR to leave on RDL 083 bound to BAVOM. First M.A. right turn restricted to 180 KT IAS MAX.

RDH 17.50 M
GP 3°
LOC+DME 5.2%



STRAIGHT IN APPROACH	OCA (OCH)				CIRCLING SECTOR	IPS DIST	ALT(HGT)	FT PER MIN	GS	FAF-00.7 5.5 NM	MNM SECT ALT	
	A	B	C	D							PES	VOR/DME
ILS	245 (218)	253 (226)	261 (234)	272 (245)		5DME	1620(1593)	425	80	4 : 08		
LOC+DME	500 (473)					4DME	1300(1237)	530	100	3 : 18		
						3DME	980(953)	635	120	2 : 45		
					2DME	660(633)	745	140	2 : 21			
CIRCLING	1100 (1052)	1200 (1152)	1300 (1252)		1DME	340(313)	850	160	2 : 04			