

HI-ILS or LOC Z RWY 16

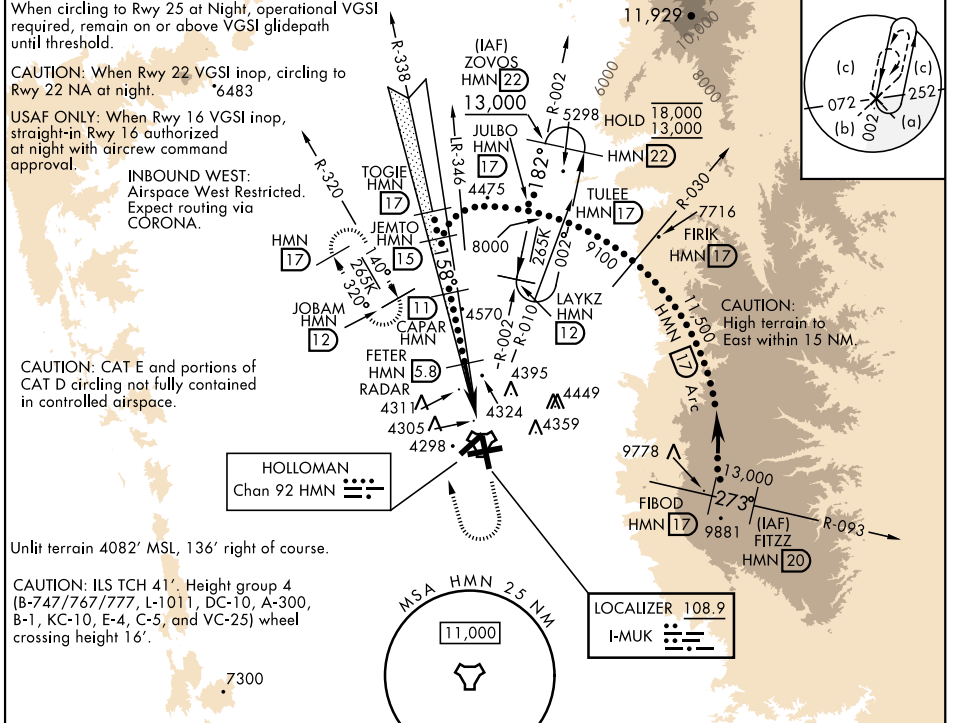
LOC I-MUK 108.9	APCH CRS 158°	Rwy ldg 12,134 TDZE 4083 Arprt Elev 4093
---------------------------	-------------------------	---

[USAF]

HOLLOMAN AFB (KHMM)

RADAR or DME required.		ALSIF-1 	MISSED APPROACH: Climb straight ahead to 7000, passing 5000 turn right and intercept HMN R-320 outbound to JOBAM and hold.
------------------------	--	-------------	--

ATIS ★ 273.5	ALBUQUERQUE CENTER 132.65 257.6	APP CON 120.6 269.225	TOWER ★ 119.3 254.4	GND CON 127.05 275.8	CLNC DEL 126.7 289.4
------------------------	---	---------------------------------	-------------------------------	--------------------------------	--------------------------------



SW-1, 20 MAR 2025 to 17 APR 2025

SW-1, 20 MAR 2025 to 17 APR 2025

EMERG SAFE ALT 100 NM 14,200		ELEV 4093		TDZE 4083												
VGSI and ILS glidepath not coincident (VGSI angle 3.00/TCH 50).		5000	7000	7000												
CATEGORY	C	D	E													
S-ILS 16 *	4283-½	200 (200-½)														
S-LOC 16 **	4600-1	517 (600-1)														
CIRCLING	5200-3	1107 (1200-3)	5300-3 (1300-3)													
HIRL all rwys		FAF to MAP 5.0 NM														
REIL Rwy 22		<table border="1"> <tr> <td>Knots</td> <td>120</td> <td>140</td> <td>160</td> <td>180</td> <td>200</td> </tr> <tr> <td>Min:Sec</td> <td>2:30</td> <td>2:09</td> <td>1:53</td> <td>1:40</td> <td>1:30</td> </tr> </table>			Knots	120	140	160	180	200	Min:Sec	2:30	2:09	1:53	1:40	1:30
Knots	120	140	160	180	200											
Min:Sec	2:30	2:09	1:53	1:40	1:30											

HI-ILS or LOC Z RWY 16