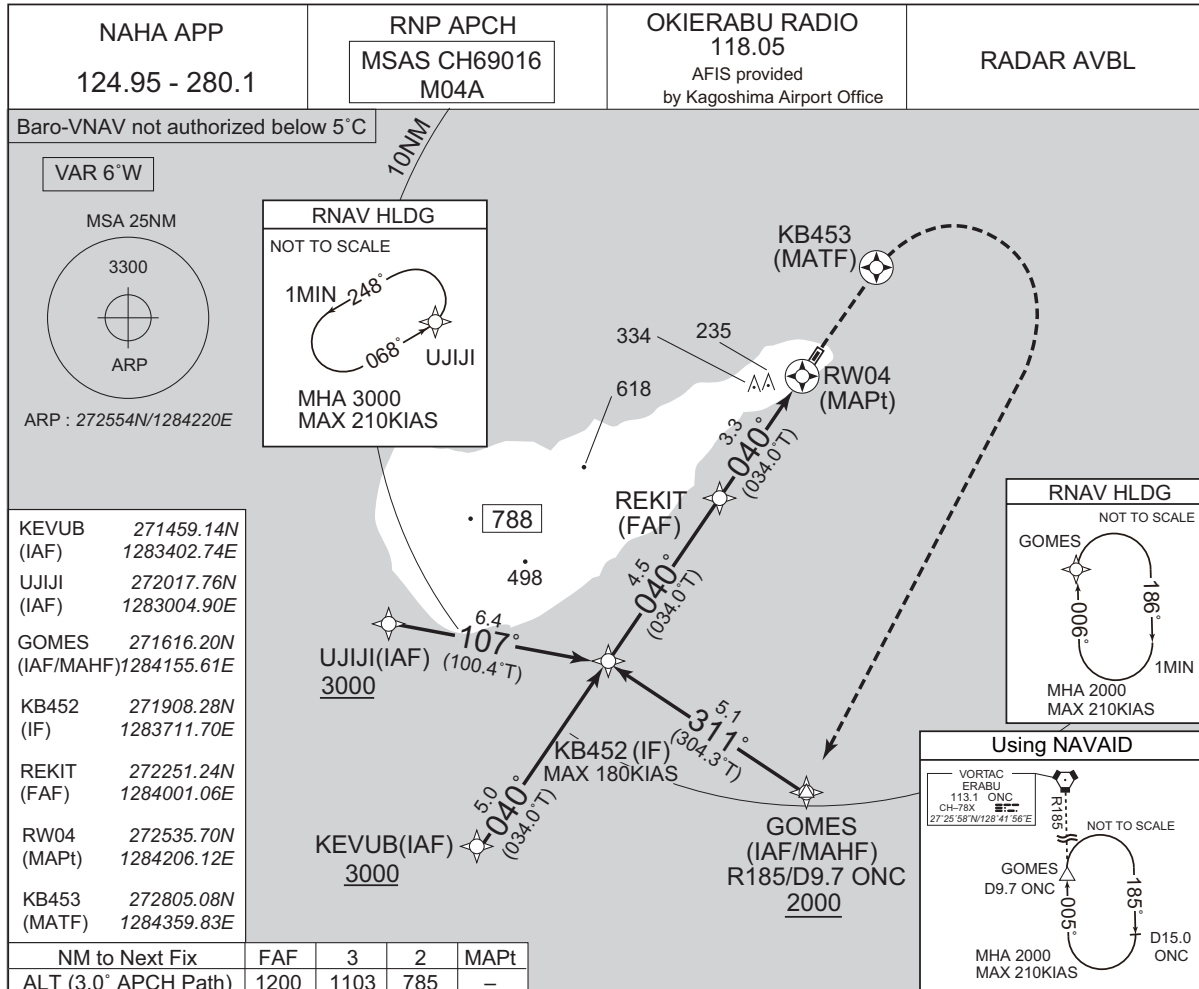


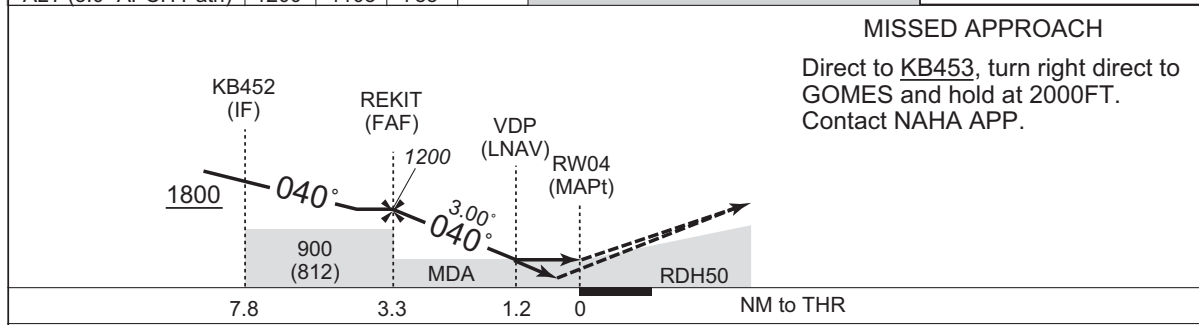
INSTRUMENT APPROACH CHART

RJKB / OKIERABU

RNP RWY04



CHANGE : PROC course. KEVUB, REKIT, KB452, KB453 established. KB450, KB451, RAGON abolished. MSAS CH added. MNM temperature for Baro-VNAV. Missed APCH for using VORTAC abolished. Missed APCH climb gradient MNM established. THR elev. MINIMA for LPV established. MINIMA for LPV established. MINIMA for LNAV/VNAV.



Missed APCH climb gradient MNM 5.0%

MINIMA		THR elev. 99		AD elev. 88				
CAT	LPV		LNAV/VNAV		LNAV		CIRCLING	
	DA(H)	CMV	DA(H)	CMV	MDA(H)	CMV	MDA(H)	VIS
A	366 (267)	1500	404 (305)	1500	500 (412)	1500	500 (412)	1600
B	376 (277)						540 (452)	
C	386 (287)	1600		1800		1800	540 (452)	2400
D	-	-	-	-	-	-	-	-

MINIMA with Missed APCH climb gradient of 2.5% are not established. Circling to EAST side of RWY only.

INSTRUMENT APPROACH CHART

RJKB / OKIERABU

RNP RWY04

FAS DATA BLOCK

Operation type	0	LTP/FTP ellipsoidal height	+00608
SBAS service provider identifier	2	FPAP latitude	272621.2280N
Airport identifier	RJKB	FPAP longitude	1284240.8210E
Runway	04	Threshold crossing height	00015.0
Approach performance designator	0	TCH units selector	1
Route indicator		Glide path angle	03.00
Reference path data selector	0	Course width at threshold	105.00
Reference path ID	M04A	∠ length offset	0344
LTP/FTP latitude	272535.6665N	HAL	40.0
LTP/FTP longitude	1284206.1585E	VAL	50.0
CRC remainder	78273A92		

Required additional data

LTP/FTP orthometric height	30.1
----------------------------	------

CHANGE : FAS DATA BLOCK and Required additional data established.