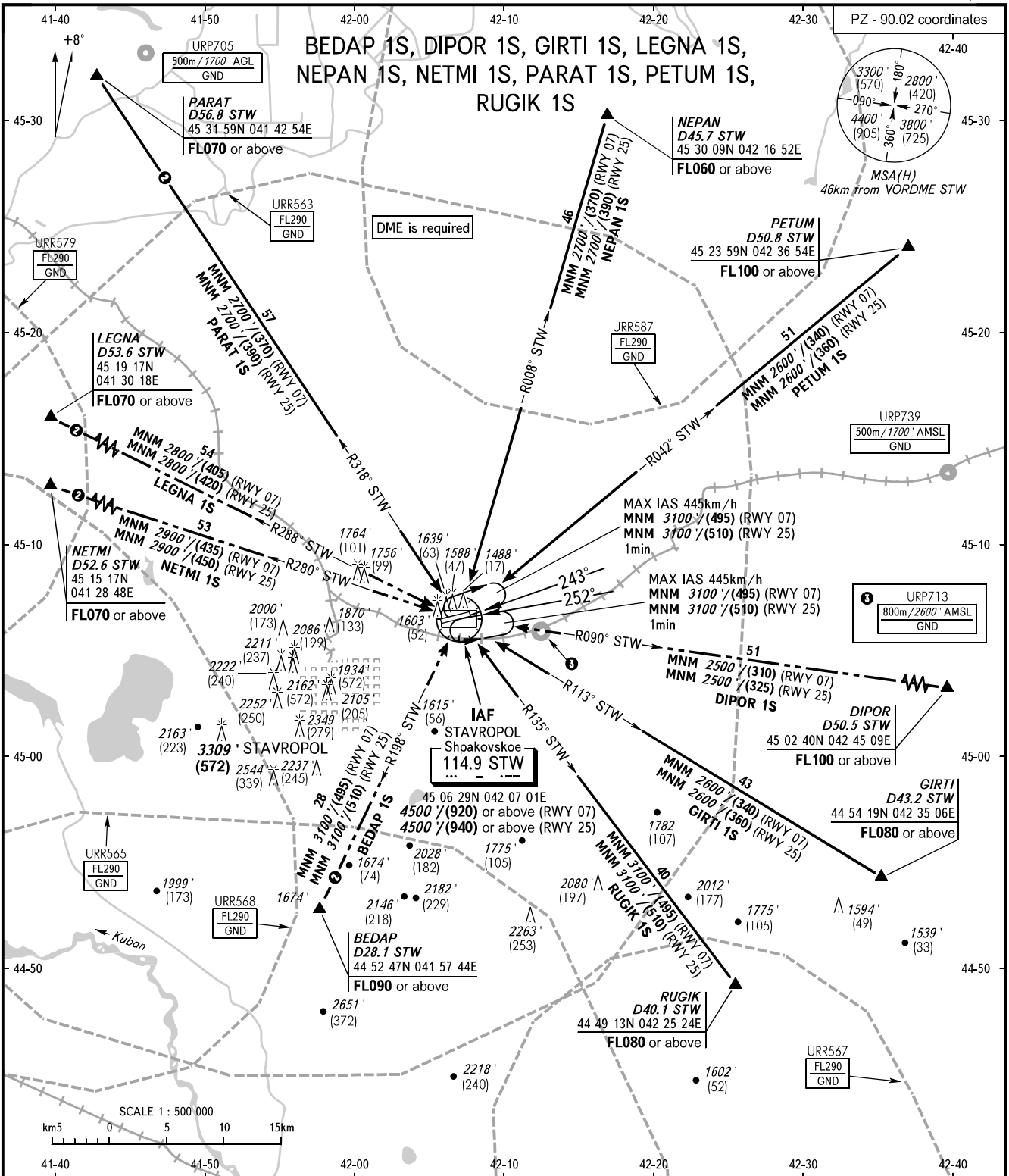


STANDARD ARRIVAL CHART
INSTRUMENT (STAR) - ICAO

STAVROPOL, RUSSIA
SHPAKOVSKOYE
RWY 07/25

TRANSITION
LEVEL: 1



<p>APPROACH TOWER 121.050 120.900</p>	<p>WARNING: 2 STAR PARAT 1S, BEDAP 1S, NETMI 1S, LEGNA 1S - pass IAF at FL060 or above.</p>	<p>1 TRANSITION LEVEL: - FL060 when QNH is 1013 hPa (760mm mercury column) or above; - FL070 when QNH is 977 hPa (733mm mercury column) or above, but less than 1013 hPa (760mm mercury column); - FL080 when QNH is less than 977 hPa (733mm mercury column).</p>
<p>BEARINGS AND TRACKS ARE MAGNETIC ALTITUDES IN FEET HEIGHTS IN METRES ELEVATIONS IN FEET AND METRES DISTANCES IN KILOMETRES</p>	<p>Alt set: - QNH (QFE on req); - hPa (mm on req).</p>	<p>NOTE PARAT 1S, DIPOR 1S, GIRTI 1S are not AVBL, when URR563 is active. NEPAN 1S, PETUM 1S, holding pattern are not AVBL, when URR563, URR587 are active. NETMI 1S, LEGNA 1S are not AVBL, when URR563, URR568, URR579 are active. RUGIK 1S is not AVBL, when URR563, URR567 are active. BEDAP 1S is not AVBL, when URR563, URR565, URR568 are active.</p>

CHANGE: Limiting bearing line withdrawn, URP705, URP713, URP739