

LOC/DME I-BQG 110.7 Chan 44	APP CRS 144°	Rwy Idg TDZE 22 Apt Elev 22	6997
-------------------------------------------------	------------------------	-------------------------------------------------	-------------

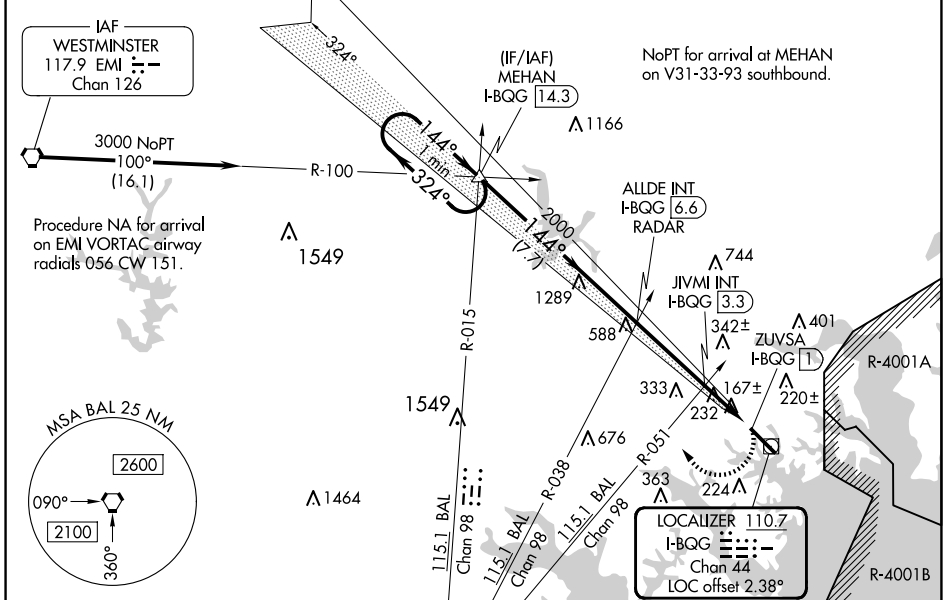
LOC RWY 15

MARTIN STATE (MTN)

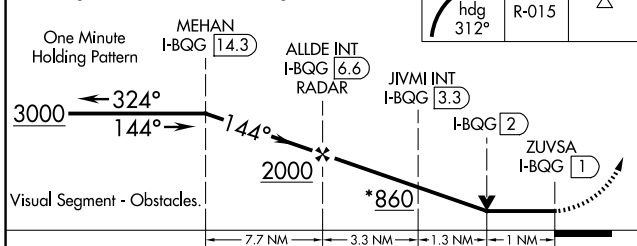
When local altimeter setting not received, use Baltimore/Washington Intl Thurgood Marshall altimeter setting; increase all MDA 60 feet and increase S-15 Cat A and Circling Cats C and D visibility 1/4 SM and increase JIVMI fix minimums S-15 Cats C and D visibility 1/8 SM and Circling Cat C and D visibility 1/4 SM. Rwy 15 helicopter visibility reduction below 3/4 SM NA. Circling Cat D NA northeast of Rwy 15-33.

MISSED APPROACH: Climbing right turn to 3000 on heading 312° and BAL VORTAC R-015 to MEHAN INT/I-BQG 14.3 DME and hold.

ATIS 124.925	POTOMAC APP CON 119.0 282.275	MARTIN TOWER ★ 121.3 (CTAF) 0 254.425	GND CON 121.8 253.4	UNICOM 122.95
------------------------	-----------------------------------------	-------------------------------------------------	-------------------------------	-------------------------



*920 when using Baltimore/Washington Intl Thurgood Marshall altimeter setting.



CATEGORY	A	B	C	D
S-15	860-1 838 (900-1)	860-1¼ 838 (900-1¼)	860-2½ 838 (900-2½)	838 (900-2½)
CIRCLING	860-1¼ 838 (900-1¼)	838 (900-1¼)	860-2½ 838 (900-2½)	860-2¾ 838 (900-2¾)
JIVMI FIX MINIMUMS (DUAL VOR RECEIVERS OR DME REQUIRED)				
S-15	500-1	478 (500-1)	500-1⅜	478 (500-1⅜)
CIRCLING	560-1	538 (600-1)	680-1¼ 658 (700-1¼)	740-2¼ 718 (800-2¼)

MEHAN	ELEV 22	TDZE 22
BAL R-015	HIRL Rwy 15-33 REIL Rws 15 and 33	

NE-3, 20 MAR 2025 to 17 APR 2025

NE-3, 20 MAR 2025 to 17 APR 2025