

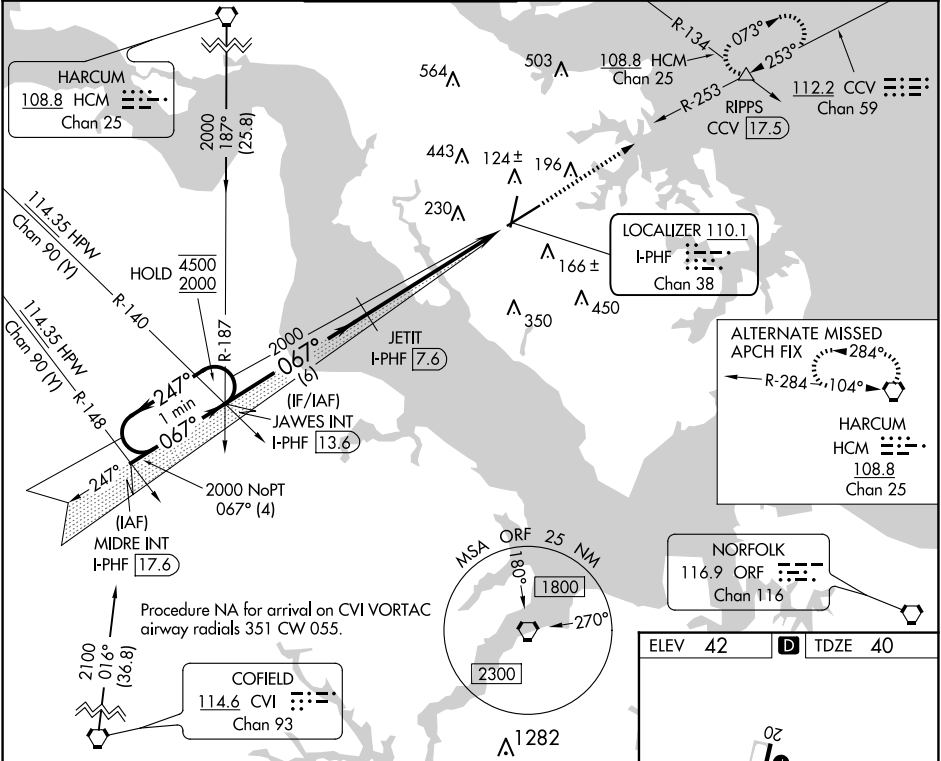
LOC/DME I-PHF 110.1 Chan 38	APP CRS 067°	Rwy Idg 8003 TDZE 40 Apt Elev 42
---	------------------------	---

ILS or LOC RWY 7
NEWPORT NEWS/WILLIAMSBURG INTL (PHF)

DME required.
RVR 1800 authorized with use of FD or AP or HUD to DA.

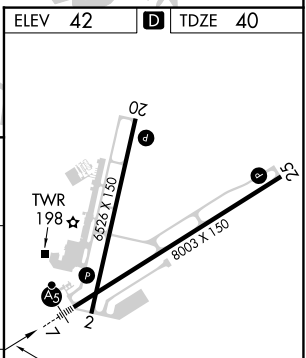
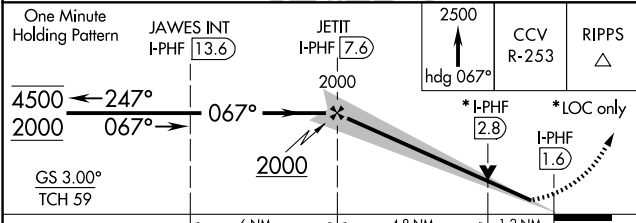
MALS R MISSED APPROACH: Climb to 2500 on heading 067° and on CCV VORTAC R-253 to RIPPS INT/CCV 17.5 DME and hold, continue climb-in-hold to 2500.

ATIS 128.65	NORFOLK APP CON 125.7 335.625	NEWPORT NEWS TOWER* 118.7 (CTAF) 257.9	GND CON 121.9 348.6	CLNC DEL 121.65 225.4	UNICOM 122.95
-----------------------	---	--	-------------------------------	---------------------------------	-------------------------



NE-3, 20 MAR 2025 to 17 APR 2025

NE-3, 20 MAR 2025 to 17 APR 2025



CATEGORY	A	B	C	D
S-ILS 7 #	240/24		200 (200-½)	
S-LOC 7	480/24	440 (500-½)	480/40	440 (500-¾)
CIRCLING	520-1 478 (500-1)	540-1 498 (500-1)	760-2 718 (800-2)	780-2¼ 738 (800-2¼)

REIL Rwy 20 and 25
HIRL Rwy 2-20 and 7-25