

WAAS CH <b>65835</b> <b>W31A</b>	APP CRS <b>312°</b>	Rwy Idg TDZE Apt Elev	<b>4797</b> <b>812</b> <b>827</b>
--	------------------------	-----------------------------	---

# RNAV (GPS) RWY 31

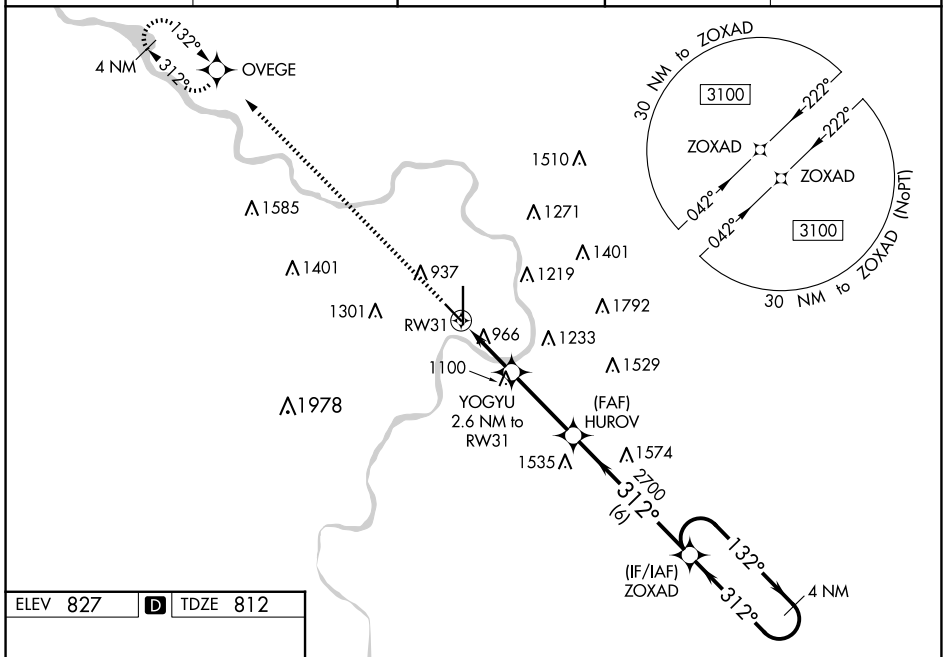
ROSECRANS MEML (STJ)

**▽** For uncompensated Baro-VNAV systems, LNAV/VNAV NA below -20°C (-4°F) or above 54°C (130°F). DME/DME RNP-0.3 NA. Baro-VNAV and VDP NA when using Kansas City Intl altimeter setting. Straight-In minimums NA at night. When local altimeter setting not received, use Kansas City Intl altimeter setting and increase all DA 97 feet and increase LPV visibility 1/8 mile and LNAV/VNAV visibility 3/8 mile all Cats; increase all MDA 100 feet and LNAV Cat C and D visibility 1/4 mile, and Circling Cat C 1/2 mile, Cat D 1/4 mile.

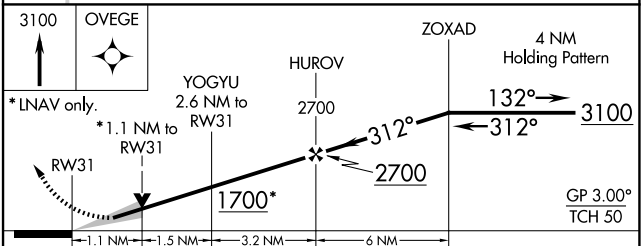
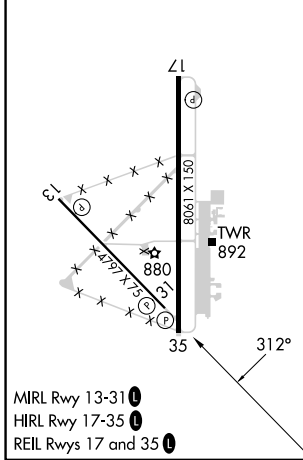
**▲** ASR/PAR

**MISSED APPROACH:**  
Climb to 3100 direct OVEGE and hold.

ATIS <b>125.05</b>	ST. JOSEPH APP CON * <b>120.35 360.8</b>	ST. JOSEPH TOWER * <b>126.9(CTAF) 239.0</b>	GND CON <b>121.9</b>	UNICOM <b>122.95</b>
-----------------------	---	--	-------------------------	-------------------------



ELEV 827	<b>D</b>	TDZE 812
----------	----------	----------



CATEGORY	A	B	C	D
LPV DA	1062-1 250 (300-1)			
LNAV/VNAV DA	1255-1½ 443 (500-1½)			
LNAV MDA	1220-1 408 (400-1)		1220-1½ 408 (400-1½)	
<b>C</b> CIRCLING	1400-1 573 (600-1)	1420-1 593 (600-1)	1620-2¼ 793 (800-2¼)	1640-2¾ 813 (900-2¾)

NC-3, 20 MAR 2025 to 17 APR 2025

NC-3, 20 MAR 2025 to 17 APR 2025