

STANDARD ARRIVAL CHART -INSTRUMENT

RJGG / CHUBU CENTRAIR

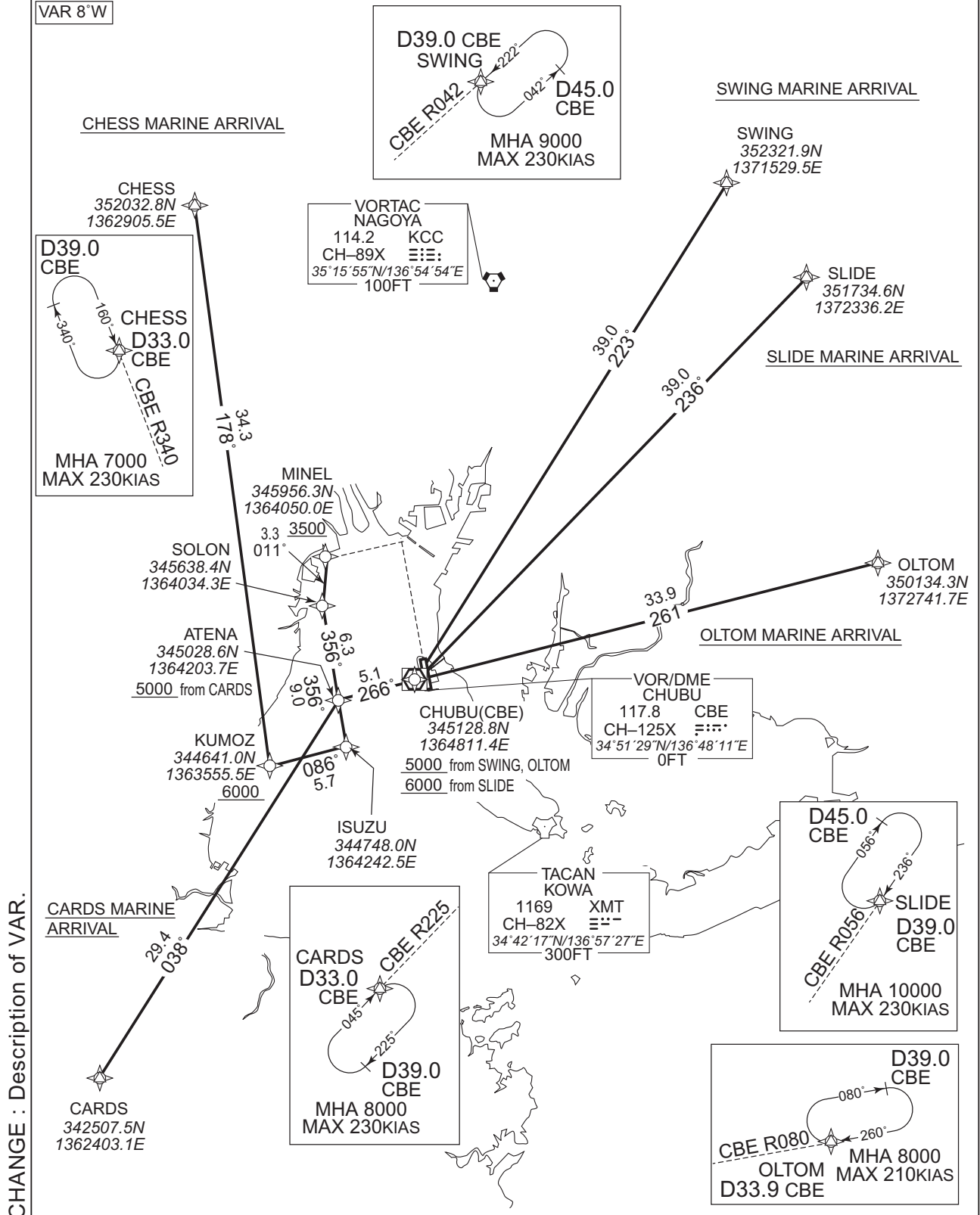
RNAV STAR RWY18

CARDS MARINE ARRIVAL / CHESS MARINE ARRIVAL
SWING MARINE ARRIVAL / SLIDE MARINE ARRIVAL
OLTOM MARINE ARRIVAL

RNAV 1

Note 1) DME/DME/IRU or GNSS required.
2) RADAR service required.

VAR 8°W



CHANGE : Description of VAR.

STANDARD ARRIVAL CHART -INSTRUMENT

RJGG / CHUBU CENTRAIR

RNAV STAR RWY18

CARDS MARINE ARRIVAL

From CARDS, to ATENA at or above 5000FT, to SOLON, to MINEL at or above 3500FT.

Critical DME	KCC : 4.0NM to SOLON~MINEL
DME GAP	-
Inappropriate Nav aids	See AD1.1.6.10.3. Inappropriate NAVAIDs for RNAV1.

Serial Number	Path Descriptor	Waypoint Identifier	Fly Over	Course °M(°T)	Magnetic Variation	Distance (NM)	Turn Direction	Altitude (FT)	Speed (KIAS)	Vertical Angle	Navigation Specification
001	IF	CARDS	-	-	-7.6	-	-	-	-	-	RNAV1
002	TF	ATENA	-	038 (030.2)	-7.6	29.4	-	+5000	-	-	RNAV1
003	TF	SOLON	-	356 (348.8)	-7.6	6.3	-	-	-	-	RNAV1
004	TF	MINEL	-	011 (003.7)	-7.6	3.3	-	+3500	-	-	RNAV1

CHESSE MARINE ARRIVAL

From CHESSE, to KUMOZ at or above 6000FT, to ISUZU, to SOLON, to MINEL at or above 3500FT.

Critical DME	CBE : 30.3NM to KUMOZ~16.3NM to KUMOZ KCC : 9.3NM to KUMOZ~2.3NM to KUMOZ 4.0NM to SOLON~MINEL
DME GAP	-
Inappropriate Nav aids	See AD1.1.6.10.3. Inappropriate NAVAIDs for RNAV1.

Serial Number	Path Descriptor	Waypoint Identifier	Fly Over	Course °M(°T)	Magnetic Variation	Distance (NM)	Turn Direction	Altitude (FT)	Speed (KIAS)	Vertical Angle	Navigation Specification
001	IF	CHESSE	-	-	-7.6	-	-	-	-	-	RNAV1
002	TF	KUMOZ	-	178 (170.6)	-7.6	34.3	-	+6000	-	-	RNAV1
003	TF	ISUZU	-	086 (078.6)	-7.6	5.7	-	-	-	-	RNAV1
004	TF	SOLON	-	356 (348.8)	-7.6	9.0	-	-	-	-	RNAV1
005	TF	MINEL	-	011 (003.7)	-7.6	3.3	-	+3500	-	-	RNAV1

CHANGE : VAR

STANDARD ARRIVAL CHART -INSTRUMENT

RJGG / CHUBU CENTRAIR

RNAV STAR RWY18

SWING MARINE ARRIVAL

From SWING, to CBE at or above 5000FT, to ATENA, to SOLON, to MINEL at or above 3500FT.

Critical DME	KCC : SWING~15.9NM to CBE 3.0NM to CBE~2.0NM to ATENA 4.0NM to SOLON~MINEL CBE : 15.9NM to CBE~3.0NM to CBE XMT : 5.9NM to CBE~2.0NM to ATENA
DME GAP	-
Inappropriate Nav aids	See AD1.1.6.10.3. Inappropriate NAVAIDs for RNAV1.

Serial Number	Path Descriptor	Waypoint Identifier	Fly Over	Course °M(°T)	Magnetic Variation	Distance (NM)	Turn Direction	Altitude (FT)	Speed (KIAS)	Vertical Angle	Navigation Specification
001	IF	SWING	-	-	-7.6	-	-	-	-	-	RNAV1
002	TF	CBE	-	223 (215.1)	-7.6	39.0	-	+5000	-	-	RNAV1
003	TF	ATENA	-	266 (258.7)	-7.6	5.1	-	-	-	-	RNAV1
004	TF	SOLON	-	356 (348.8)	-7.6	6.3	-	-	-	-	RNAV1
005	TF	MINEL	-	011 (003.7)	-7.6	3.3	-	+3500	-	-	RNAV1

SLIDE MARINE ARRIVAL

From SLIDE, to CBE at or above 6000FT, to ATENA, to SOLON, to MINEL at or above 3500FT.

Critical DME	KCC : SLIDE~20.0NM to CBE CBE~2.0NM to ATENA 4.0NM to SOLON~MINEL CBE : 14.0NM to CBE~3.0NM to CBE XMT : CBE~2.0NM to ATENA
DME GAP	-
Inappropriate Nav aids	See AD1.1.6.10.3. Inappropriate NAVAIDs for RNAV1.

Serial Number	Path Descriptor	Waypoint Identifier	Fly Over	Course °M(°T)	Magnetic Variation	Distance (NM)	Turn Direction	Altitude (FT)	Speed (KIAS)	Vertical Angle	Navigation Specification
001	IF	SLIDE	-	-	-7.6	-	-	-	-	-	RNAV1
002	TF	CBE	-	236 (228.2)	-7.6	39.0	-	+6000	-	-	RNAV1
003	TF	ATENA	-	266 (258.7)	-7.6	5.1	-	-	-	-	RNAV1
004	TF	SOLON	-	356 (348.8)	-7.6	6.3	-	-	-	-	RNAV1
005	TF	MINEL	-	011 (003.7)	-7.6	3.3	-	+3500	-	-	RNAV1

CHANGE : VAR

STANDARD ARRIVAL CHART -INSTRUMENT

RJGG / CHUBU CENTRAIR

RNAV STAR RWY18

OLTOM MARINE ARRIVAL

From OLTOM, to CBE at or above 5000FT, to ATENA, to SOLON, to MINEL at or above 3500FT.

Critical DME	KCC : CBE~2.0NM to ATENA 4.0NM to SOLON~MINEL XMT : 3.0NM to CBE~2.0NM to ATENA
DME GAP	—
Inappropriate Nav aids	See AD1.1.6.10.3. Inappropriate NAVAIDs for RNAV1.

Serial Number	Path Descriptor	Waypoint Identifier	Fly Over	Course °M(°T)	Magnetic Variation	Distance (NM)	Turn Direction	Altitude (FT)	Speed (KIAS)	Vertical Angle	Navigation Specification
001	IF	OLTOM	—	—	-7.6	—	—	—	—	—	RNAV1
002	TF	CBE	—	261 (252.9)	-7.6	33.9	—	+5000	—	—	RNAV1
003	TF	ATENA	—	266 (258.7)	-7.6	5.1	—	—	—	—	RNAV1
004	TF	SOLON	—	356 (348.8)	-7.6	6.3	—	—	—	—	RNAV1
005	TF	MINEL	—	011 (003.7)	-7.6	3.3	—	+3500	—	—	RNAV1

CHANGE : New PROC (OLTOM MARINE), Abolition PROC (DARTS MARINE)