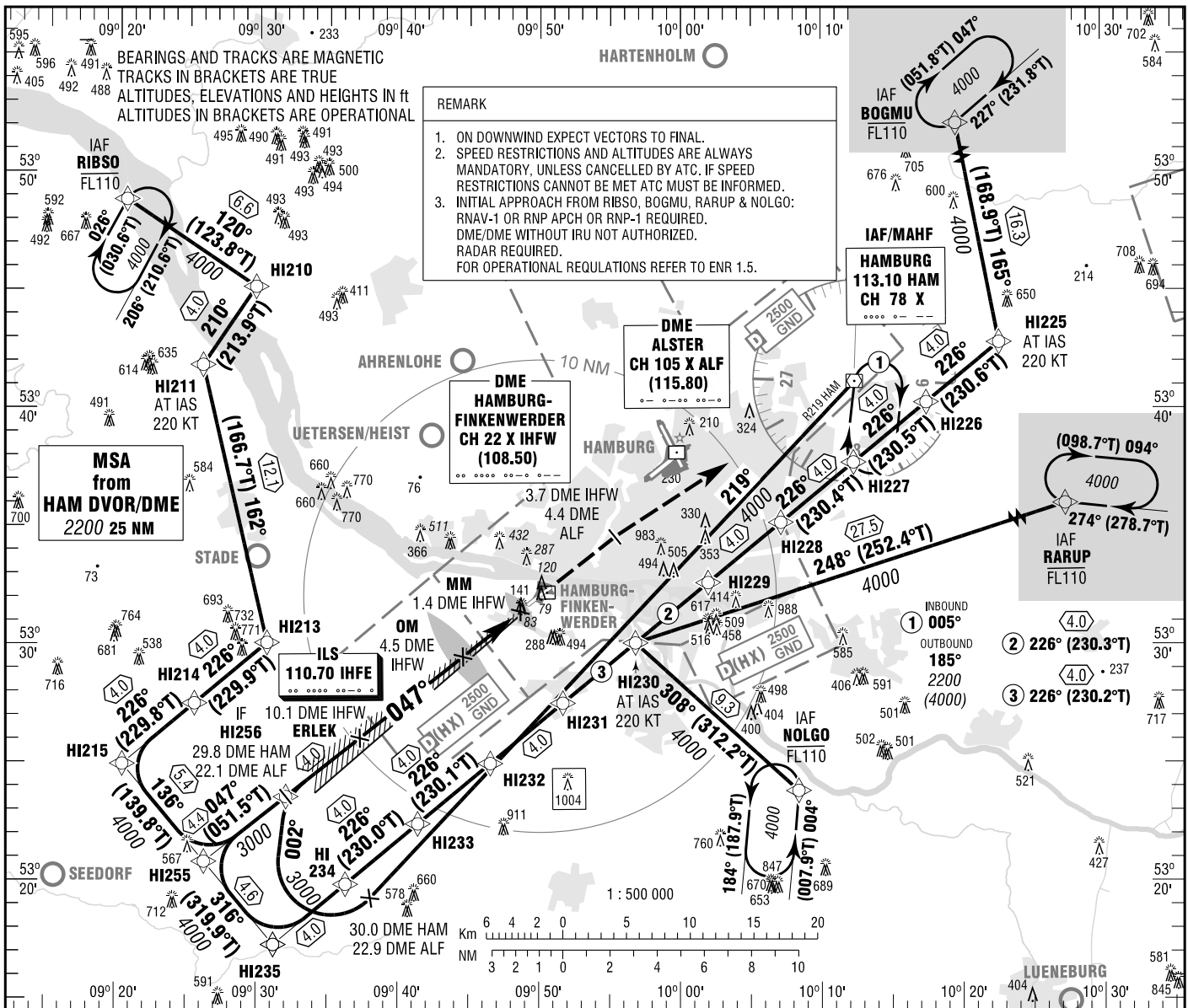


INSTRUMENT  
APPROACH  
CHART - ICAO

VAR 4° E  
ELEV 21  
OCH RELATED TO  
THR 05 ELEV 15

FINKENWERDER ATIS 135.965  
BREMER RADAR 134.255  
HAMBURG ARRIVAL 118.205  
FINKENWERDER TOWER 123.255  
FINKENWERDER APRON 121.655

HAMBURG-FINKENWERDER  
ILS CAT II  
RWY 05



REMARK

- ON DOWNWIND EXPECT VECTORS TO FINAL.
- SPEED RESTRICTIONS AND ALTITUDES ARE ALWAYS MANDATORY, UNLESS CANCELLED BY ATC. IF SPEED RESTRICTIONS CANNOT BE MET ATC MUST BE INFORMED.
- INITIAL APPROACH FROM RIBSO, BOGMU, RARUP & NOLGO: RNAV-1 OR RNP APCH OR RNP-1 REQUIRED. DME/DME WITHOUT IRU NOT AUTHORIZED. RADAR REQUIRED. FOR OPERATIONAL REGULATIONS REFER TO ENR 1.5.

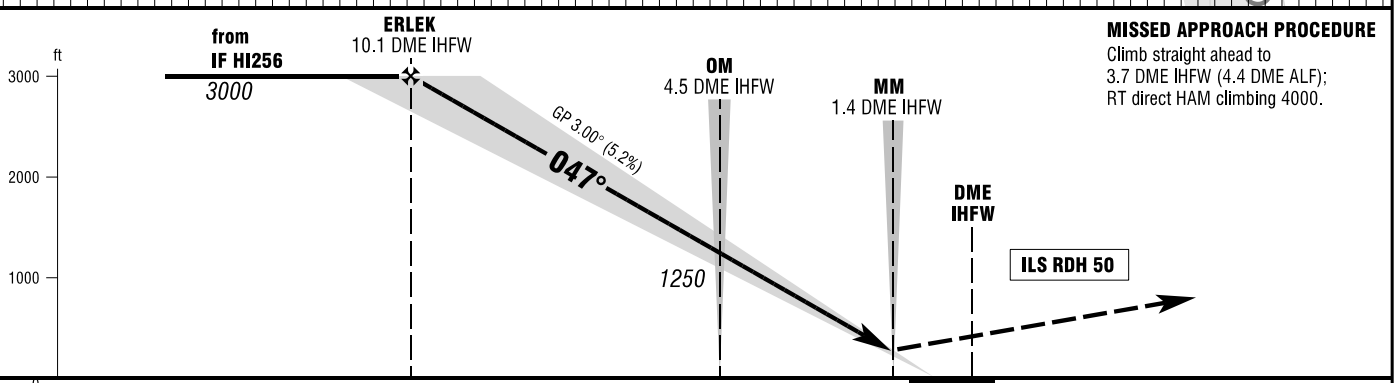
MSA from  
HAM DVOR/DME  
2200 25 NM

DME  
HAMBURG-  
FINKENWERDER  
CH 22 X IHW  
(108.50)

DME  
ALSTER  
CH 105 X ALF  
(115.80)

HAMBURG  
113.10 HAM  
CH 78 X

INBOUND  
① 005°  
OUTBOUND  
② 226° (230.3°T)  
③ 226° (230.2°T)



MISSED APPROACH PROCEDURE  
Climb straight ahead to  
3.7 DME IHW (4.4 DME ALF);  
RT direct HAM climbing 4000.

PROFILE SCALE 1 : 250 000  
NM 14 13 12 11 10 9 8 7 6 5 4 3 2 1 0 1 2 3 4 5 6 NM

OCA (OCH)	A	B	C	D	D <sub>L</sub>
ILS CAT I	215 (200)	225 (210)	234 (219)		244 (229)
ILS CAT II	102 (87)	118 (103)	132 (117)	145 (130)	165 (150)
CIRCLING* OCH RELATED TO AD ELEV	590 (570)	730 (710)	910 (890)	910 (890)	

DME IHW	9	8	7	6	5	4	3	2
DIST THR	8.2	7.2	6.2	5.2	4.2	3.2	2.2	1.2
ALTITUDE	2680	2360	2040	1730	1410	1090	770	450

GS	kt	80	100	120	140	160	180
ERLEK - THR (9.2 NM)	MIN:SEC	6:54	5:31	4:36	3:57	3:27	3:04
Rate of descent (5.2%)	ft / MIN	420	530	640	740	850	960

ILS CAT III NOT AVAILABLE. FOR CIRCLING APCH TO RWY 23 MNM GND VIS REQUIRED: 2000m. \*NORTHWEST OF AERODROME ONLY.

Correction: Completely revised.