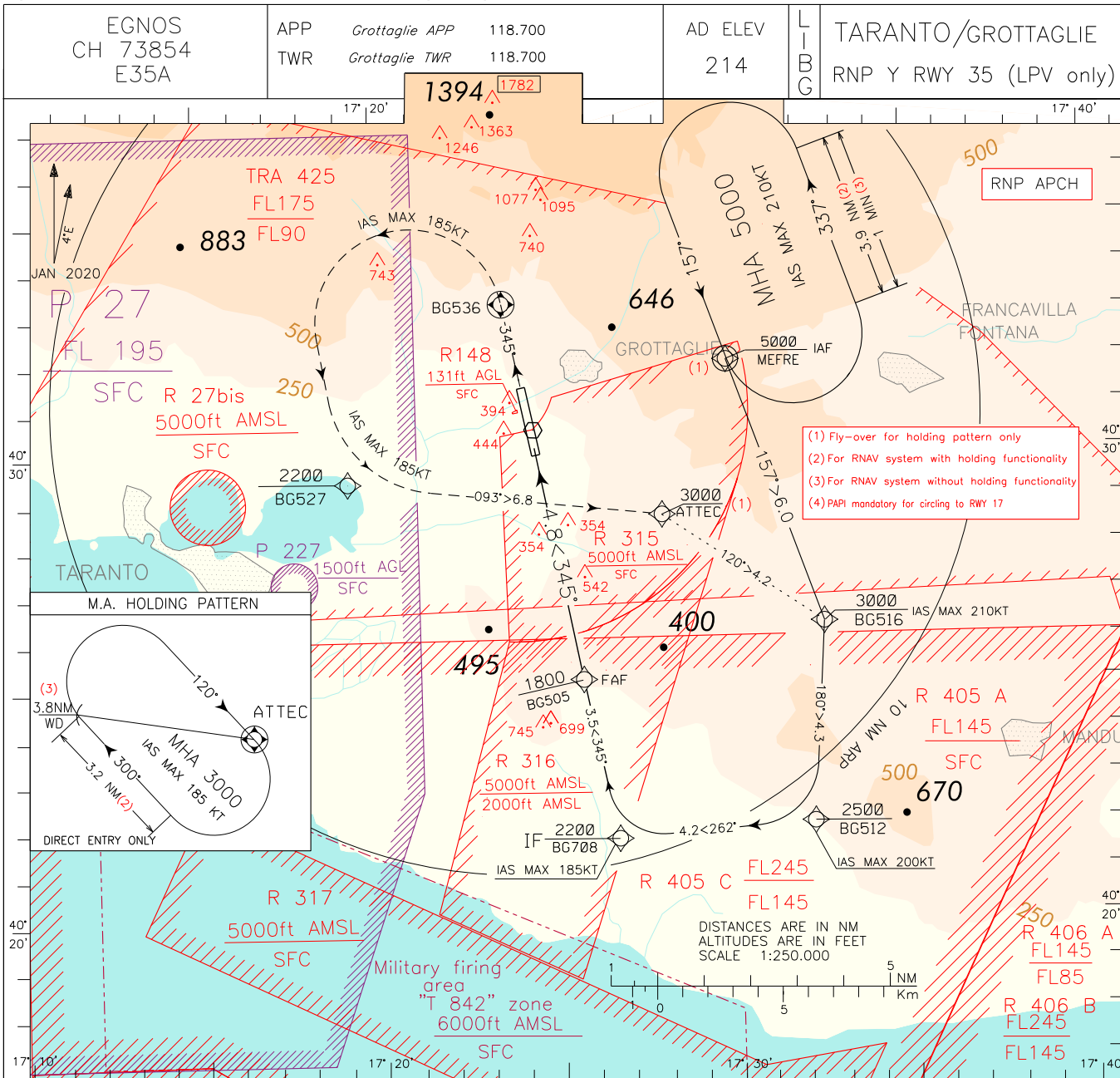
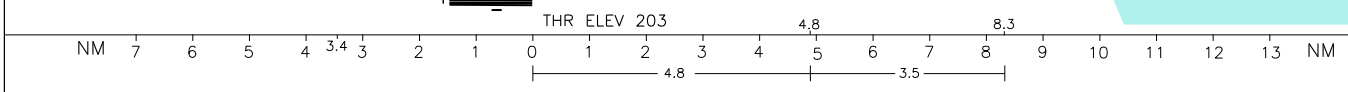
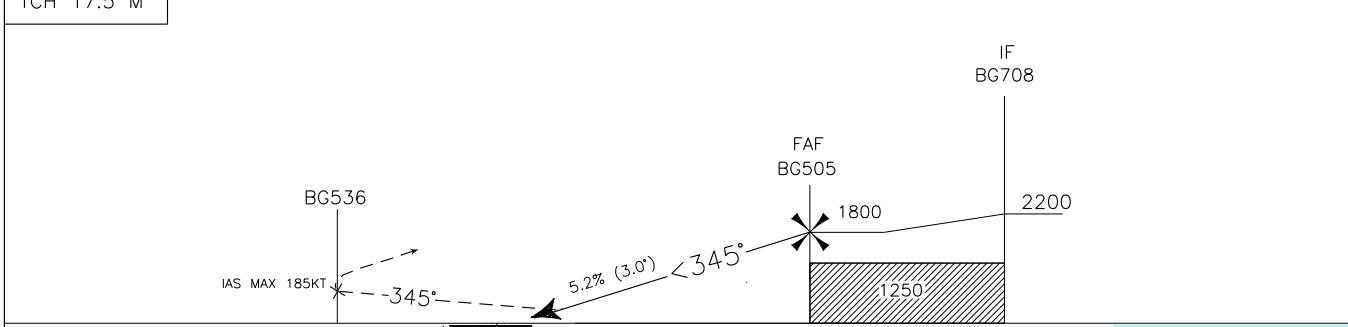


ICAO - INSTRUMENT APPROACH CHART



TRANSITION ALT 5000 MISSED APPROACH: Climbing to 3000 ft, proceed to BG536 on course 345°. At BG536, turn left (IAS MAX 185KT) direct to BG527, then turn left (IAS MAX 185KT) to ATTEC on track 093° and hold.
TCH 17.5 M



OCA (OCH)		A	B	C	D	CIRCLING	GS	FT PER MIN	DISTANCE to RWY35	ALT (HGT)	MNM SECT ALT
STRAIGHT IN APPROACH	LPV	419(216)	431(228)	439(236)	450(247)						
							80	425	4	1535(1332)	
							100	531	3	1215(1012)	
							120	637	2	895(692)	
							140	743	1	580(377)	
							160	849			
CIRCLING (4)		850 (636)		1300 (1086)							

TABULAR DESCRIPTION

RNP Y RWY35 – Instrument Approach procedure – Transition Via MEFRE

Serial Number	Path Terminator	Waypoint Identifier	Fly Over	Course °M(°T)	Magnetic Variation	Distance (NM)	Turn Direction	Altitude (ft)	Speed Limit (kt)	VPA/ TCH	Navigation Specification
010	IF	MEFRE	-	-	-	-	-	+5000	-	-	RNP 1
020	TF	BG516	-	157° (160.8°)	-	6.0	-	+3000	-210	-	RNP 1
030	TF	BG512	-	180° (184.0°)	-	4.3	-	+2500	-200	-	RNP 1
040	TF	BG708	-	262° (266.1°)	-	4.2	-	+2200	-185	-	RNP 1
050	TF	BG505	-	345° (348.7°)	-	3.5	-	+1800	-	-	RNP APCH
060	-	RWY35	Y	345° (348.7°)	-	4.8	-	@260 (1)	-	-3.0/17.5	RNP APCH
-	CF	BG536	Y	345° (348.7°)	+4	-	-	-	-185	-	RNP APCH
070	DF	BG527	-	-	-	-	-	+2200	-185	-	RNP 1
080	TF	ATTEC	-	093° (096.6°)	-	6.8	-	+3000	-185	-	RNP 1
090	HM (2)	ATTEC	Y	120°(124.0°)	+4	-	R	+3000	-185	-	RNP 1

RNP Y RWY35 – Instrument Approach procedure – Transition Via ATTEC (following Missed Approach)

Serial Number	Path Terminator	Waypoint Identifier	Fly Over	Course °M(°T)	Magnetic Variation	Distance (NM)	Turn Direction	Altitude (ft)	Speed Limit (kt)	VPA/ TCH	Navigation Specification
010	IF	ATTEC	-	-	-	-	-	+3000	-	-	RNP 1
020	TF	BG516	-	120° (124.5°)	-	4.2	-	+3000	-210	-	RNP 1
030	TF	BG512	-	180° (184.0°)	-	4.3	-	+2500	-200	-	RNP 1
040	TF	BG708	-	262° (266.1°)	-	4.2	-	+2200	-185	-	RNP 1
050	TF	BG505	-	345° (348.7°)	-	3.5	-	+1800	-	-	RNP APCH
060	-	RWY35	Y	345° (348.7°)	-	4.8	-	@260 (1)	-	-3.0/17.5	RNP APCH
-	CF	BG536	Y	345° (348.7°)	+4	-	-	-	-185	-	RNP APCH
070	DF	BG527	-	-	-	-	-	+2200	-185	-	RNP 1
080	TF	ATTEC	-	093° (096.6°)	-	6.8	-	+3000	-185	-	RNP 1
090	HM (2)	ATTEC	Y	120°(124.0°)	+4	-	R	+3000	-185	-	RNP 1

(1) THR Altitude plus TCH

(2) Direct Entry Only

Path Terminator	Waypoint Identifier	Inbound Course °M (°T)	Leg Distance (NM) (3)	Timing(min.)/ Waypoint Distance (NM) (4)	Turn Direction	Minimum Altitude (FT)	Maximum Altitude (FL)	Speed Limit (kt)	Magnetic Variation (°)	Navigation Specification
HM	MEFRE	157°(160.8°)	3.9	1.0 / -	L	+5000	-	-210	+4	RNP 1
HM (2)	ATTEC	120°(124.0°)	3.2	- / 3.8	R	+3000	-	-185	+4	RNP 1

(2) Direct Entry Only

(3) RNAV system with holding functionality

(4) RNAV system without holding functionality