

# INSTRUMENT APPROACH CHART-ICAO

VAR 4.1° E

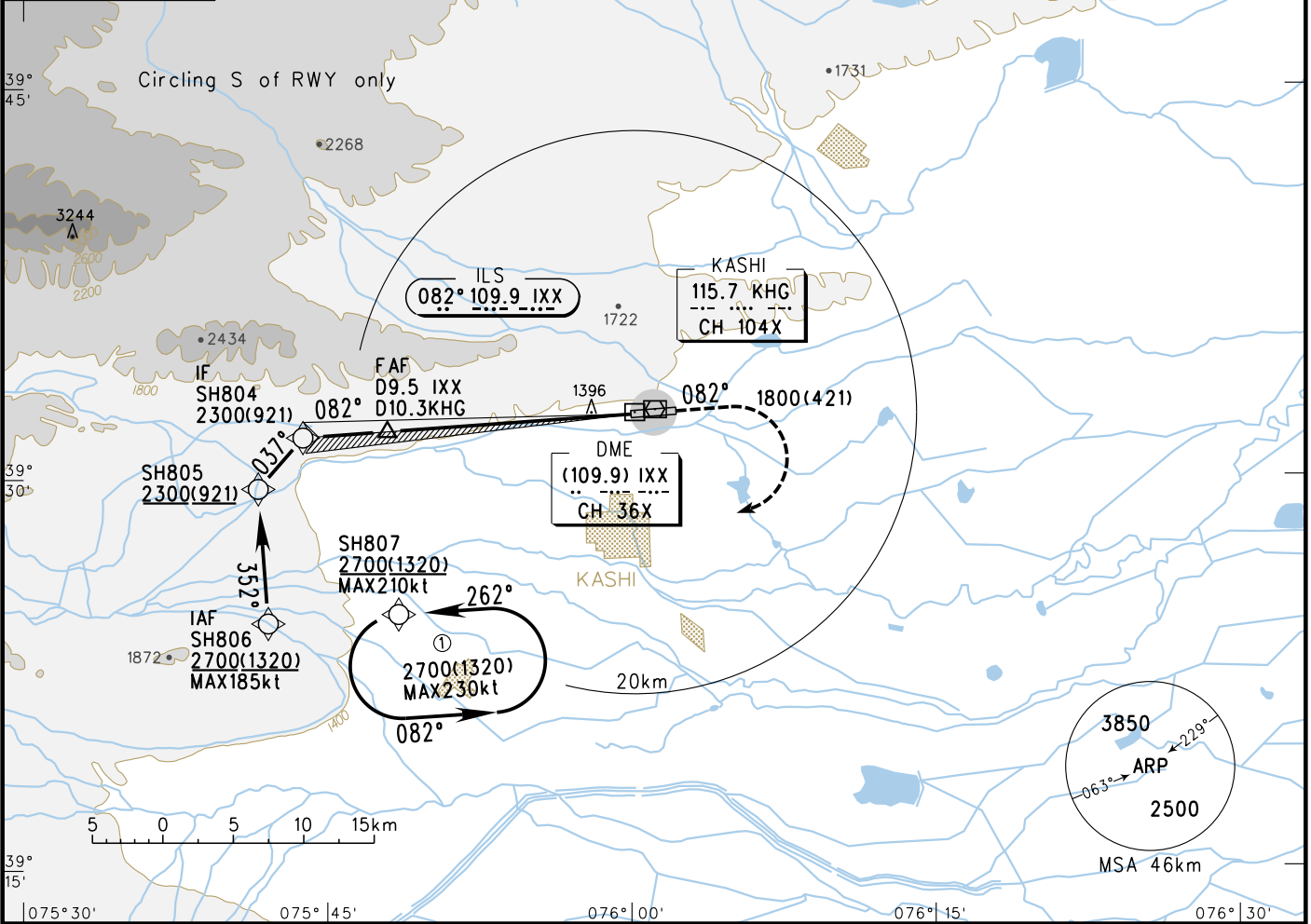
AERODROME ELEV 1380.0  
THR RWY08 ELEV 1378.6

ATIS 126.2  
TWR 118.5(130.0)

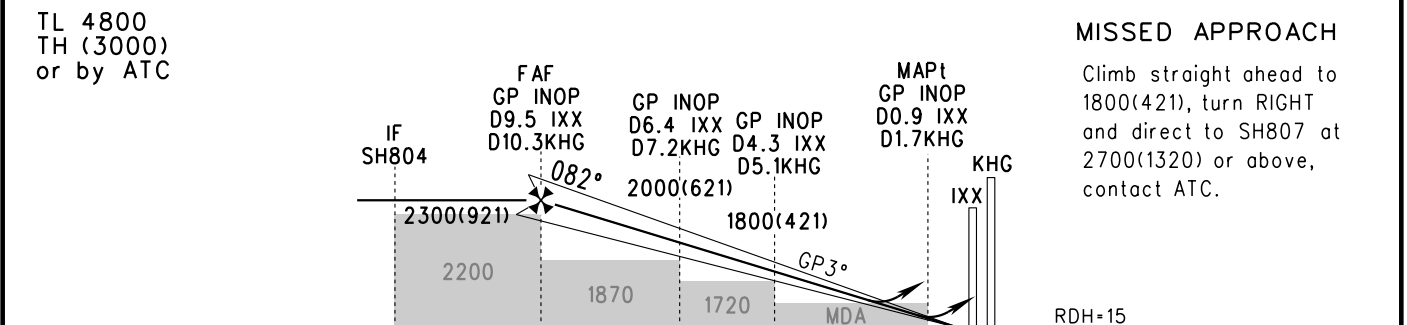
## ZWSH KASHI/Laining

RNP ILS/DME y RWY08

BEARINGS ARE MAGNETIC.  
ALTITUDES, ELEVATIONS  
AND HEIGHTS IN METERS.  
DME DISTANCES IN  
NAUTICAL MILES.  
DISTANCES IN KM.



GP INOP	DME (IXX) (NM)	8	7	6	5	4	3	2
	ALT (m)	2155	2058	1961	1864	1767	1670	1573



TL 4800 TH (3000) or by ATC					MISSED APPROACH Climb straight ahead to 1800(421), turn RIGHT and direct to SH807 at 2700(1320) or above, contact ATC.						
	IF SH804	FAF GP INOP D9.5 IXX D10.3 KHG	GP INOP D6.4 IXX D7.2 KHG	GP INOP D4.3 IXX D5.1 KHG	MAPt GP INOP D0.9 IXX D1.7 KHG	KHG IXX					
	2300(921)	2300(921)	2000(621)	1800(421)	1720	MDA					
	23.3km	17.4	11.6	7.7	1.4	RDH=15					
	A	B	C	D	FAF-MAPt(GP INOP) 16.0km						
ILS/DME	DA(H) 1439(60) RVR/VIS 800/800	1444(65) 800/800	1449(70) 800/800		GS in kt	80	100	120	140	160	180
					km/h	150	185	220	260	295	335
GP INOP	MDA(H) 1565(185) VIS 2900				Time min:sec	6:29	5:11	4:19	3:42	3:14	2:53
CIRCLING	MDA(H) 1720(340) VIS 5000				Rate of descent m/s	2.2	2.7	3.2	3.8	4.3	4.9
<p>⚠ RVR 550 can be implemented when using approved HUD or AP or FD for approach.</p> <p>Changes: Note.</p>											