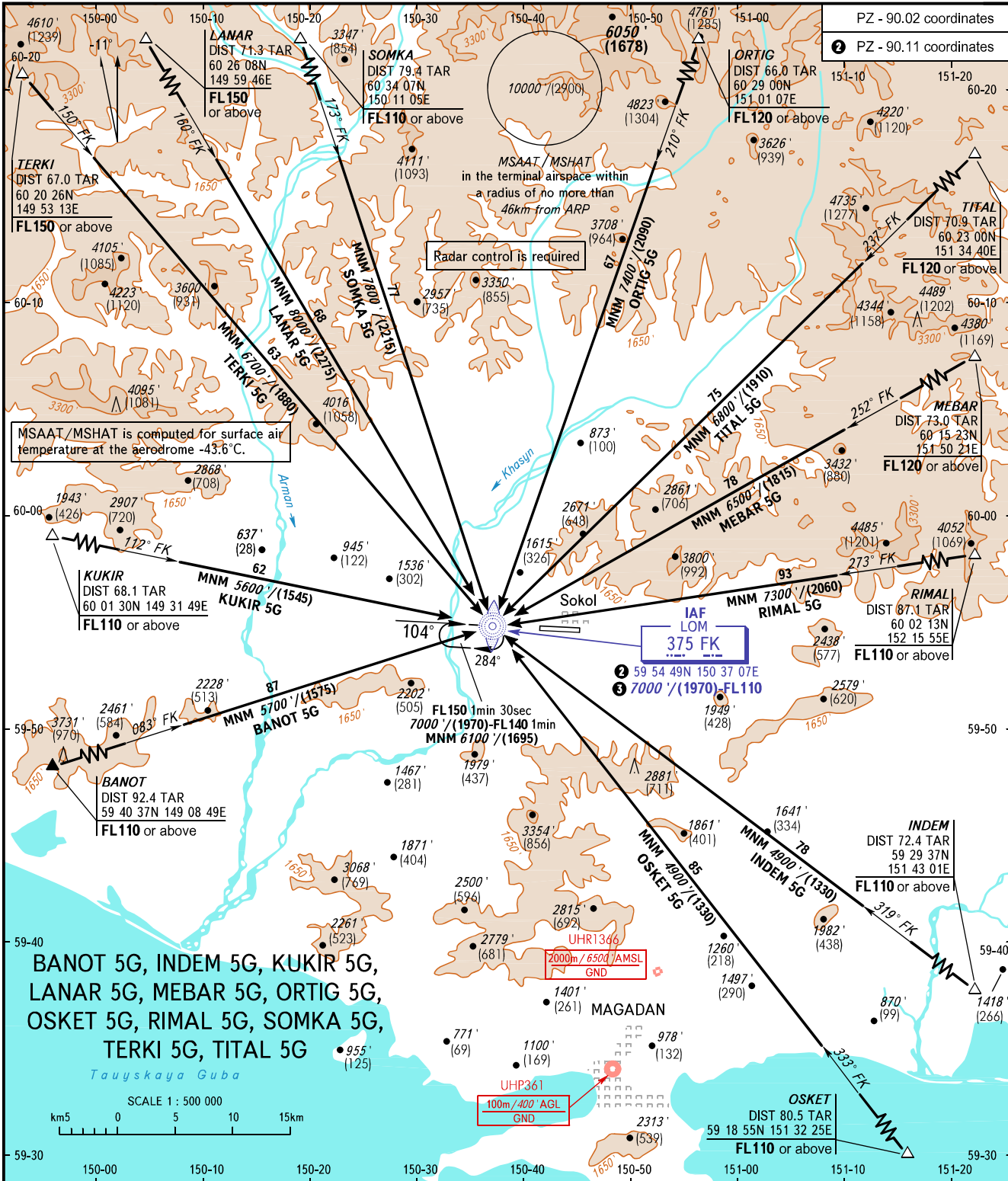


STANDARD ARRIVAL CHART  
INSTRUMENT (STAR) - ICAO

MAGADAN, RUSSIA  
SOKOL  
RWY 10

TRANSITION  
LEVEL: **1**



APPROACH TOWER	119.300 120.800	<p><b>1</b> TRANSITION LEVEL:</p> <ul style="list-style-type: none"> <li>- FL110 when QNH is 1013 hPa (760mm mercury column) or above;</li> <li>- FL120 when QNH is 977 hPa (733mm mercury column) or above but less than 1013 hPa (760mm mercury column);</li> <li>- FL130 when QNH is less than 977 hPa (733mm mercury column).</li> </ul> <p><b>2</b> WARNING</p> <p>Minimum ALT/HGT at IAF LOM FK:</p> <ul style="list-style-type: none"> <li>- 8000'/(2275) for LANAR 5G;</li> <li>- 7400'/(2090) for ORTIG 5G;</li> <li>- 7300'/(2060) for RIMAL 5G;</li> <li>- 7800'/(2215) for SOMKA 5G.</li> </ul>
BEARINGS AND TRACKS ARE MAGNETIC ALTITUDES IN FEET HEIGHTS IN METRES ELEVATIONS IN FEET AND METRES DISTANCES IN KILOMETRES	Alt set: -QNH(QFE on req); -hPa(mm on req).	

CHANGE: New chart