

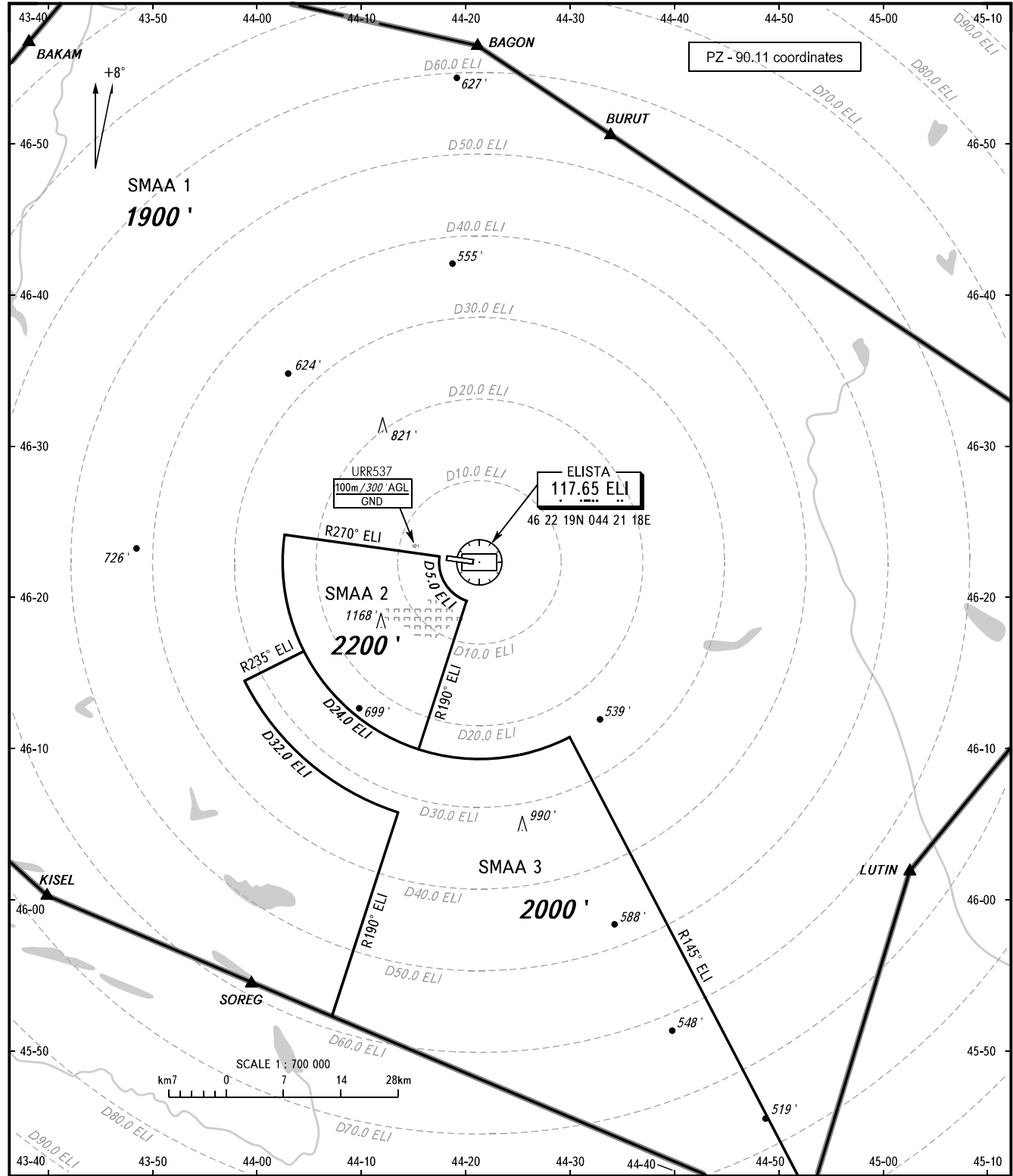
ATC SURVEILLANCE MINIMUM
ALTITUDE CHART - ICAO

ELEV
502'

TRANSITION
ALTITUDE : **4000'**

ELISTA, RUSSIA

ELISTA



TOWER 124.200

WARNING:

1. The chart may only be used for cross-checking of altitudes assigned while the aircraft is under radar control.
2. When vectoring is carried out under low-temperature conditions, minimum vectoring altitudes for IFR flights must be corrected by altimeter temperature correction.

BEARINGS AND TRACKS ARE MAGNETIC
ALTITUDES AND ELEVATIONS IN FEET
DISTANCES IN KILOMETRES

Alt set: -QNH(QFE on req);
-hPa(mm on req).

CHANGE: New chart

SURVEILLANCE MINIMUM ALTITUDE AREAS		
IDENT	MNM ALT	LATERAL LIMITS (PZ-90.11 coordinates)
SMAA 1	1900 ft	470200N 0434424E - 465628N 0442109E - 462431N 0452935E - 460147N 0450207E - 453859N 0445155E - 460011N 0434018E - 461536N 0431524E - 463836N 0431618E - 470200N 0434424E excluding Sectors 2 and 3.
SMAA 2	2200 ft	462243N 0441724E - 462407N 0440242E then anticlockwise by arc of a circle radius of 24 KM centred at VORDME (462219N 0442118E) to 461000N 0441532E - 461946N 0442004E then clockwise by arc of a circle radius of 5 KM centred at VORDME (462219N 0442118E) to 462243N 0441724E.
SMAA 3	2000 ft	461626N 0440435E then anticlockwise by arc of a circle radius of 24 KM centred at VORDME (462219N 0442118E) to 461048N 0442951E - 453957N 0445235E - 453859N 0445155E - 455215N 0440708E - 460553N 0441337E then clockwise by arc of a circle radius of 32 KM centred at VORDME (462219N 0442118E) to 461427N 0435856E - 461626N 0440435E.