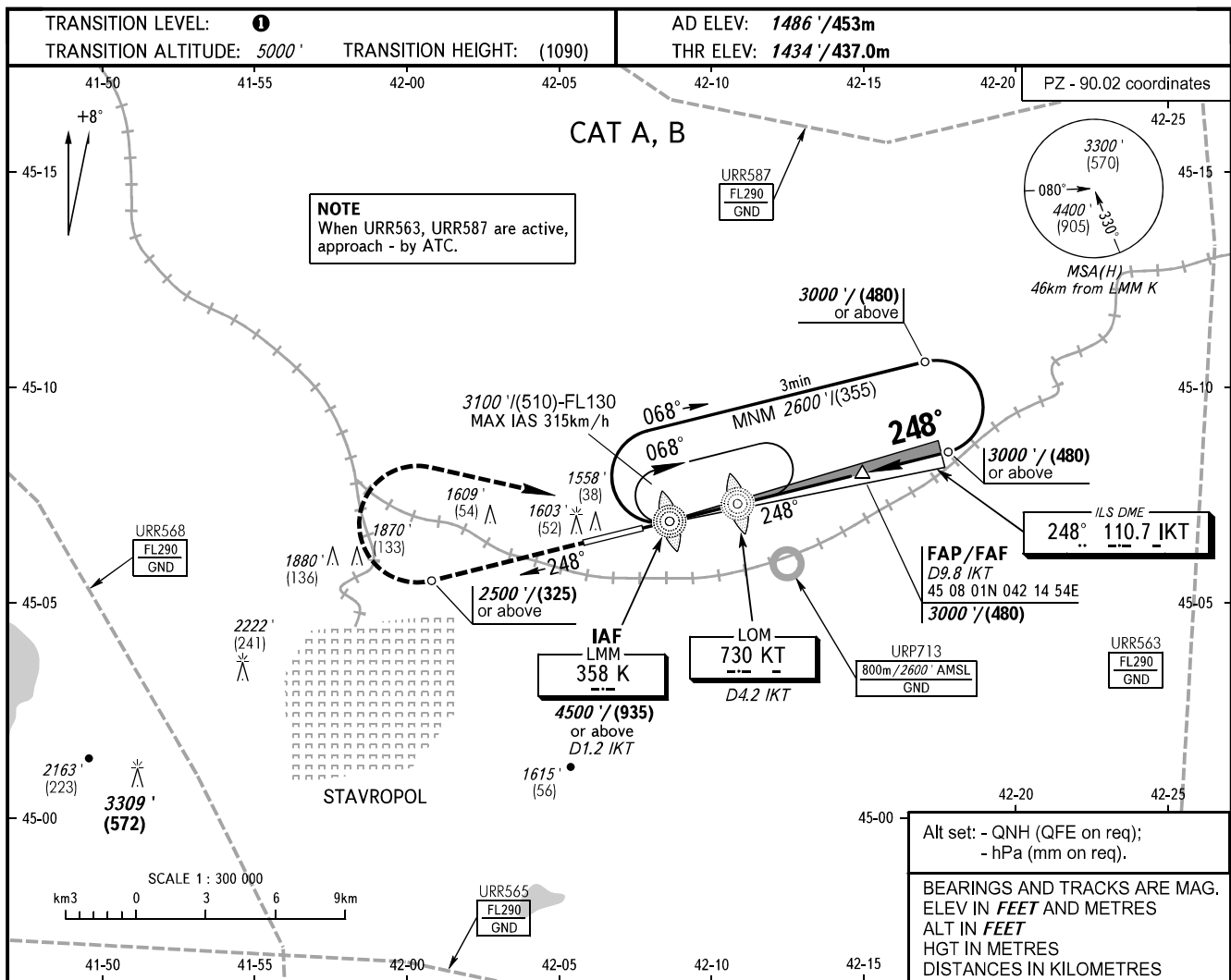


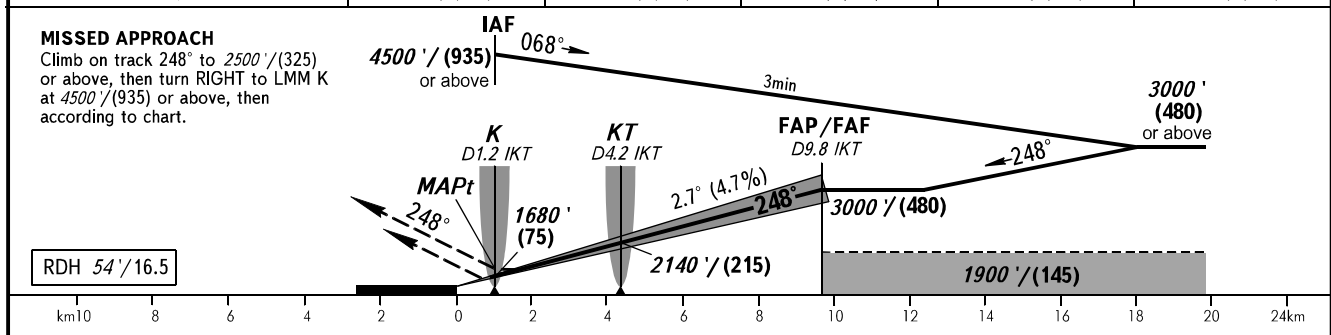
INSTRUMENT
APPROACH
CHART - ICAO

STAVROPOL, RUSSIA
SHPAKOVSKOYE
ILS W CAT I, LOC W RWY 25

TOWER 120.900



DME IKT	2.0	4.0	6.0	8.0	9.8
ALTITUDE/HEIGHT	1800' / (115)	2110' / (210)	2420' / (305)	2730' / (395)	3000' / (480)



OCA(H)		A	B	C	D						
Straight-in Approach	CAT I	1587' (153') (47)	1599' (166') (51)								
	LOC	1700' (270') (85)	1700' (270') (85)								
Circling		1940' (450') (140)	1980' (500') (155)								
GROUND SPEED		km/h	150	180	210	240	270	300	330	360	390
RATE OF DESCENT		m/s	1.9	2.3	2.7	3.1	3.5	3.9	4.3	4.7	5.0
		ft/min	385	463	540	617	694	771	848	925	1002

1 TRANSITION LEVEL:
- FL060 when QNH is 1013 hPa (760mm mercury column) or above;
- FL070 when QNH is 977 hPa (733mm mercury column) or above, but less than 1013 hPa (760mm mercury column);
- FL080 when QNH is less than 977 hPa (733mm mercury column).

WARNING
ILS DME IKT reads zero at RWY 25 THR.

CHANGE: Limiting bearing line withdrawn, URP713