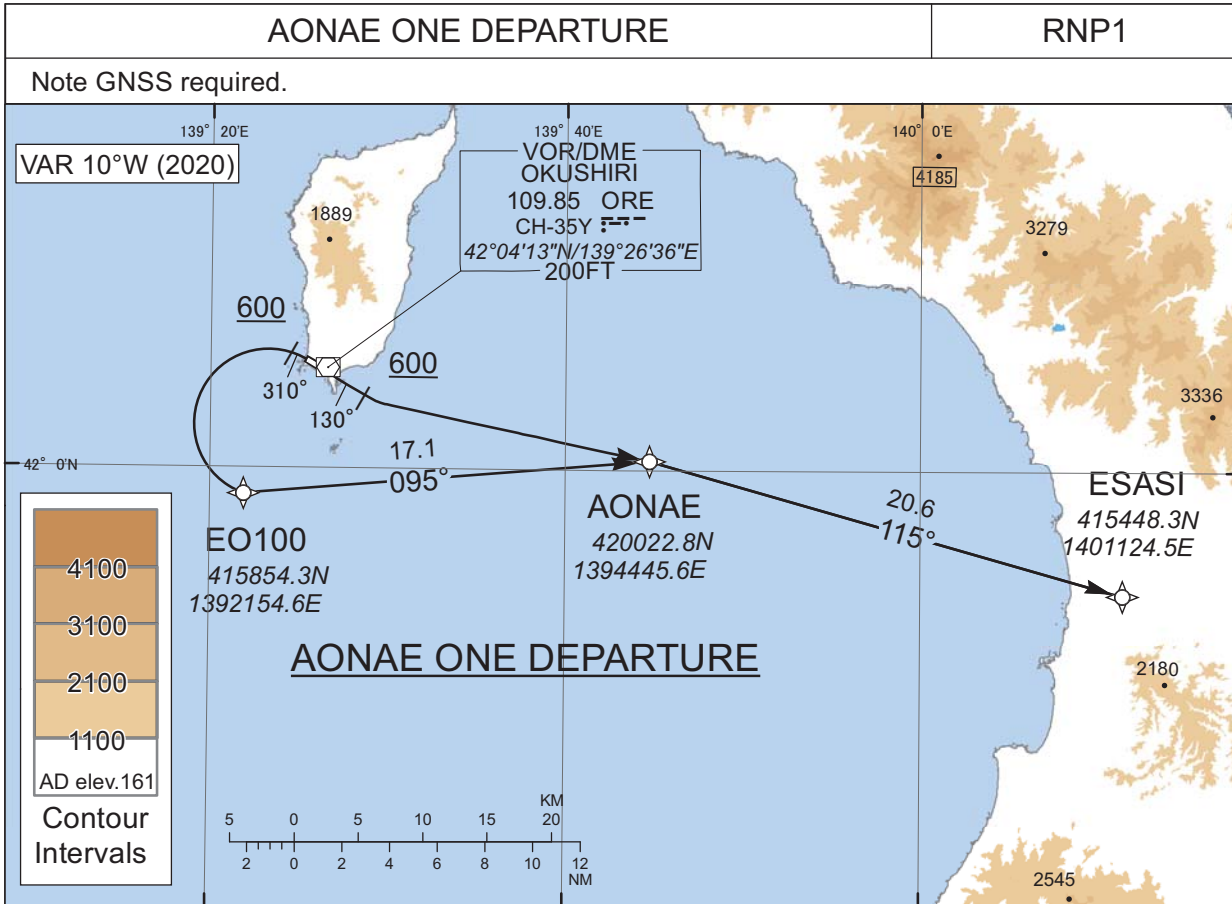


STANDARD DEPARTURE CHART - INSTRUMENT

RJEO / OKUSHIRI

RNAV SID



AONAE ONE DEPARTURE

RWY13: Climb on HDG 130° at or above 600FT, turn left direct to AONAE, to ESASI.
 RWY31: Climb on HDG 310° at or above 600FT, turn left direct to EO100, to AONAE, to ESASI.

Note RWY31: 4.5% climb gradient required up to 600FT.
 OBST ALT 209FT located at 0.1NM 354°FM end of RWY31

RWY13

Serial Number	Path Descriptor	Waypoint Identifier	Fly Over	Course °M(°T)	Magnetic Variation	Distance (NM)	Turn Direction	Altitude (FT)	Speed (KIAS)	Vertical Angle	Navigation Specification
001	VA	-	-	130 (120.3)	-9.8	-	-	+600	-	-	RNP1
002	DF	AONAE	-	-	-9.8	-	L	-	-	-	RNP1
003	TF	ESASI	-	115 (105.6)	-9.8	20.6	-	-	-	-	RNP1

RWY31

Serial Number	Path Descriptor	Waypoint Identifier	Fly Over	Course °M(°T)	Magnetic Variation	Distance (NM)	Turn Direction	Altitude (FT)	Speed (KIAS)	Vertical Angle	Navigation Specification
001	VA	-	-	310 (300.3)	-9.8	-	-	+600	-	-	RNP1
002	DF	EO100	-	-	-9.8	-	L	-	-	-	RNP1
003	TF	AONAE	-	095 (084.9)	-9.8	17.1	-	-	-	-	RNP1
004	TF	ESASI	-	115 (105.6)	-9.8	20.6	-	-	-	-	RNP1

CHANGE : Navigation Specification(Basic RNP1 → RNP1).