

VORTAC GCK 113.3 Chan 80	APP CRS 173°	Rwy Idg 7299 TDZE 2889 Apt Elev 2891
--	------------------------	---

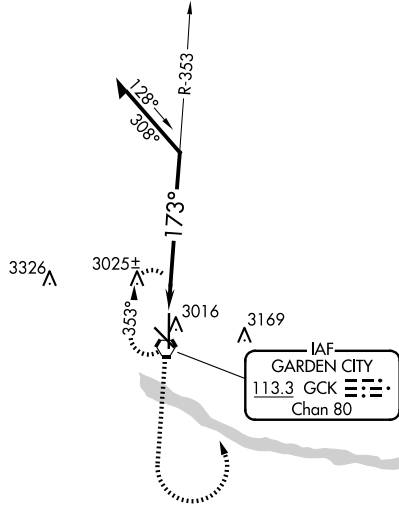
VOR RWY 17

GARDEN CITY RGNL (GCK)

▽ When local altimeter setting not received, use Dodge City Rgnl altimeter setting and increase all MDA 140 feet and Circling Cat C visibility ½ SM and Circling Cat D visibility ¼ SM. VDP NA when using Dodge City Rgnl altimeter setting.

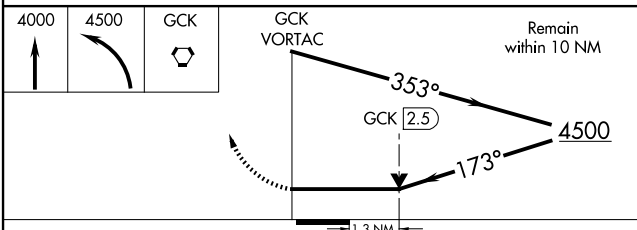
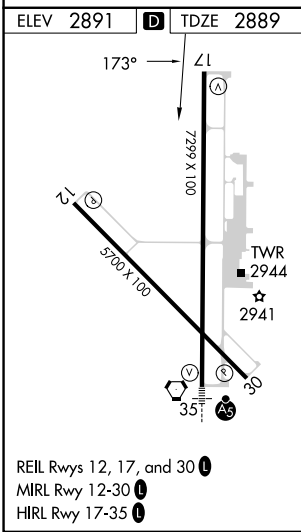
MISSED APPROACH:
Climb to 4000, then climbing left turn to 4500 direct GCK VORTAC and hold.

ASOS 121.325	KANSAS CITY CENTER 125.2 285.425	GARDEN CITY TOWER * 118.15 (CTAF) 0 254.4	GND CON 119.0 254.4	UNICOM 122.95
------------------------	--	---	-------------------------------	-------------------------



NC-2, 20 MAR 2025 to 17 APR 2025

NC-2, 20 MAR 2025 to 17 APR 2025



CATEGORY	A	B	C	D
S-17	3340-1	451 (500-1)	3340-1¼ 451 (500-1¼)	3340-1½ 451 (500-1½)
C CIRCLING	3340-1 449 (500-1)	3360-1 469 (500-1)	3480-1½ 589 (600-1½)	3480-2 589 (600-2)