

STANDARD DEPARTURE CHART-INSTRUMENT

RJCC / NEW CHITOSE

SID

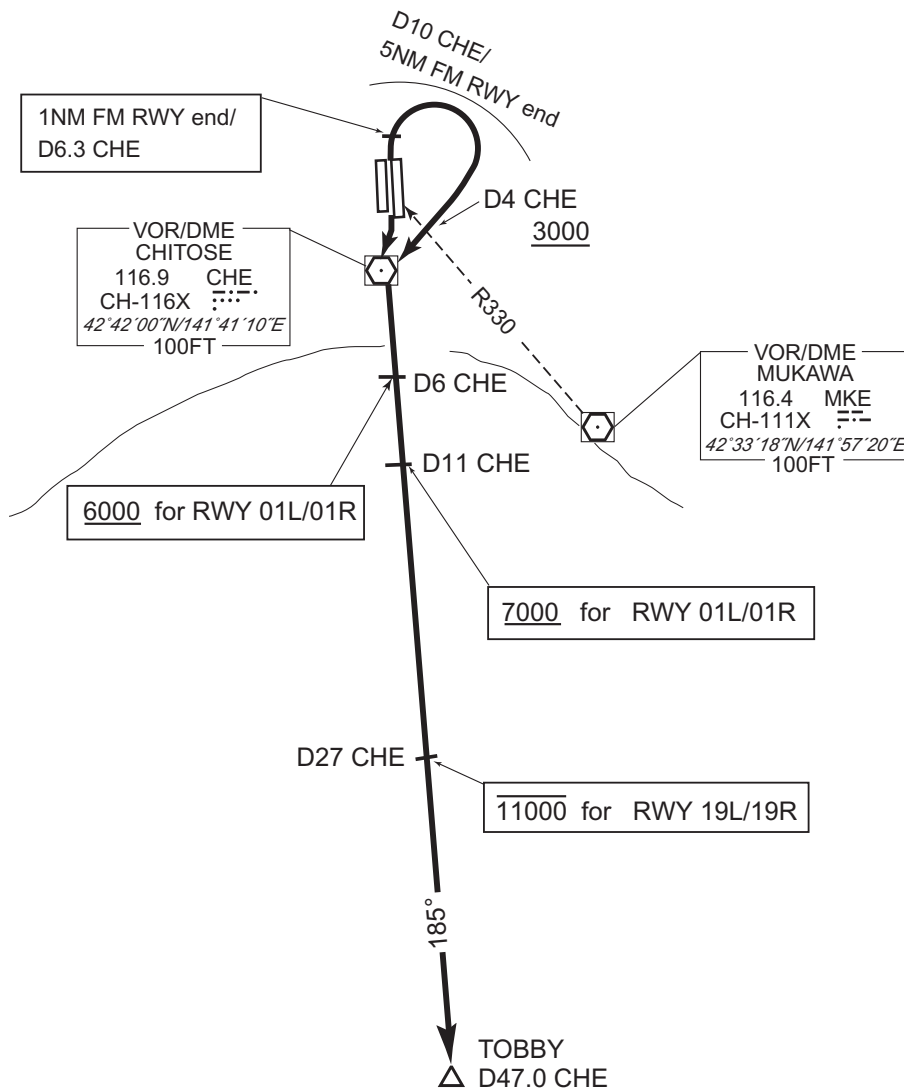
TOBBY EIGHT DEPARTURE

RWY01L/01R : Climb RWY HDG until 1NM FM RWY end / CHE 6.3DME, turn right, direct to CHE VOR/DME within CHE 10DME (5NM FM RWY end), via CHE R185 to TOBBY.

Cross 4DME prior to CHE VOR/DME (MKE R330) at or above 3000FT, cross CHE R185/6DME at or above 6000FT, cross CHE R185/11DME at or above 7000FT.

RWY19R/19L : Climb direct to CHE VOR/DME, via CHE R185 to TOBBY.  
Cross CHE R185/27DME at or below 11000FT.

Note : Aircraft unable to comply with the flight restriction, inform ATC for alternate procedure before departure.



CHANGE : Description of PROC name.