

KEY WEST, FLORIDA

# VOR/DME RWY 26

EYW VORTAC <b>113.5</b> Chan <b>82</b>	APCH CRS <b>270°</b>	Rwy ldg <b>10,001</b> TDZE <b>6</b> Arprt Elev <b>6</b>
--	-------------------------	---

[USN]

KEY WEST NAS (BOCA CHICA FLD) (KNQX)

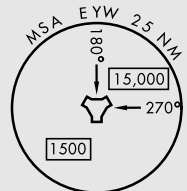
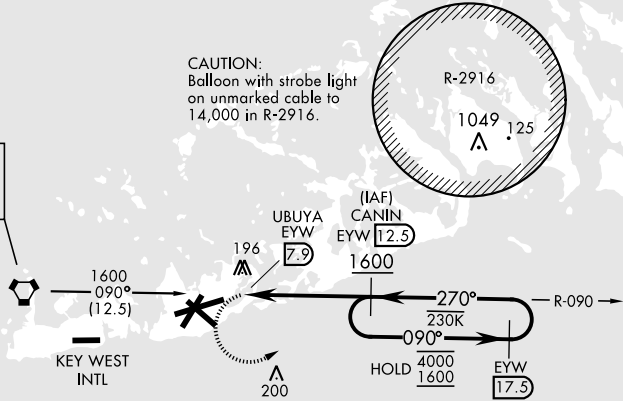
RADAR required

MISSED APPROACH: Climb to 500, then climbing left turn to 1600 to intercept EYW VORTAC R-090 to CANIN and hold.

ATIS ★ <b>307.025</b>	NAVY KEY WEST APP CON <b>124.025 313.7</b>	NAVY KEY WEST TOWER ★ <b>118.575 340.25</b>	GND CON <b>121.7 336.45</b>	CLNC DEL <b>121.2 357.4</b>	ASR/PAR
--------------------------	---	--	--------------------------------	--------------------------------	---------

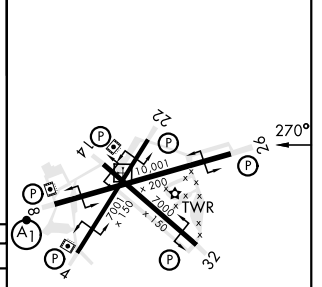
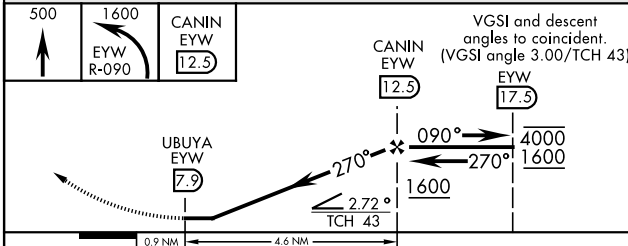
CAUTION: Final approach course crosses the extended runway centerline 5018' from threshold.

KEY WEST  
113.5 EYW Chan 82



EMEG SAFE ALT 100 NM 15,000

ELEV	6	TDZE	6
------	---	------	---



CATEGORY	A		B		C		D	
S-26	460-1	454 (500-1)	460-1 1/8	454 (500-1 1/8)	460-1 1/8	454 (500-1 1/8)	560-2	554 (600-2)
CIRCLING	460-1 454 (500-1)	500-1 494 (500-1)	500-1 1/2 494 (500-1 1/2)	500-1 1/2 494 (500-1 1/2)	560-2 554 (600-2)	560-2 554 (600-2)		

HIRL all rwys

KEY WEST, FLORIDA  
Amdt 4 23FEB23

24°34'N-81°41'W

KEY WEST NAS (BOCA CHICA FLD) (KNQX)

# VOR/DME RWY 26

SE-3, 20 MAR 2025 to 17 APR 2025

SE-3, 20 MAR 2025 to 17 APR 2025