

CARTA DE LLEGADA
VUELO POR INSTRUMENTOS - DESCENSO CONTINUO (CDA)-MIPS

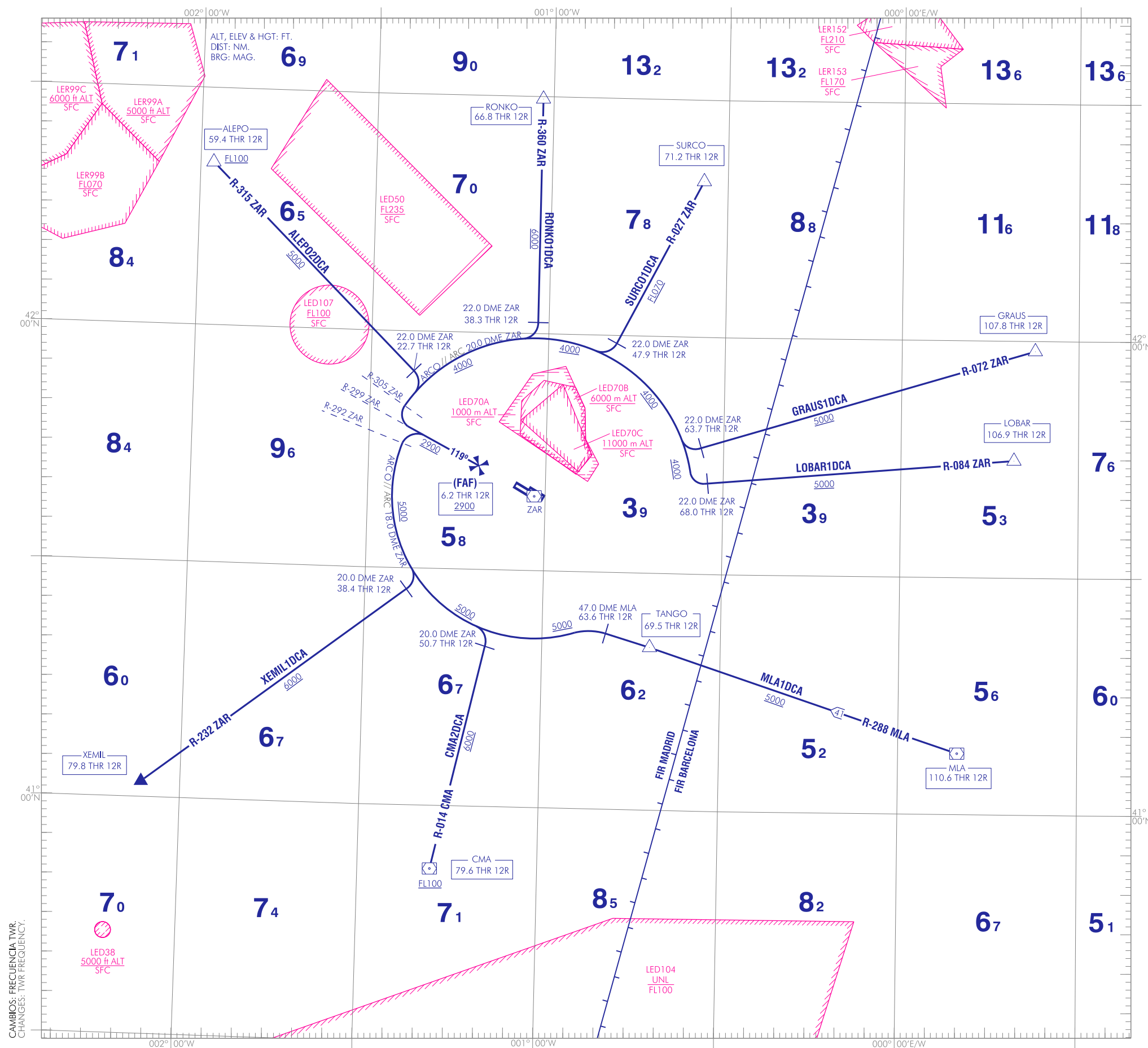
TA 6000

VAR 0° (2020)

APP 119.305 C
296.750 MHz

TWR 122.105 C
292.200 MHz

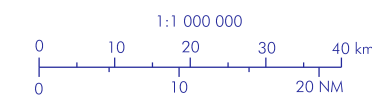
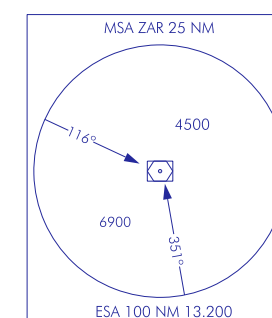
ALEPO2DCA LOBAR1DCA SURCO1DCA
CMA2DCA MLA1DCA XEMIL1DCA
GRAUS1DCA RONKO1DCA



CARTA BAJO AUTORIZACIÓN ATC
CHART UNDER ATC CLEARANCE

APROXIMACIÓN FINAL: VOR RWY 12R
FINAL APPROACH: VOR RWY 12R

HORARIO DE OPERACIÓN DEL PROCEDIMIENTO:
PROCEDURE OPERATIONAL HOURS:
V: 15:00-05:00; I: 16:00-06:00



INTENCIONADAMENTE EN BLANCO
INTENTIONALLY BLANK

ZARAGOZA AD

| COORDENADAS WAYPOINTS // WAYPOINTS COORDINATES | |
|--|------------------|
| WPT | COORD |
| ALEPO | 422037N 0015748W |
| CMA VOR/DME | 405202N 0011753W |
| FAF | 414350N 0011208W |
| GRAUS | 415845N 0002235E |
| LOBAR | 414453N 0001906E |
| MLA DVOR/DME | 410747N 0000956E |
| RONKO | 422945N 0010150W |
| SURCO | 421944N 0003405W |
| TANGO | 412038N 0004154W |
| XEMIL | 410200N 0020631W |
| ZAR VOR/DME | 413928N 0010151W |

LLEGADAS POR INSTRUMENTOS - DESCENSO CONTINUO (CDA) - MIPS

HORARIO DE OPERACIÓN DEL PROCEDIMIENTO:
V: 15:00-05:00; I: 16:00-06:00.

NOTA: CARTA BAJO AUTORIZACIÓN ATC.

➔ **PISTA 12R**

LLEGADA ALEPO DOS DELTA CHARLIE ALPHA (ALEPO2DCA).
Sujeta a la actividad de la LED107
ALEPO, R-315 ZAR/22.0 DME ZAR, ARCO 20.0 DME ZAR, R-305 ZAR/ARCO 20.0 DME ZAR, R-299 ZAR, (FAF).

LLEGADA CALAMOCHA DOS DELTA CHARLIE ALPHA (CMA2DCA)
VOR/DME CMA, R-014 CMA/20.0 DME ZAR, ARCO 18.0 DME ZAR, R-292 ZAR/ ARCO 18.0 DME ZAR, R-299 ZAR, (FAF).

LLEGADA GRAUS UNO DELTA CHARLIE ALPHA (GRAUS1DCA)
GRAUS, R-072 ZAR/22.0 DME ZAR, ARCO 20.0 DME ZAR, R-305 ZAR/ARCO 20.0 DME ZAR, R-299 ZAR, (FAF).

LLEGADA LOBAR UNO DELTA CHARLIE ALPHA (LOBAR1DCA)
LOBAR, R-084 ZAR/22.0 DME ZAR, ARCO 20.0 DME ZAR, R-305 ZAR/ARCO 20.0 DME ZAR, R-299 ZAR, (FAF).

LLEGADA MAELLA UNO DELTA CHARLIE ALPHA (MLA1DCA)
DVOR/DME MLA, R-288 MLA, TANGO, R-288 MLA/47.0 DME MLA, ARCO 18.0 DME ZAR, R-292 ZAR/ARCO 18.0 DME ZAR, R-299 ZAR, (FAF).

LLEGADA RONKO UNO DELTA CHARLIE ALPHA (RONKO1DCA)
RONKO, R-360 ZAR/22.0 DME ZAR, ARCO 20.0 DME ZAR, R-305 ZAR/ARCO 20.0 DME ZAR, R-299 ZAR, (FAF).

LLEGADA SURCO UNO DELTA CHARLIE ALPHA (SURCO1DCA)
SURCO, R-027 ZAR/22.0 DME ZAR, ARCO 20.0 DME ZAR, R-305 ZAR/ARCO 20.0 DME ZAR, R-299 ZAR, (FAF).

LLEGADA XEMIL UNO DELTA CHARLIE ALPHA (XEMIL1DCA)
XEMIL, R-232 ZAR/20.0 DME ZAR, ARCO 18.0 DME ZAR, R-292 ZAR/ARCO 18.0 DME ZAR, R-299 ZAR, (FAF).

INSTRUMENT ARRIVALS - CONTINUOUS DESCENT (CDA) - MIPS

PROCEDURE HOURS OF OPERATION:
V: 15:00-05:00; I: 16:00-06:00.

NOTE: CHART UNDER ATC CLEARANCE.

RUNWAY 12R

ALEPO TWO DELTA CHARLIE ALPHA ARRIVAL (ALEPO2DCA).
Subject to LED107activity
ALEPO, R-315 ZAR/22.0 DME ZAR, ARC 20.0 DME ZAR, R-305 ZAR/ARC 20.0 DME ZAR, R-299 ZAR, (FAF).

CALAMOCHA TWO DELTA CHARLIE ALPHA ARRIVAL (CMA2DCA)
VOR/DME CMA, R-014 CMA/20.0 DME ZAR, ARC 18.0 DME ZAR, R-292 ZAR/ARC 18.0 DME ZAR, R-299 ZAR, (FAF).

GRAUS ONE DELTA CHARLIE ALPHA ARRIVAL (GRAUS1DCA)
GRAUS, R-072 ZAR/22.0 DME ZAR, ARC 20.0 DME ZAR, R-305 ZAR/ARC 20.0 DME ZAR, R-299 ZAR, (FAF).

LOBAR ONE DELTA CHARLIE ALPHA ARRIVAL (LOBAR1DCA)
LOBAR, R-084 ZAR/22.0 DME ZAR, ARC 20.0 DME ZAR, R-305 ZAR/ARC 20.0 DME ZAR, R-299 ZAR, (FAF).

MAELLA ONE DELTA CHARLIE ALPHA ARRIVAL (MLA1DCA)
DVOR/DME MLA, R-288 MLA, TANGO, R-288 MLA/47.0 DME MLA, ARC 18.0 DME ZAR, R-292 ZAR/ARC 18.0 DME ZAR, R-299 ZAR, (FAF).

RONKO ONE DELTA CHARLIE ALPHA ARRIVAL (RONKO1DCA)
RONKO, R-360 ZAR/22.0 DME ZAR, ARC 20.0 DME ZAR, R-305 ZAR/ARC 20.0 DME ZAR, R-299 ZAR, (FAF).

SURCO ONE DELTA CHARLIE ALPHA ARRIVAL (SURCO1DCA)
SURCO, R-027 ZAR/22.0 DME ZAR, ARC 20.0 DME ZAR, R-305 ZAR/ARC 20.0 DME ZAR, R-299 ZAR, (FAF).

XEMIL ONE DELTA CHARLIE ALPHA ARRIVAL (XEMIL1DCA)
XEMIL, R-232 ZAR/20.0 DME ZAR, ARC 18.0 DME ZAR, R-292 ZAR/ARC 18.0 DME ZAR, R-299 ZAR, (FAF).

INTENCIONADAMENTE EN BLANCO
INTENTIONALLY BLANK