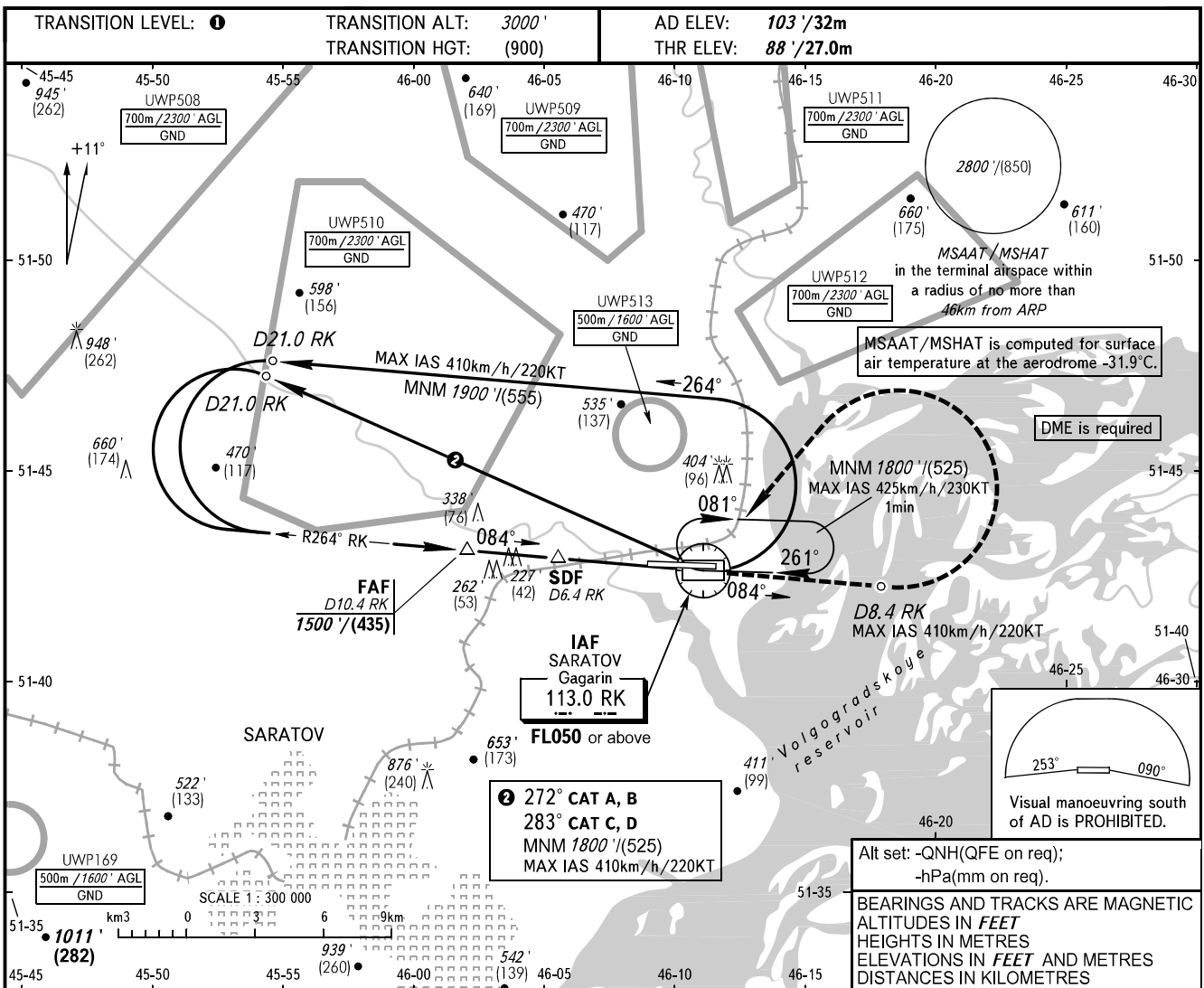


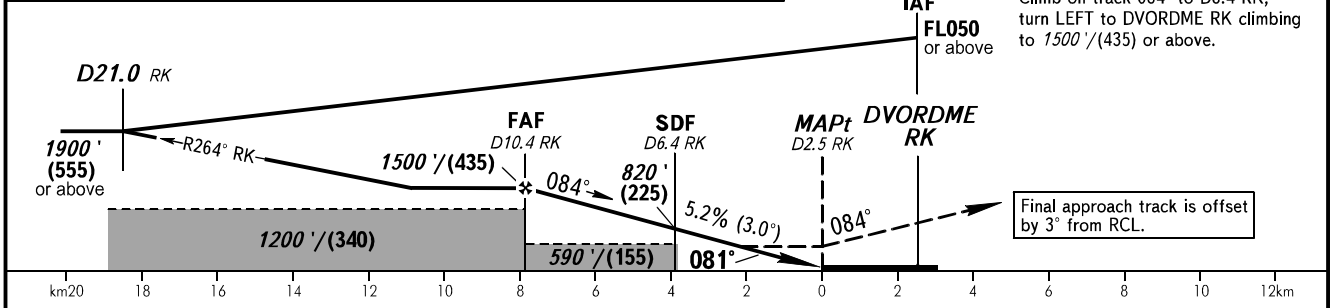
**INSTRUMENT
APPROACH
CHART - ICAO**

GAGARIN RADAR 130.300
GAGARIN TOWER 122.850

**SARATOV, RUSSIA
GAGARIN
DVOR RWY 08**



DME RK	10.0	8.0	6.0
ALTITUDE/HEIGHT	1426'/(408)	1085'/(304)	744'/(200)



OCA(H)		A	B	C	D
Straight-in Approach	With SDF	470' (380') (115)	470' (380') (115)	470' (380') (115)	470' (380') (115)
	WO SDF	520' (430') (130)	520' (430') (130)	520' (430') (130)	520' (430') (130)
Circling		650' (540') (165)	700' (600') (185)	1020' (920') (280)	1020' (920') (280)

1 TRANSITION LEVEL:
- FL040 when QNH is 1013 hPa (760mm mercury column) or above;
- FL050 when QNH is 977 hPa (733mm mercury column) or above, but less than 1013 hPa (760mm mercury column);
- FL060 when QNH is less than 977 hPa (733mm mercury column);

WARNING
MAPt at D2.5 RK. Timing not authorized for defining MAPt.

GROUND SPEED	km/h	150	180	210	240	270	300	330	360	390
	kt	81	97	113	130	146	162	178	194	211
RATE OF DESCENT	m/s	2.2	2.6	3.1	3.5	3.9	4.4	4.8	5.2	5.7
	ft/min	433	512	610	689	768	866	945	1024	1122

CHANGE: OCA(H), OBST