

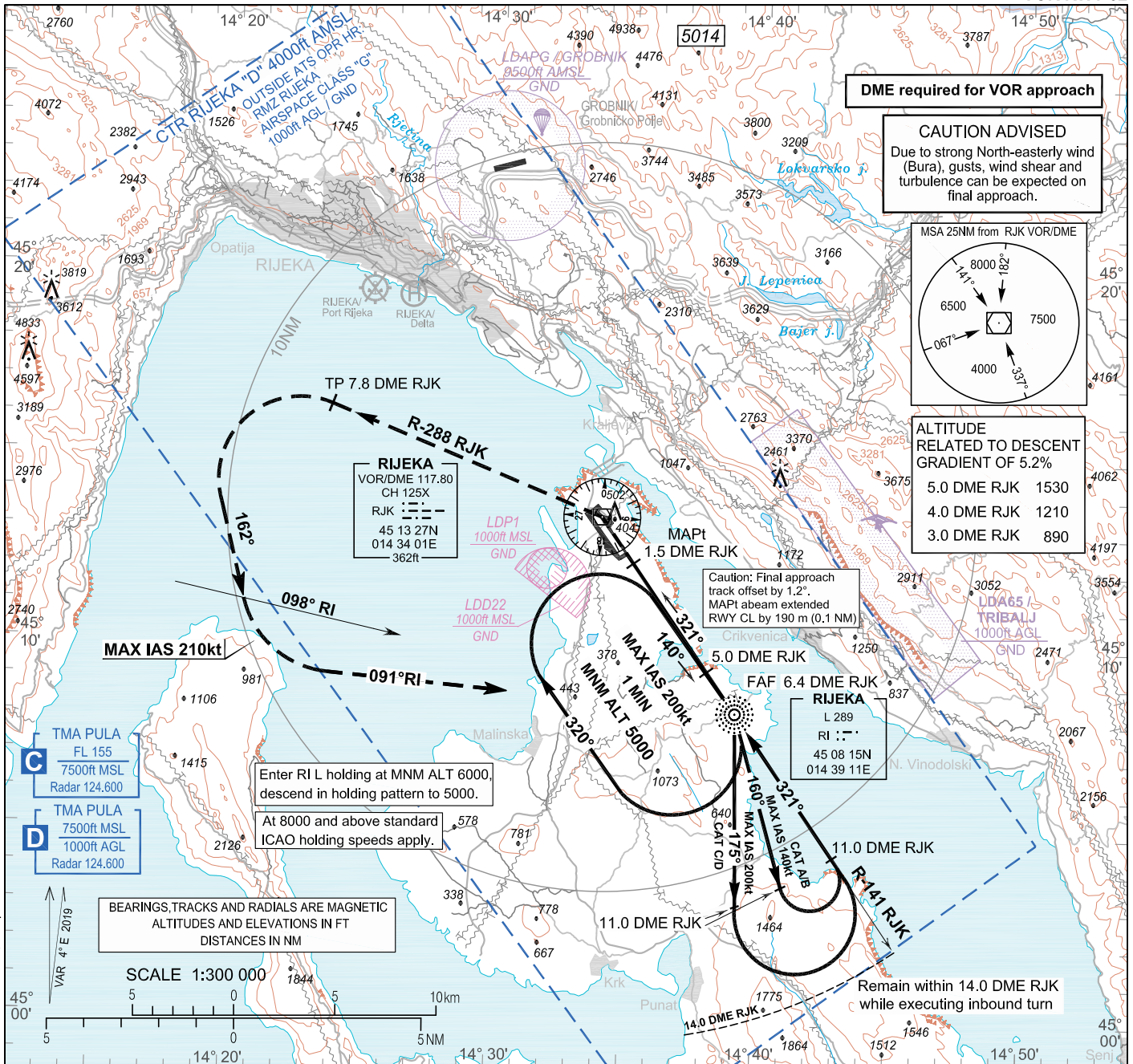
INSTRUMENT APPROACH
CHART-ICAO

AD ELEV 278
HEIGHTS RELATED
TO THR 32 ELEV 246

PULA RADAR	127.675
RIJEKA TOWER	119.000
	124.600

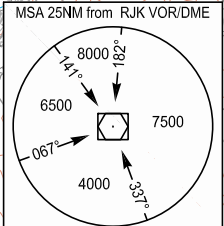
RIJEKA / Krk I. (LDRI)

VOR RWY 32



DME required for VOR approach

CAUTION ADVISED
Due to strong North-easterly wind (Bura), gusts, wind shear and turbulence can be expected on final approach.



ALTITUDE RELATED TO DESCENT GRADIENT OF 5.2%

5.0 DME RJK	1530
4.0 DME RJK	1210
3.0 DME RJK	890

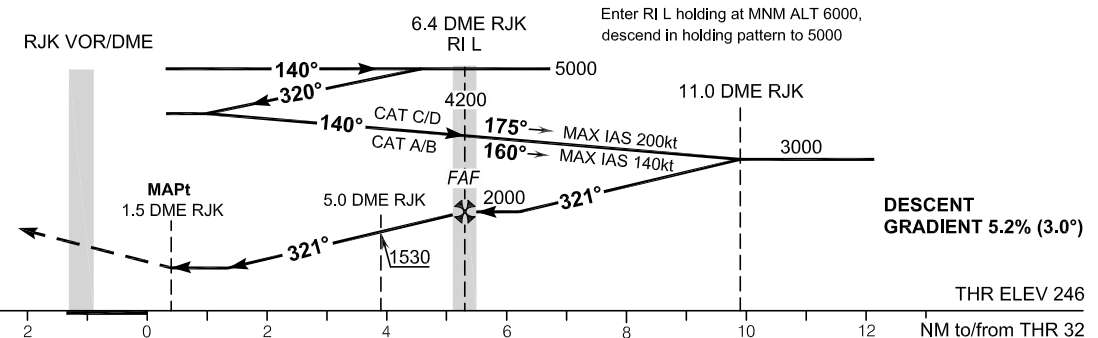
Caution: Final approach track offset by 1.2°. MAPt abeam extended RWY CL by 190 m (0.1 NM)

Enter RI L holding at MNM ALT 6000, descend in holding pattern to 5000.
At 8000 and above standard ICAO holding speeds apply.

Remain within 14.0 DME RJK while executing inbound turn

TRANSITION ALT 10 000

MISSED APPROACH:
Climb straight ahead.
At RJK VOR/DME turn LEFT climbing on R-288 RJK.
Cross 7.8 DME RJK and turn LEFT climbing on track 162°. Cross QDM 098° RI and turn LEFT to intercept and follow QDM 091° RI to RI L climbing to 6000ft and hold. MAX IAS 210 kt during turns.



OCA (H)	A	B	C	D
Straight-in approach	820 (580)			
Circling	820 (550)	Circling for ACFT CAT A, SW of the aerodrome not allowed. Circling for ACFT CAT B, C and D not allowed.		

FAF to MAPt - 4.9 NM
TIMING NOT AUTHORIZED FOR DEFINING THE MAPt

GS (kt)	70	100	120	140	160	180
min : sec	4:12	2:56	2:27	2:06	1:50	1:38
Rate of descent (ft / min)	369	527	632	737	843	948

CHANGE: Glider activity zones LDA11 / ISTRAZONA 1 and LDA12 / ISTRAZONA 2 deleted; Heliport RIJEKA/Delta added.

RIJEKA / Krk I. (LDRI)

VOR RWY 32

AERONAUTICAL DATABASE REQUIREMENTS

Conventional procedure essential fixes/points

VOR RWY 32

Final approach descent angle: ⁽¹⁾ 3.00°

Fix identification	Coordinates	True bearing or ARC distance providing track	True bearing or distance providing intersection
IAF (RI L)	450815.04N 0143910.56E	-	-
SDF intermediate	450426.6N 0144256.6E	325.01° (RJK VOR)	11.00 DME RJK
FAF (RI L)	450815.04N 0143910.56E	325.01° (RJK VOR)	6.35 DME RJK
SDF	450921.4N 0143804.8E	325.01° (RJK VOR)	5.00 DME RJK
MAPt	451213.2N 0143514.3E	325.01° (RJK VOR)	1.50 DME RJK

⁽¹⁾ Descent point inside RI L cone (from RI L coordinate descent angle should read 3.08°).

CHANGE: Glider activity zones LDA11 / ISTRA ZONA 1 and LDA12 / ISTRA ZONA 2 deleted; Heliport RIJEKA/Delta added.